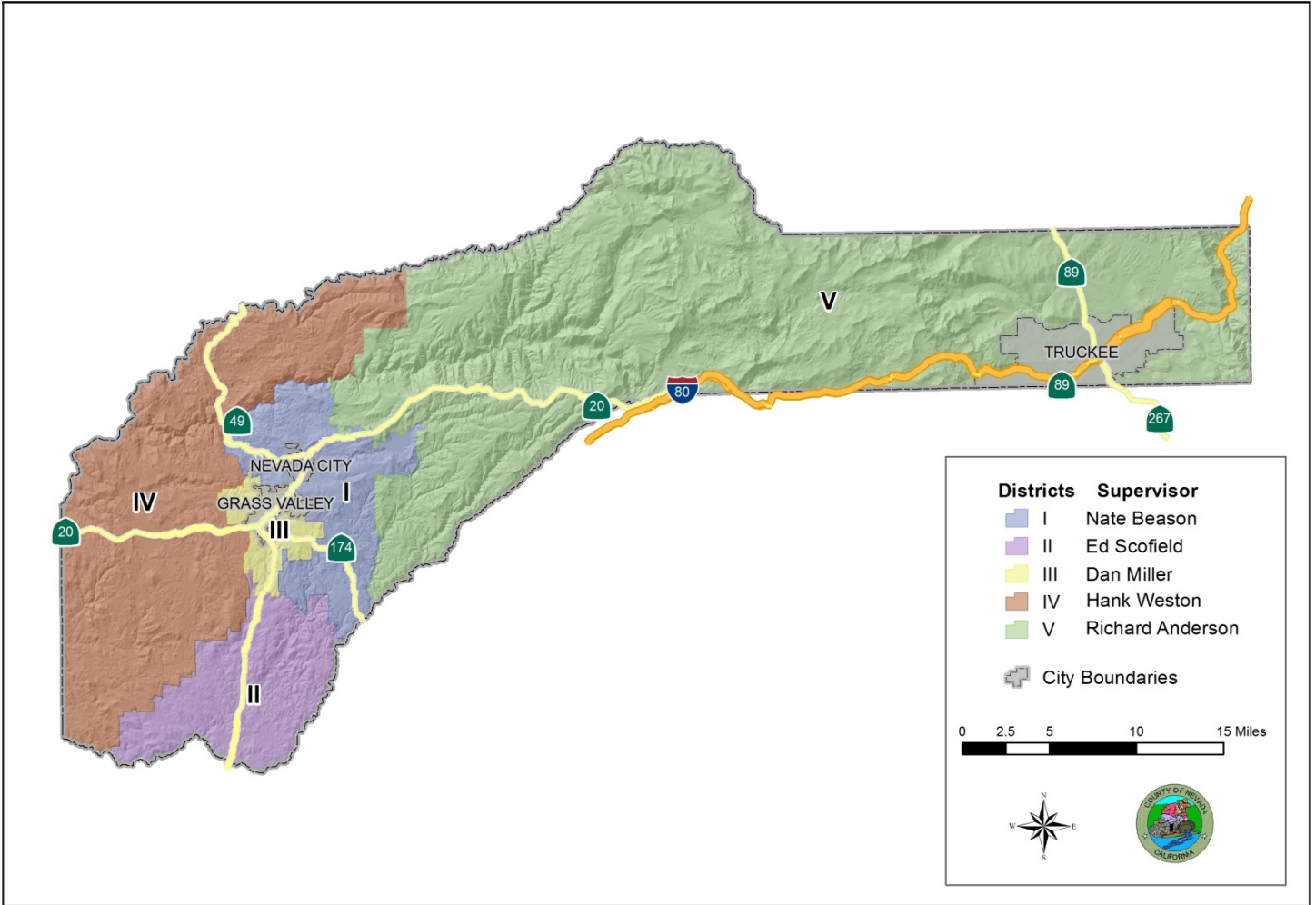


# NEVADA COUNTY, CALIFORNIA SUPERVISORIAL DISTRICTS



**District 1**  
*Nate Beason*

**District 2**  
*Ed Scofield*

**District 3**  
*Dan Miller*  
*Chair*

**District 4**  
*Hank Weston*

**District 5**  
*Richard Anderson*



GOVERNMENT FINANCE OFFICERS ASSOCIATION

*Distinguished  
Budget Presentation  
Award*

PRESENTED TO

**County of Nevada  
California**

For the Fiscal Year Beginning

**July 1, 2015**

Executive Director

The Government Finance Officers Association of the United States and Canada (GFOA) presented a Distinguished Budget Presentation Award to County of Nevada, California for the Annual Budget beginning July 01, 2015. In order to receive this award, a governmental unit must publish a budget document that meets program criteria as a policy document, as an operations guide, as a financial plan, and as a communications device.

# Table of Contents

<b>READER’S GUIDE</b>	<b>Page</b>
Reader’s Guide.....	IX

## SECTION 1 – EXECUTIVE SUMMARY

Message from the County Executive Officer.....	1-1
Key Accomplishments for 2015-2016.....	1-7
County Vision, Mission, Values .....	1-13
Board of Supervisors Objectives .....	1-15
Demographics & Statistical Profile .....	1-17
County Organizational Chart.....	1-41
Revenues by Source.....	1-42
General Fund Discretionary Revenues .....	1-43
Discretionary Revenue Per Capita.....	1-44
Expenditures by Cost Category .....	1-45
Expenditures by Function .....	1-46
General Government.....	1-47
Public Protection.....	1-48
Public Ways & Facilities .....	1-49
Health & Sanitation .....	1-50
Public Assistance .....	1-51
Education, Recreation & Culture.....	1-52
Enterprises .....	1-53
Internal Services .....	1-54
Historical Budget Trend .....	1-55
County Staffing Relative to Population Growth .....	1-56
Budget Summary by Fund .....	1-57
Changes in General Fund Balance.....	1-60

## SECTION 2 – BUDGET SUMMARIES BY OFFICE/AGENCY/DEPARTMENT

### Service Budget Unit

ASSESSOR	10201.....	2-1
AUDITOR/CONTROLLER	10202.....	2-7
BOARD OF SUPERVISORS	.....	2-15
□ Clerk of the Board	10101.....	2-18
□ Assessment Appeals Board	11001.....	2-22
CLERK-RECORDER	.....	2-25
□ Recorder	20701.....	2-28
□ Elections	10501.....	2-30
COMMUNITY DEVELOPMENT AGENCY	.....	2-35
□ CDA Administration	20707.....	2-40
□ Code Compliance	20709.....	2-42
AGRICULTURAL COMMISSIONER	.....	2-47
□ Agriculture Services	20601.....	2-50
□ Weights & Measures	20603.....	2-55
□ Fish & Wildlife	20705.....	2-56
FARM ADVISOR	60301.....	2-59



# Table of Contents

BUILDING INSPECTION	2-67
□ Building Inspection	20602.....2-70
□ Electrical Service Availability	30120.....2-74
ENVIRONMENTAL HEALTH	2-77
□ Environmental Health	40108.....2-80
□ Environmental Health Realignment	40120.....2-84
□ Vector Control	40123.....2-86
PLANNING	2-91
□ Planning	20708.....2-94
□ Recreation Mitigation Fees	70101.....2-100
PUBLIC WORKS	2-103
□ DPW Administration	30100.....2-106
□ Roads Administration	30101.....2-108
□ Roads – Engineering	30104.....2-110
□ Roads – Capital Improvements	30154.....2-114
□ Roads – Maintenance	30107.....2-118
□ Surveyor	11009.....2-120
□ Mitigation Funds	30102.....2-122
□ CSA / PRD	30103.....2-124
□ Fleet Services	92005.....2-126
□ Fleet Management	92001.....2-128
□ Transit Services	91003.....2-130
□ Transit Risk Management	11012.....2-134
□ Solid Waste Administration	40402.....2-136
□ Solid Waste – Western	91001.....2-138
□ Solid Waste – Eastern	91002.....2-140
□ Solid Waste – Oil	40401.....2-142
COUNTY COUNSEL	10301.....2-145
COUNTY EXECUTIVE OFFICE	10103.....2-153
DISTRICT ATTORNEY	2-161
□ District Attorney	20103.....2-164
□ Victim/Witness Assistance Center	50608.....2-166
□ 2011 Realignment PRCS/Parole	20116.....2-168
GRAND JURY	20102.....2-171
HUMAN RESOURCES	2-177
□ Personnel Services	10401.....2-180
□ Insurance – Benefits	92003.....2-184
HEALTH & HUMAN SERVICES AGENCY	2-187
□ Health & Human Services Admin	50101.....2-192
□ SB 163 California Wraparound	40140.....2-198
CHILD SUPPORT SERVICES	2-201
□ Child Support Services	20109.....2-204
□ Collections	10205.....2-208
DEPT. OF SOCIAL SERVICES	2-213
□ Social Services Admin	50102.....2-216
□ Adult Services Admin	50103.....2-220
□ In-Home Supportive Services	50206.....2-224
□ Child Welfare Services Admin	50104.....2-228



# Table of Contents

□ Child Welfare Services Assist	50204	2-235
□ Eligibility Services Admin	50105	2-236
□ Eligibility Services Assist	50205	2-241
□ Veterans Services	50501	2-242
□ Social Services Realignment	40118	2-246
□ Social Services 2011 Realignment	50207	2-248
BEHAVIORAL HEALTH		2-251
□ Behavioral Health Administration	40103	2-254
□ Children’s Behavioral Health	40104	2-260
□ Alcohol & Drug Programs	40105	2-264
□ Adult Behavioral Health	40110	2-268
□ Behavioral Health Realignment	40119	2-274
□ Behavioral Health 2011 Rlgn.	40130	2-276
PUBLIC HEALTH		2-279
□ Public Health Administration	40101	2-282
□ Health & Wellness	40102	2-286
□ Emergency Medical & Preparedness	40107	2-292
□ Public Health Client Services	40114	2-296
□ Public Health Realignment	40121	2-300
□ Health CCS Realignment	40129	2-302
HOUSING		2-305
□ Housing Services Administration	50601	2-308
□ Community Services	50602	2-312
□ Homebuyer Assistance	50604	2-316
□ Housing Development & Rehab	50605	2-318
□ Economic Development	10902	2-322
INFORMATION & GENERAL SERVICES		2-325
□ IGS Administration	11003	2-328
□ Information Systems	11007	2-330
□ Geographic Information Systems	11008	2-334
□ Cable TV Services	11010	2-336
□ Purchasing	10204	2-338
□ Central Services	92004	2-340
□ Emergency Management	20702	2-342
□ Facilities Management	10702	2-344
□ Capital Facilities Projects	10801	2-346
□ Airport	91004	2-348
LIBRARY	60201	2-351
NON-DEPARTMENTAL SERVICES		2-359
□ Annual Audit Service	10102	2-362
□ Other Financing Sources & Uses	10206	2-364
□ Trial Court Funding	10207	2-366
□ WWE Escrow Account	10209	2-368
□ Comm Fac Dist No. 1990-1 WWE	10210	2-370
□ Provision for Contingency	10212	2-372
□ MVLFF License Fees	10213	2-374
□ Building Debt Financing	10214	2-376
□ Criminal Justice Temp Facility Const	10803	2-378
□ Historical Landmarks	11006	2-380



# Table of Contents

□ Other Debt Financing	11016.....	2-382
□ Conflict Indigent Defense	20111.....	2-384
□ Dispute Resolution Fund	20112.....	2-386
□ Public Safety Augmentation	20710.....	2-388
□ Conservation	60401.....	2-390
□ Risk Management Administration	11005.....	2-392
□ Insurance – Property & Casualty	11004.....	2-394
□ Insurance – Workers’ Compensation	11015.....	2-396
□ Insurance – General Liability	92002.....	2-398
PROBATION	.....	2-401
□ Probation	20320.....	2-404
□ Juvenile Hall	20310.....	2-408
□ Juvenile Hall Realignment	40122.....	2-410
□ 2011 Realignment – Adult PRCS	20114.....	2-412
□ 2011 Rlgn–Juv JusticeYOBG/Re-Entry	20118.....	2-414
□ 2011 Rlgn–Juv Justice/Prob LLESS	20203.....	2-416
PUBLIC DEFENDER	.....	2-419
□ Public Defender	20107.....	2-422
□ 2011 Rlgn – PD PRCS/Parole	20117.....	2-426
SHERIFF	.....	2-429
□ Sheriff Services	20201.....	2-434
□ Dispatch Services	20204.....	2-442
□ Truckee Operations	20304.....	2-446
□ Court Security	20101.....	2-448
□ Corrections	20301.....	2-450
□ Inmate Medical Services	20302.....	2-454
□ Animal Control	20704.....	2-456
□ 2011 Rlgn–Low Level Offender/Parole	20113.....	2-458
□ 2011 Rlgn–Trial Court Security	20115.....	2-460
□ 2011 Rlgn–Law Enforcement Activities	20202.....	2-462
TREASURER/TAX COLLECTOR	10203.....	2-465

## SECTION 3 – INDEPENDENT COUNTY AUTHORITIES

Finance Authority	93010.....	3-1
Sanitation District No. 1	.....	3-7
□ Sewage Collection & Disposal	91005.....	3-10
□ Sewer Assessment	91006.....	3-14

## SECTION 4 – COUNTY RESOURCES

Position Summary Schedule .....	4-1
Capital Asset Expenditures .....	4-9
History of General Fund Balance .....	4-10
Schedule of Long Term Debt.....	4-11
Schedule of Revenue & Expenditure by Service Budget Unit & Fund .....	4-12
Service Budget Units by Fund Type .....	4-21



# Table of Contents

---

---

## SECTION 5 – FINAL RESOLUTIONS

Introduction .....	5-1
Resolution Adjusting Reserves for FY 2015/16 .....	5-3
Resolution Adopting Final Budget Reserves for FY 2016/17 .....	5-5
Resolution Adopting Final Budget for FY 2016/17.....	5-7
Resolution Adopting Final Budget for Sanitation District 1 for FY 2016/17 .....	5-9
Resolution Confirming Agreement for Allocation of Proposition 172 Revenues .....	5-11
Resolution Authorizing Personnel Salaries for FY 2016/17.....	5-15
Resolution Authorizing Personnel Staffing for FY 2016/17 .....	5-105
Resolution Adopting Appropriations Limitation for FY 2016/17 .....	5-125

## SECTION 6 – APPENDICES

Introduction.....	6-1
Fund Balance Reserve Policy .....	6-3
Debt Management Policy.....	6-9
Glossary of Budget Terms .....	6-19



# Table of Contents

## ALPHABETICAL LISTING BY SERVICE BUDGET UNIT

SERVICE	SERVICE BUDGET UNIT	PAGE NO.
2011 Realignment – Adult PRCS	20114	2-412
2011 Realignment – PD PRCS/Parole	20117	2-426
2011 Realignment PRCS/Parole	20116	2-168
2011 Rlgn – Juv Justice/Probation LLESS	20203	2-416
2011 Rlgn – Juvenile Justice YOBG/Re-Entry	20118	2-414
2011 Rlgn – Law Enforcement Services	20202	2-462
2011 Rlgn – Low Level Offender/Parole	20113	2-458
2011 Rlgn – Trial Court Security	20115	2-460
Agricultural Services	20601	2-47
Adult Behavioral Health	40110	2-268
Adult Services Admin & Assistance	50103	2-220
Airport	91004	2-348
Alcohol & Drug Programs	40105	2-264
Animal Control	20704	2-456
Annual Audit Services	10102	2-362
Assessment Appeals Board	11001	2-22
Assessor	10201	2-1
Auditor/Controller	10202	2-7
Behavioral Health Administration	40103	2-251
Behavioral Health 2011 Realignment	40130	2-276
Behavioral Health Realignment	40119	2-274
Building Debt Financing	10214	2-376
Building Inspection	20602	2-67
Cable TV Services	11010	2-336
Capital Facilities Projects	10801	2-346
Central Services	92004	2-340
Child Support Services	20109	2-201
Child Welfare Services	50104/50204	2-228
Children’s Behavioral Health	40104	2-260
Clerk of the Board	10101	2-15
Code Compliance	20709	2-42
Collections	10205	2-208
Comm Fac Dist No. 1990-1 WWE	10210	2-370
Community Development Agency Admin	20707	2-35
Community Services	50602	2-312
Conflict Indigent Defense	20111	2-384
Conservation	60401	2-390
Corrections	20301	2-450





# Table of Contents

---

---

County Counsel	10301	2-145
County Executive Office	10103	2-153
Court Security	20101	2-448
Criminal Justice Temp Facility Construction	10803	2-378
CSA / PRD	30103	2-124
Dispatch Services	20204	2-442
Dispute Resolution Fund	20112	2-386
District Attorney	20103	2-161
DPW Administration	30100	2-103
Economic Development	10902	2-322
Elections	10501	2-30
Electrical Service Availability	30120	2-74
Eligibility Services	50105/50205	2-236
Emergency Management	20702	2-342
Emergency Medical & Preparedness	40107	2-292
Environmental Health	40108	2-77
Environmental Health Realignment	40120	2-84
Facilities Management	10702	2-344
Farm Advisor	60301	2-59
Finance Authority	93010	3-1
Fish & Wildlife	20705	2-56
Fleet Management	92001	2-128
Fleet Services	92005	2-126
Geographic Information Systems	11008	2-334
Grand Jury	20102	2-171
Health CCS Realignment	40129	2-302
Health & Wellness	40102	2-286
Historical Landmarks	11006	2-380
Homebuyer Assistance	50604	2-316
Housing Development & Rehabilitation	50605	2-318
Housing Services Administration	50601	2-305
Human Services Agency Administration	50101	2-187
IGS Administration	11003	2-325
Information Systems	11007	2-330
In-Home Supportive Services	50206	2-224
Inmate Medical Services	20302	2-454
Insurance – Benefits	92003	2-184
Insurance – General Liability	92002	2-398
Insurance – Property & Casualty	11004	2-394
Insurance – Worker’s Compensation	11015	2-396
Juvenile Hall	20310	2-408
Juvenile Hall Realignment	40122	2-410
Library	60201	2-351



# Table of Contents

---

---

Mitigation Funds	30102	2-122
MVLF License Fees	10213	2-374
Other Debt Financing	11016	2-382
Other Financing Sources & Uses	10206	2-364
Personnel Services	10401	2-177
Planning	20708	2-91
Probation	20320	2-401
Provision for Contingency	10212	2-372
Public Defender	20107	2-419
Public Health Administration	40101	2-279
Public Health Client Services	40114	2-296
Public Health Realignment	40121	2-300
Public Safety Augmentation	20710	2-388
Purchasing	10204	2-338
Recorder	20701	2-25
Recreation Mitigation Fees	70101	2-100
Risk Management Administration	11005	2-392
Roads Administration	30101	2-108
Roads – Capital Improvements	30154	2-114
Roads – Engineering	30104	2-110
Roads – Maintenance	30107	2-118
SB 163 California Wraparound Program	40140	2-198
Sewage Collection & Disposal	91005	3-10
Sewer Assessment	91006	3-14
Sheriff Services	20201	2-429
Social Services Administration	50102	2-213
Social Services 2011 Realignment	50207	2-248
Social Services Realignment	40118	2-246
Solid Waste Administration	40402	2-136
Solid Waste – Eastern	91002	2-140
Solid Waste – Oil	40401	2-142
Solid Waste – Western	91001	2-138
Surveyor	11009	2-120
Transit Risk Management	11012	2-134
Transit Services	91003	2-130
Treasurer/Tax Collector	10203	2-465
Trial Court Funding	10207	2-366
Truckee Operations	20304	2-446
Vector Control	40123	2-86
Veterans Services	50501	2-242
Victim/Witness	50608	2-166
Weights & Measure	20603	2-55
WWE Escrow Account	10209	2-368

