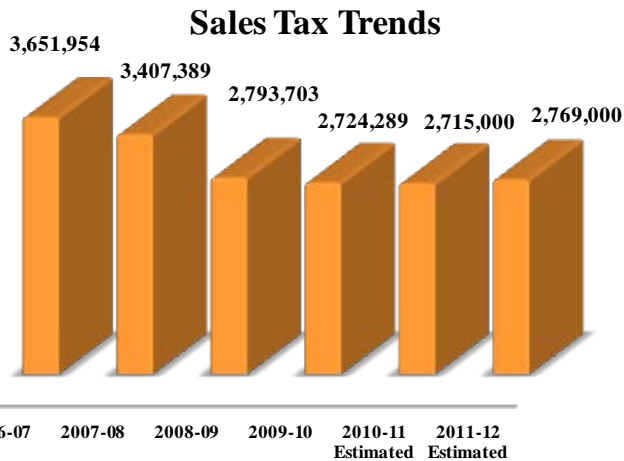


Message from the County Executive Officer

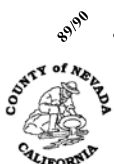
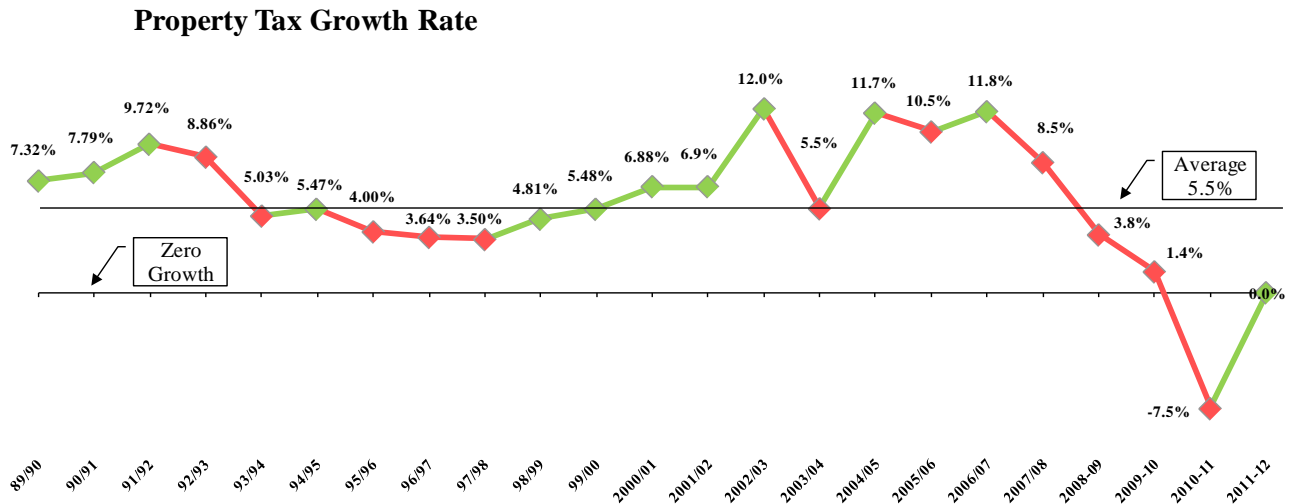
Bouncing Along the Bottom

As many people know, traditionally local governments track about 18 to 24 months behind a recovery from a national recession. Clearly, this downturn, the Great Recession, has been longer and deeper than previous economic declines and unlike anything since the 1930's. It appears we are now bouncing along the bottom of this deep trough and will not see the light until at least 2014-2015 if not even later. The question is will we begin an upturn or will there be a double dip and further decline in the economy locally, regionally and nationally.

The evidence so far is mixed at best. On the positive side, there has been a halt in the decline and a very modest return of sales tax locally and statewide. Below is a chart of the local trend for the last five years and the projected sales tax revenue for this upcoming fiscal year:



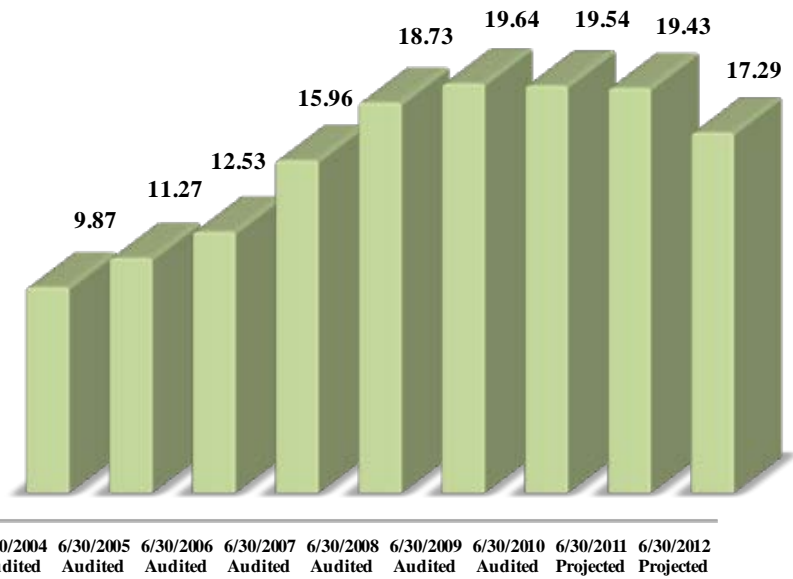
While sales tax is showing a very mild uptick, real estate is still struggling here in Nevada County and in many parts of the state and nation. Property taxes are the County's number one source of revenue for the general fund. They have averaged a 5.5% increase during the past 2 decades. The chart that follows shows a 20 year trend of property taxes. This chart highlights the extraordinary decline of property taxes over the last few years and our projected zero growth in property taxes for the fiscal year beginning July 1, which is an uptick from the negative growth this year:



Message from the County Executive Officer

The good news is that during the prosperous years of the last decade, your Board of Supervisors made a budget policy decision to set aside general fund reserves for one time expenditures and fiscal emergencies. While other local governments dipped into their reserves at the first sign of the downturn, the County of Nevada resisted doing so and began to trim expenditures while maintaining the fund balances in the County's reserves. As you can see in the chart below, these balances stood at \$19.4 million last year. For the first time since the recession began reserves will be tapped not just for one time expenditures, but to sustain basic operations for core services:

General Fund Balance

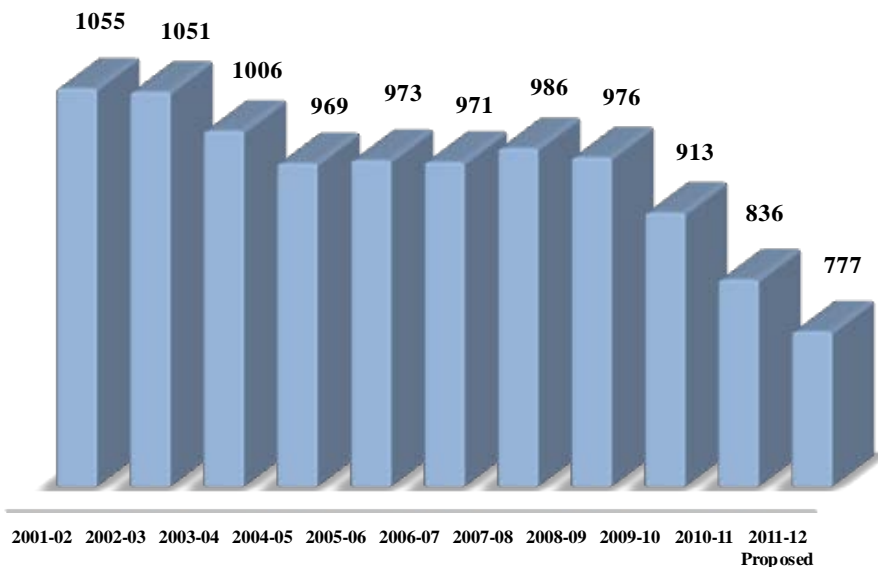


To meet these challenging trends, in January of this year, the Board of Supervisors authorized a fiscal strategy that includes three key components. They are:

- 1) For the first time, use fund balance from the reserves set aside
- 2) Make the necessary staffing reductions where possible
- 3) Seek reasonable labor contract amendments from our employee groups

The budget proposed for the fiscal year implements all three of these elements. Staffing levels which were not allowed to grow except in public safety during the strong economic years, have been substantially trimmed as evidenced by this chart:

County Staff



The third component was a major initiative this past year as a County Senior Executive team consisting of **Gayle Satchwell** and **Alison Lehman** met with all formal and informal employee groups to discuss the employees' assistance in solving this severe revenue decline. This team along with employees they met with was able to hammer out fair contract amendments that provided the following:

- 1) Accepting no net increases for multiple years
- 2) Spreading previous agreed salary increases to out years
- 3) Reducing pension costs through increased contributions by all employees and a new lower retirement formula for new employees



Message from the County Executive Officer

All but one of the employee groups agreed to these types of amendments. This was a selfless act by these groups which did not have to agree to any amendments, but did so to help save jobs for the good of the organization and community.

In addition, the Sheriff's Office has been a leader in making staff reductions by holding vacancies for position elimination. Under the leadership of **Sheriff Keith Royal**, his office has found ways to continue to provide a high level of service with minimal disruption to the public and still provide savings. His office has set an example for others in public safety to follow.

The County of Nevada is not just a provider of municipal services like the cities, but it's also an arm of the state. This requires counties to provide criminal justice and health and human service safety net programs that cities are not required to provide. It is because the State of California has struggled over the last decade (in prosperous times as well during this recession) with its own budget problems that California counties find themselves with a very unreliable partner in providing these services. As of the Governor's May Revise, no clear cut end to the State's budget struggles is apparent.

The County of Nevada has had to cut services in some important areas like CalWORKs Employment and Training, Child Welfare, Public Health and other human services because state funding has dried up. These cuts may go deeper if the state continues to struggle with its fiscal mess.

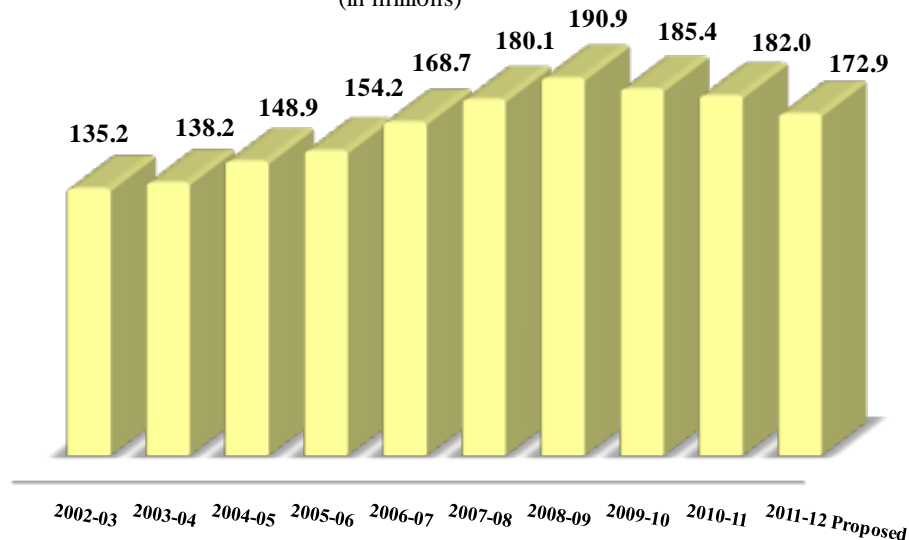
Our Health and Human Services Agency (HHS) has been very creative in maintaining many of their services. The strategy by the Agency has been a collaborative with community partners and strategic non-profit providers which continue to provide a backbone of safety net programs. The HHS leadership team has also set an example for moving forward in these tough times maintaining a safety net for those most in need.

The Community Development Agency and Information and General Services Agency have streamlined their administration and operations. This has allowed for lower staffing while still maintaining core services.

All of these factors have contributed to a smaller overall budget for the County of Nevada as you can see in the chart below:

County Budget

(in millions)



This budget could not have been accomplished without the many fine employees in this organization including some very high performing fiscal personnel. I would like to thank all of those involved, and in particular, the Board of Supervisors Ad Hoc Budget Subcommittee consisting of **Ed Scofield** and **Ted Owens** for their many days and long hours of reviewing budgets.

Lastly I would like to recognize the 7 specific employee groups out of a total of 8 formal and informal employee organizations who greatly contributed to the success of this budget by foregoing salary increases and other contributions including:

- 1) County Department Heads and Elected Officials (third year in a row)
- 2) Confidential Employees (second year in a row)



Message from the County Executive Officer

- 3) Sheriffs Management Association (4 year agreement)
- 4) Deputy Sheriffs Association (5 year agreement)
- 5) Management Employees Association (second year in a row & 3 year agreement)
- 6) Dep. District Attorney & Dep. Public Defender Association (4 year agreement)
- 7) Probation Peace Officers Association (3 year agreement)

Without the collaboration and sacrifices of these employees, the county budget would have been much, much more difficult to propose. These groups saved approximately \$1 million in just the first year of these agreements. On behalf of the County of Nevada thank you for your service and commitment to the betterment of the organization and our community.

Respectfully submitted,



Richard A. Haffey
County Executive Officer



Key Accomplishments for FY 2010-2011

The following are highlights of Nevada County's key accomplishments for fiscal year 2010/11 in the areas of: customer service, efficiencies, community collaboration, leadership, projects, grants, and recognition.

Customer Service:

Nevada County values adopted by the Board of Supervisors identify customer satisfaction as a high priority. The County continues to strengthen its customer service focus by looking for opportunities to improve customer service. Below are some of the customer service areas the County focused on last year:

- Created "It's In Your Hands Now", a 22 minute DVD to educate parents entering the child welfare system.
- The library worked with 21 other libraries in the NorthNet Library System to deliver downloadable audio and e-books free to library cardholders through OverDrive's LibraryToGo.
- Facilitated access to locally grown fresh fruits and vegetables for CalFresh public assistance clients through the Nevada City Farmers Market.
- Began a pest detection trapping program to protect county agriculture from the European Grapevine Moth.
- The Treasurer-Tax Collector's Office and the Elections Office partnered to use the ballot drop as a tax payment drop box also.
- Implemented broadcasting and streaming of Planning Commission meetings.
- Created a new Veterans support center with computers, phones, and faxes to give veterans access to research and community resources.
- Introduced a literacy program, offering free books to children in the Social Services office.
- Collaboration by Child Support Services, Courts and One-Stop Business and Career Center resulted in employment of 47% of Child Support parents.
- Transit and Social Services translated the Gold Country Stage Rider's Guide into Spanish.
- The Administrative Citation Ordinance was passed resulting in the issuance of administrative citations for non-compliance instead of criminal citations.

Efficiencies:

Nevada County continues to look for efficiencies in providing service. Some realized in fiscal year 2010/11 were:

- Recombined the Transportation and Sanitation departments under a single department.
- Planned moves of Department of Public Works and Child Support Services in the Eric Rood Administration Center, reducing the County's total building and rental expense.
- Contracted the McCourtney Road Transfer Station facility operations to a private company.
- Contracted with the Consolidated Area Housing Authority of Sutter County to perform services of the Nevada County Housing Authority.
- New Jail Management System software is accessible by other law enforcement agencies.
- Server virtualization over the past two years has saved 4 tons of air conditioning and the cost of replacing 70 physical servers, and has reduced electrical usage by approximately 20%.
- Negotiated contracts for multi-function office machines, off-site printing services and copy paper, expected to save \$118,000 per year.
- Implemented electronic file sharing between Probation and the District Attorney's office.
- Collections implemented an auto-dialer for delinquent payer reminders.
- Completed Behavioral Health's Electronic Health Record billing system implementation; implemented Public Health's eClinicalWorks electronic medical record system, and continued implementation of Social Services' eligibility case management system.

Community Collaboration:

Nevada County continues to partner with cities, towns and local businesses in the ongoing commitment to "Our Community." In fiscal year 2010/11, local collaboration included:

- Transit Services, Telecare, Nevada County Consolidated Fire, and Nevada City Fire implemented a joint emergency mobilization and evacuation exercise.
- Nevada County Recycles, Grass Valley Police Department, Community Recovery Resources, and Kmart Pharmacy created a drop-off for



Key Accomplishments for FY 2010-2011

- sharps, prescription and over-the-counter drugs, to keep them out of the waste stream and water.
- Planned and executed a full Emergency Operations Center activation in a Cal EMA sponsored exercise measuring Nevada County's response to a major flood event.
- Provided Eligibility Services and outreach in rural isolated areas, at Sierra Nevada Memorial Hospital, Hospitality House and Progress House Substance Abuse Treatment Center, and by using video-conferencing equipment and Skype at selected sites. Partially funded by a grant from the Northern Sierra Air Quality Management District, the video conferencing is an ongoing partnership with the Rural Health Network, Sierra Family Clinic, Miners Clinic, and Community Recovery Resources.
- Partnered with the Nevada County Superintendent of Schools on their Safe Schools, Healthy Students grant to fund three Nevada County Behavioral Health children's therapists in the schools for four years; treated 74 children.
- Merged our Homeless Continuum of Care with Placer County's, creating a regional entity to better access funding and serve the homeless.
- Partnered with the Aging and Disabilities Resource Connection to provide comprehensive Information and Assistance, Options Counseling and No Wrong Door Services to seniors and people with disabilities in our community.
- Collaborated with the Tahoe Truckee Unified School District and Nevada Joint Union High School District to create a Teen Suicide Prevention Program.

Leadership:

The County's Mission statement adopted by the Board of Supervisors states, "To work with the community to develop sound and innovative public policy, provide strong leadership and deliver excellent services in a fiscally responsible manner". Leadership is an important role for Nevada County as the largest employer in the County. Key Leadership accomplishments for fiscal year 2010/11 include:

- Completed amendments to the County Land Use and Development Code Section L-XVII 3.4(M) addressing Gates on Access Roads and the Nevada County Pipe Gate Standard Drawing.

- Provided operational stability for the County through the Vacancy Review process, looking for reorganization opportunities and staffing adjustments as workloads and funding decline.
- Finalized modified labor agreements with the Deputy Sheriffs' Association, Sheriff's Management Association, Attorney Association, Management Association, and Probation Peace Officers' Association to extend contracts including raise deferrals and other mitigations to the fiscal year 11/12 budget impacts.
- Over 70% of clients involved in a Nevada County Drug Court successfully completed recovery programs, compared to the statewide successful program completion rate of 34%.
- Coordinated training for emergency first responders and medical staff on radioactive waste incidents after the DOE began low-risk shipments on I-80 through Nevada County.
- Provided training to the Nevada County Contractors' Association on the new California Green Building Code.
- Became one of 14 California counties designated "StormReady," through a nationwide program to help communities better protect citizens during severe weather.
- Public Health instituted a quarterly newsletter, *Epidemiology & Disease Control*, updating local medical providers on issues related to communicable and vaccine preventable diseases.
- Assisted the Board's economic development efforts by guiding and coordinating the countywide marketing plan, website and logo design; redesign of MyNevadaCounty.com; and launch of the GoNevadaCounty.com tourism site including video tours of Nevada County.
- Completed an update of the Nevada County General Plan Housing Element.

Projects:

Listed below are a few Infrastructure and Capital Facility key projects Nevada County achieved in 2010/11 in support of our Board of Supervisor's objectives:

- Prepared 12.73 miles of roads for overlay.
- Pavement overlays on 12.73 miles.
- Prepared and chip sealed 23 miles of road.



Key Accomplishments for FY 2010-2011

- Widened, prepared and double chip sealed 0.66 miles of Willow Valley Road.
- Brushed 68.35 miles for Vegetation Control.
- *McCourtney Road Shoulder Improvements* - Federal funded project to widen shoulders from Indian Springs to approx 1 ½ miles south.
- *Wolf/Duggans Shoulder Improvements* - Federal funded project to widen shoulders on Wolf Road from Duggans Road west and on Duggans Road from Wolf Road to the School.
- *Magnolia Road Center Turn Lane* – Federal stimulus funded project to extend the center turn lane from Lake of the Pines to Bear River High School and construct a center turn lane for the Cottage Hill Elementary School.
- *La Barr Meadows/Dog Bar Roads Shoulder Improvements* – Federal stimulus funded project to widen shoulders and related improvements at spot locations from Grass Valley City limits to Dog Bar Road.
- Airport began construction on eight Ramp 1 hangars.
- Completed energy retrofits at the Eric Rood Administrative Center (ERAC) and Wayne Brown Correctional Facility.
- Remodeled the Odyssey house.
- Completed the American Rivers water drainage project at the ERAC.
- Installed new ADA-compliant bus shelter and sidewalk connector at the Pleasant Valley Road bus stop in Penn Valley, using ARRA funding.
- Installed in-car cameras in Sheriff Department vehicles for the protection of deputies and citizens and reducing court time.
- Completed pipeline to connect DarkHorse to Lake of the Pines Wastewater Treatment plant and merged the DarkHorse treatment zone into Lake of the Pines.
- Remodeled Social Services department facilities.
- Community Service’s CSBG ARRA grant program resulted in the creation of 9 jobs, retention of 3 jobs and prepared 127 individuals for full time employment.
- ARRA funds provided subsidized employment to 208 eligible County residents at 80 private, non-profit or public worksites. 35 were permanently employed and four others continued as paid interns through the Private Industry Council.
- Received \$32,524 in Federal Library Service and Technology Act funds through the State Library to upgrade online catalog software.
- Upgraded public internet connectivity at the Penn Valley and Doris Foley Libraries with funding from the California State Library through the Bill and Melinda Gates Foundation Online Opportunity Grant.
- Friends of the Nevada County Libraries granted the library over \$55,000, including \$14,000 from the Ghidotti Foundation for Western Nevada County collections and children’s programming.
- The Nevada County Office of Emergency Services was awarded \$437,864 from the Department of Homeland Security for equipment and training to protect against terrorism and weapons of mass destruction.
- Received State grant funding of \$94,339 to provide fraud prevention programs to protect consumers in Adult Services Programs.
- Secured ongoing grant funding from the First 5 Commission to maintain Children’s Behavioral Health evening hours, shelter consultation and treating indigent children programs.
- CDA-Housing received additional \$519,000 DOE ARRA Weatherization Assistance Program funds. The program directly generated five local jobs and many more indirectly.
- Received a \$10,800 CDGB grant to improve the Town of Washington’s water system.

Grants:

We are proud of County staff’s efforts in competing for and obtaining grant funding. The following list highlights some of the major grant funding accomplishments for fiscal year 2010/11:

- The County applied for American Recovery and Reinvestment Act of 2009 (ARRA) grants and \$12,756,749 was approved. As of April 2011, \$10,517,463 has been received.

Recognition:

Nevada County has long been recognized as a leader in applying information systems business practices. Other counties look to us to provide best practice advice. Below are a few areas where we were recognized in fiscal year 2010/11:



Key Accomplishments for FY 2010-2011

- Received the Government Finance Officers Association's Certificate of Excellence in Financial Reporting for the third year in a row.
- Tied for third place in overall performance of California's 52 Local Child Support Agencies.
- Awarded second place in the nationwide Digital Counties competition.
- Behavioral Health received the California State Association of Counties' Challenge Award for Intensive Assisted Treatment Program.
- Received the California Counties Facilities Services Association's "Facilities Service Excellence Award."
- Public Health Department selected as a National Achieve Initiative Participant by the U.S. Center for Disease Control.
- Received California County Information Services Directors' Awards for Business Process Automation and Operational Effectiveness.
- One of ten communities nationwide selected to participate in Easter Seals Project Action for an Accessible Transportation Event.





COUNTY OF NEVADA, *California*

Vision, Mission, and Value Statements

Vision

We are dedicated to outstanding public service

Mission

To work with the community to develop sound and innovative public policy, provide strong leadership and deliver excellent services in a fiscally responsible manner

Value Statements

Customer Satisfaction - We tailor our products to meet the unique needs of our customers, not presuming that "one size fits all." To do so, we make every effort to understand what customers need and value.

Collaboration - We work together across divisions, departments, agencies, and jurisdictional boundaries with cities, districts and other governments to seamlessly serve our citizens/customers. We encourage others to utilize the products and services of our peers throughout the organization.

Open and Honest Communication – Communication is a dynamic and ongoing process. We communicate information frequently, accurately, and succinctly. We keep our supervisor and our co-workers informed. We listen and we provide feedback. We communicate only what we know.

Innovation - We proactively seek new opportunities to better serve our customers, and continually improve the way we do business to improve our efficiency and quality.

Integrity – Our organization and its processes must be ethically grounded. We strive for the success of our organization based on mutual trust and confidence. We are a team and we work together, respecting each individual's contribution and giving credit where it's due.

Personal Responsibility – We strive to do our very best in our jobs at all times. We take action when action is required. We don't wait to be told. Our actions provide an example for our co-workers.

Pride of Ownership – We are committed to the highest quality and professional excellence in our work. We always do the best we can. We proudly take ownership of what we produce.

Our Employees – We provide an environment in which our employees are challenged to do their very best. We provide continuous, positive feedback in the development of their skills and knowledge. We recognize good performance as part of our effort to empower our employees to do their best and seek additional responsibility.

Our Community - We help our community choose among our services and programs, by facilitating their understanding of which alternative best matches their values.

Trust – We keep our word. We don't make commitments we cannot keep. If a commitment is delayed or interrupted, we notify those affected. We don't surprise them.

Respect and Civility - We treat each other with mutual respect. We are civil and respectful even in disagreement. We offer criticism or feedback to others directly and in a positive manner that respects individual dignity. We welcome constructive feedback to ourselves as an opportunity for professional improvement.

We are accountable for our Vision, Mission and Values

*Nevada County Board of Supervisors
Resolution 11-067: Vision, Mission and Values*

Nevada County

CALIFORNIA

Community Data Summary

2011

DISTANCE TO MAJOR CITIES

FROM GRASS VALLEY/NEVADA CITY (Western Nevada County)

Sacramento	Southwest	57 miles
San Francisco	West	143 miles
Reno	Northeast	88 miles
South Lake Tahoe	Northeast	98 miles

FROM TRUCKEE (Eastern Nevada County)

Sacramento	Southwest	102 miles
San Francisco	West	188 miles
Reno	Northeast	31 miles
South Lake Tahoe	Southeast	45 miles

POPULATION

Year	Grass Valley	Nevada City	Truckee	Nevada County
1850	454	2,683	1,147	--
1900	4,719	3,250	--	17,789
1950	5,283	2,505	1,025	19,888
1980	6,697	2,431	2,389	51,645
1990	9,048	2,855	3,484	78,510
1995	9,250	2,820	11,300	85,900
1999	9,850	2,890	12,450	89,600
2000	10,922	2,996	13,864	92,033
2001*	11,858	3,025	14,224	93,357
2002*	11,957	3,031	14,682	94,871
2003*	12,050	3,038	14,890	96,159
2004*	12,224	3,034	15,220	97,397
2005*	12,944	3,037	15,578	98,464
2006*	12,929	3,063	15,784	99,260
2007*	12,947	3,065	15,939	99,265
2008*	12,891	3,065	16,113	98,874
2009*	12,809	3,042	16,230	98,649
2010*	12,746	3,040	16,280	98,680
2011*	12,860	3,068	16,180	98,764

*State of California, Department of Finance, E-4 Population Estimates for Cities, Counties and the State, 2001-2009, with 2000 Benchmark. Sacramento, California, April 2010.

DEMOGRAPHICS

HOUSING & CONSTRUCTION

Housing Stock	Apr-10	52,590
Vacancy Rate		21.00%

LAND AREA

Land Area in Acres	612,900
County Size in Square Mile	978
Streets, Road, & Highways, total miles	1,173

SINGLE FAMILY HOME PRICE

Median sales price	Mar-11	\$238,000
--------------------	--------	-----------

INCOME

Personal Income (\$mil.)	2009	\$4,447.3
Per Capita Income		\$45,708
Average Earnings per Job		\$39,782
Median Household Income		\$57,884

TRANSPORTATION

Total Registered Vehicles	Dec-10	128,393
---------------------------	--------	---------

TRANSPORTATION

Western Nevada County:

HIGHWAYS

Interstate 80
State Highways 49, 20, 174

RAIL

Bus connections to rail stations in Colfax, Auburn and Roseville from western Nevada County region.

AIR

Nevada County Airport, Grass Valley
Runway: 4,329 ft.
Elevation 3,150 ft
Air charter service is available.

BUS

Durham Transportation and Gold Country State serves Grass Valley, Nevada City and outlying areas.

Eastern Nevada County:

HIGHWAYS

Interstate 80
State Highways 89

RAIL

Amtrak in Truckee

AIR

Truckee-Tahoe Airport, Truckee
Runway 7,000 ft.
Elevation 5,900 ft
Air charter service is available.

BUS

Greyhound & Amtrak, Lake Tahoe Transit and various tour bus lines.

UTILITIES

Western Nevada County:

ELECTRIC POWER AND NATURAL GAS

PG & E (Pacific Gas & Electric)

TELEPHONE

Local: SBC

WATER

NID (Nevada Irrigation District)
Grass Valley Dept of Public Works
Nevada City Water Dept
Deer Creek Park Association
(Smaller districts and private mutual water companies provide water to very localized areas.)

SEWER

Nevada County Sanitation District
City of Grass Valley
City of Nevada City

Eastern Nevada County:

ELECTRIC POWER AND NATURAL GAS

Truckee-Donner Public Utility District
Sierra Pacific Power Company

TELEPHONE

Local: SBC & Rubicon Technology

WATER

Truckee-Donner Public Utility District
(Smaller districts and private mutual water companies provide water to very localized areas.)

SEWER

Truckee Sanitary District
Tahoe-Truckee Sanitary Agency
Donner-Summit Public Utility District

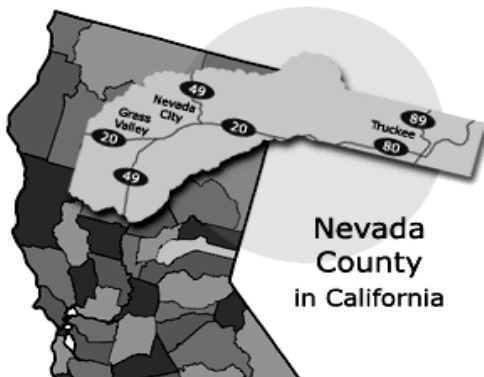
GOVERNMENT

COUNTY GOVERNMENT

Five (5) elected supervisors serve 4-year terms, appoint County Executive Officer.

CITY GOVERNMENT

Cities employ council / manager form of government.



LABOR FORCE

LABOR FORCE EMPLOYMENT	Apr-11
Civilian Labor Force	50,860
Civilian Employment	44,750
Civilian Unemployment	6,120
Civilian Unemployment Rate	12.0%
TOTAL All Industries	27,590
Total Farm	70
Total Non Farm	27,520
Goods Producing	3,420
Construction, Mining, Nat. Resource	1,740
Manufacturing	1,670
Service Providing	24,110
Trade, Transportation & Utilities	4,360
Information	340
Finance/Insurance/Real Estate	1,350
Professional & Business Services	2,360
Educational & Health Services	3,960
Leisure & Hospitality	4,620
Other Services	1,010
Government	6,120

INDUSTRY CLUSTERS

INDUSTRY SECTORS	Average Employment 2009	Avg Wage per Worker 2009
Goods Producing	4,211	51,424
Natural Resources and Mining	217	42,625
Construction	2,126	44,738
Manufacturing	1,867	60,088
Service Providing	18,410	33,351
Trade, Transportation & Utilities	4,621	30,594
Information	368	44,742
Financial Activities	1,350	46,523
Professional & Business Services	2,529	42,899
Education and Health Services	4,137	42,770
Leisure & Hospitality	4,115	17,875
Other	1,148	24,644
Unclassified	134	42,098
Government		
Federal	420	55,068
State	530	36,088
Local	5,180	48,048

EDUCATION

TAXES / COUNTY FINANCIALS

TAX RATES	
Sales Tax	8.375%
Nevada City and Truckee	8.875%
SALES TAX (\$ thousands)	2009
Total taxable sales	\$ 983.2
Taxable retail sales	\$ 682.6
AUDITED COUNTY FINANCIALS (\$mill.)	2009-10
TAX REVENUE (\$mill.)	
Total Tax Collections	\$ 41.9
Property Tax	\$ 34.2
Sales Tax	\$ 4.0
TOTAL REVENUE (\$mill.)	\$ 158.5
TOTAL EXPENDITURES (\$mill.)	\$ 149.8

PRIMARY SCHOOLS

2010-11

WESTERN NEVADA COUNTY

School Districts	11
Elementary & Middle Schools (including 7 charter)	26
Students	7,259
High Schools (including 1 alternate & 3 continuation)	9
Students	5,933
Private Schools K - 12	6
Students	727

EASTERN NEVADA COUNTY

School Districts	1
Elementary & Middle Schools	7
Students	2,775
High Schools (including 1 continuation)	3
Students	1,050
Alternative Schools (K-12)	1
Students	29

COLLEGES

Fall 10

WESTERN NEVADA COUNTY:

SIERRA COLLEGE, NEVADA COUNTY CAMPUS

Transfer, Vocational, Technical & Certificate
Programs and Associates Degrees

Student Enrollment	5,753
--------------------	-------

EASTERN NEVADA COUNTY:

SIERRA COLLEGE, TAHOE / TRUCKEE EXTENSION

Transfer, Vocational, Technical & Certificate
Programs and Associates Degrees

Student Enrollment	1,279
--------------------	-------

RECREATION

Western Nevada County:

Golf Courses (Public/Private)	4/3
Neighborhood Parks	7
Community Swimming Pools	2
Health Clubs	8
Mountain Bike Trails	100+
Hiking Trails	20
Boating and Fishing Lakes	20
Gold Panning River Locations	2
Whitewater Rivers Class II-IV	1

Eastern Nevada County:

Regional Ski and Snowboard - Downhill	14
Regional Ski Areas - Cross Country	10
Golf Courses (Public/Private)	3/5
State and Regional Parks	16
Community Swimming Pools	1
Health Clubs	3
Whitewater Rivers Class II-IV	1

Nevada County has abundant mountains, lakes, rivers and campgrounds, including 169,045 acres of Tahoe National Forest.

CULTURE AND COMMUNITY

Western Nevada County:

Clubs and Organizations	230
Churches	49
Museums & Historical Sites	10
Art Galleries	9
Performing Arts Organizations	20
Radio Stations	3
Libraries	5
Movie Theaters	4
Live Theaters	8
Shopping Centers	5
Hospitals/Beds	1/124
Doctors / Dentists	89/60
Nursing Homes	4
Hotel, Motel, Inns, B&B's	27

Eastern Nevada County:

Clubs and Organizations	27
Churches	29
Museums & Historical Sites	2
Art Galleries	6
Libraries	1
Hospitals/Beds	1/72
Doctors / Dentists	37/20
Nursing Homes	0
Hotel, Motel, Inns, B&B's	32

CLIMATE

Western Nevada County:

Annual Rainfall	54 inches		
Annual Snowfall:	Light snow, 5 time/year		
Temperatures	Low	High	
	Jan	31	52
	Apr	38	63
	Jul	54	88
	Oct	42	72

Elevation:

Grass Valley = 2,200 ft. Nevada City = 2,500 ft.

Eastern Nevada County:

Annual Rainfall	32 inches		
Annual Snowfall:	206 inches		
Temperatures	Low	High	
	Jan	15	39
	Apr	26	54
	Jul	42	82
	Oct	29	64

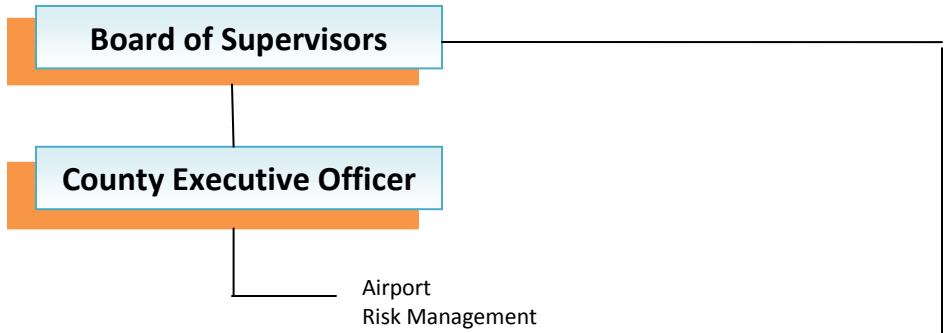
Elevation:

Truckee = 5,900 ft.

DIRECTORY

Business Assistance	Sierra Economic Development	530-823-4703	Community	Hospital, Grass Valley	530-274-6000
	Small Business Development Center	530-823-4230		Hospital, Truckee	530-587-6011
Economic Development	Economic Resource Council	530 274-8455		Superintendent of Schools	530 478-6400
Permits & Codes	City of Grass Valley	530 274-4310		Sierra College, NC Campus	530 274-5300
	City of Nevada City	530 265-2496	Nevada County Economic Resource Council		www.ncerc.org
	Town of Truckee	530 582-7700	California Department of Finance		www.dof.ca.gov
	Nevada County Tax Collector	530 265-1285	Employment Development Department		www.edd.ca.gov
	Nevada County Planning Dept	530 265-1222	County of Nevada		www.mynevadacounty.com
Business Organizations	GV / NC Chamber of Commerce	530 273-4667	Nevada County Superintendent of Schools		www.nevco.k12.ca.us
	Nevada City Chamber of Commerce	530 265-2692	Grass Valley / Nevada County Chamber		www.grassvalleychamber.com
	Truckee/Donner Chamber of Commerce	530 587-8808	Penn Valley Chamber of Commerce		www.pennvalleycoc.org
	Penn Valley Chamber of Commerce	530 432-1802	Rough & Ready Chamber of Commerce		www.roughandreadychamber.com
	Rough & Ready Chamber of Commerce	530 272-4320	Truckee Donner Chamber of Commerce		www.truckee.com
	So. Nevada County Chamber of Commerce	530 268-7622	Nevada City Chamber of Commerce		www.nevadacitychamber.com
	Nevada County Business Association	530 265-4959	So. Nevada County Chamber of Commerce		www.sncchamber.org
Residential Organizations	Board of Realtors	530 272-2627	Nevada County Gold Magazine		www.ncgold.com
	Housing and Community Services	530 265-1388	Nevada County Info, Links & Pictures		www.aboutnevadacounty.com
Transportation	Department of Motor Vehicles	800 777-0133	Nevada County, CA: Explore-Connect-Play		www.gonevadacounty.com
	Nevada County Airport	530 273-3374			
	Truckee Tahoe Airport	530 587-4119			

Nevada County Government Organization

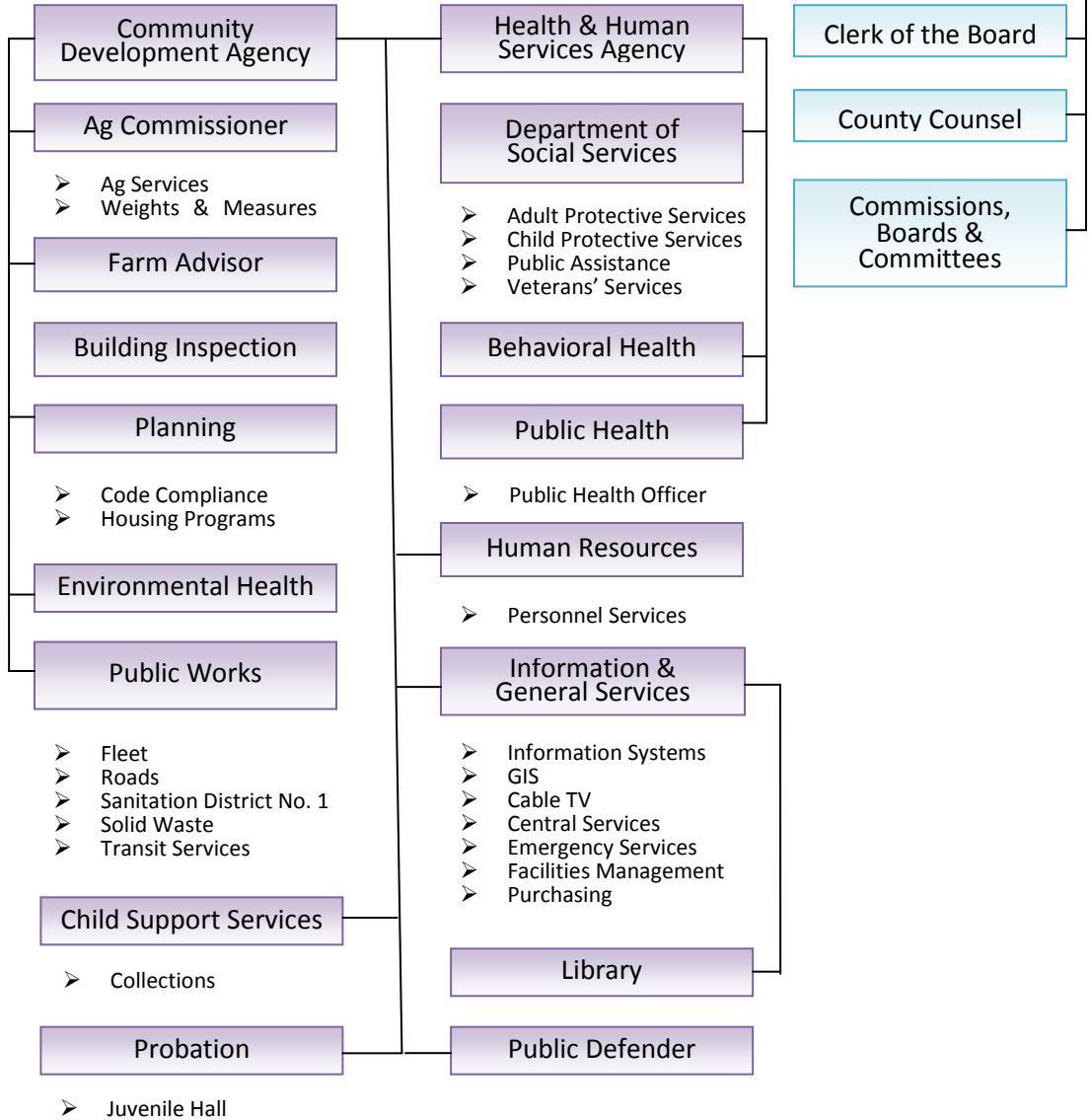


Airport
Risk Management

Elective Offices

- Assessor
- Auditor-Controller
- Clerk-Recorder
 - Clerk-Recorder Elections
- District Attorney
 - Victim/Witness
- Sheriff-Coroner
 - Animal Control
 - Corrections
 - Court Security
 - Operations
- Treasurer-Tax Collector
 - Collections
- Superintendent of Schools
- Superior Court
 - Grand Jury

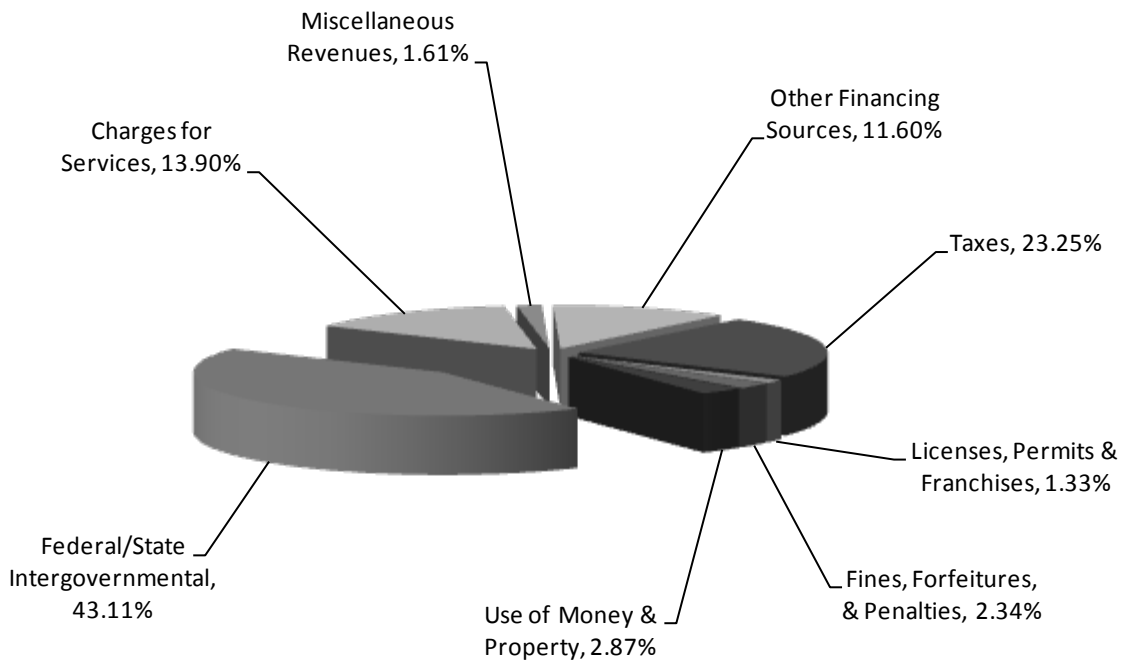
Appointive Offices



Revenues by Source

2011/2012 Budget Summary

<i>Revenues</i>	<u>09/10 Adopted</u>	<u>10/11 Adopted</u>	<u>10/11 Estimated</u>	<u>11/12 Proposed</u>	<u>11/12 Adopted</u>
Taxes	40,626,929	39,519,422	37,965,354	38,680,555	38,680,555
Licenses, Permits & Franchises	2,289,460	2,331,996	2,265,517	2,210,177	2,210,177
Fines, Forfeitures, & Penalties	3,662,501	3,884,589	3,677,271	3,894,922	3,894,922
Use of Money & Property	4,791,419	4,598,212	4,674,487	4,767,653	4,767,653
Federal/State Intergovernmental	76,447,781	74,812,603	76,447,547	71,715,846	71,715,846
Charges for Services	22,937,082	23,705,035	23,358,992	23,125,406	23,125,406
Miscellaneous Revenues	6,335,606	2,926,949	3,612,247	2,680,383	2,680,383
Other Financing Sources	19,097,259	20,429,599	21,504,011	19,291,413	19,291,413
Total Revenues	176,188,037	172,208,405	173,505,426	166,366,355	166,366,355



General Fund Discretionary Revenues

2011/2012 Budget

The following chart provides an historical picture of General Fund Discretionary Revenues. Unlike other county funding, which is required to be spent on specific programs, these revenues are considered discretionary because they are available for the Board to allocate to various programs and services.

However, approximately one-third is spent to leverage funding for programs with specific spending requirements, or to maintain State funding for some programs. The remainder funds programs not mandated by the State or Local Municipal Services such as Public Safety, Tax Collection, and Community Development.

Fiscal Year	Property and Related Taxes	Sales Taxes	Franchise Fees	Interest	Motor Vehicle In-lieu	Other	Total
96/97	\$12.54	\$2.62	\$0.34	\$0.42	\$0.75	\$1.14	\$17.81
97/98	\$12.86	\$2.62	\$0.38	\$0.53	\$0.99	\$1.23	\$18.61
98/99	\$13.55	\$2.80	\$0.38	\$0.69	\$1.00	\$1.20	\$19.62
99/00	\$14.42	\$3.29	\$0.39	\$0.79	\$1.18	\$1.58	\$21.65
00/01	\$15.36	\$3.49	\$0.41	\$1.34	\$1.51	\$1.81	\$23.92
01/02	\$16.45	\$3.52	\$0.80	\$0.91	\$1.56	\$1.36	\$24.60
02/03	\$17.98	\$3.37	\$0.80	\$0.58	\$1.73	\$1.50	\$25.96
03/04	\$19.16	\$3.58	\$0.86	\$0.24	\$0.18	\$1.60	\$25.62
04/05	\$27.57	\$3.53	\$0.80	\$0.34	\$0.01	\$1.66	\$33.91
05/06	\$30.76	\$2.86	\$0.82	\$0.43	\$0.00	\$2.20	\$37.07
06/07	\$34.25	\$3.65	\$0.97	\$0.83	\$0.03	\$2.58	\$42.31
07/08	\$36.46	\$3.41	\$1.01	\$0.96	\$0.00	\$2.19	\$44.03
08/09	\$37.25	\$2.79	\$1.05	\$0.39	\$0.00	\$1.95	\$43.43
09/10	\$37.63	\$2.72	\$1.03	\$0.05	\$0.00	\$2.13	\$43.56
10/11	\$35.36	\$2.72	\$1.05	\$0.12	\$0.00	\$2.01	\$41.26
11/12	\$35.35	\$2.77	\$1.05	\$0.13	\$0.00	\$2.01	\$41.31

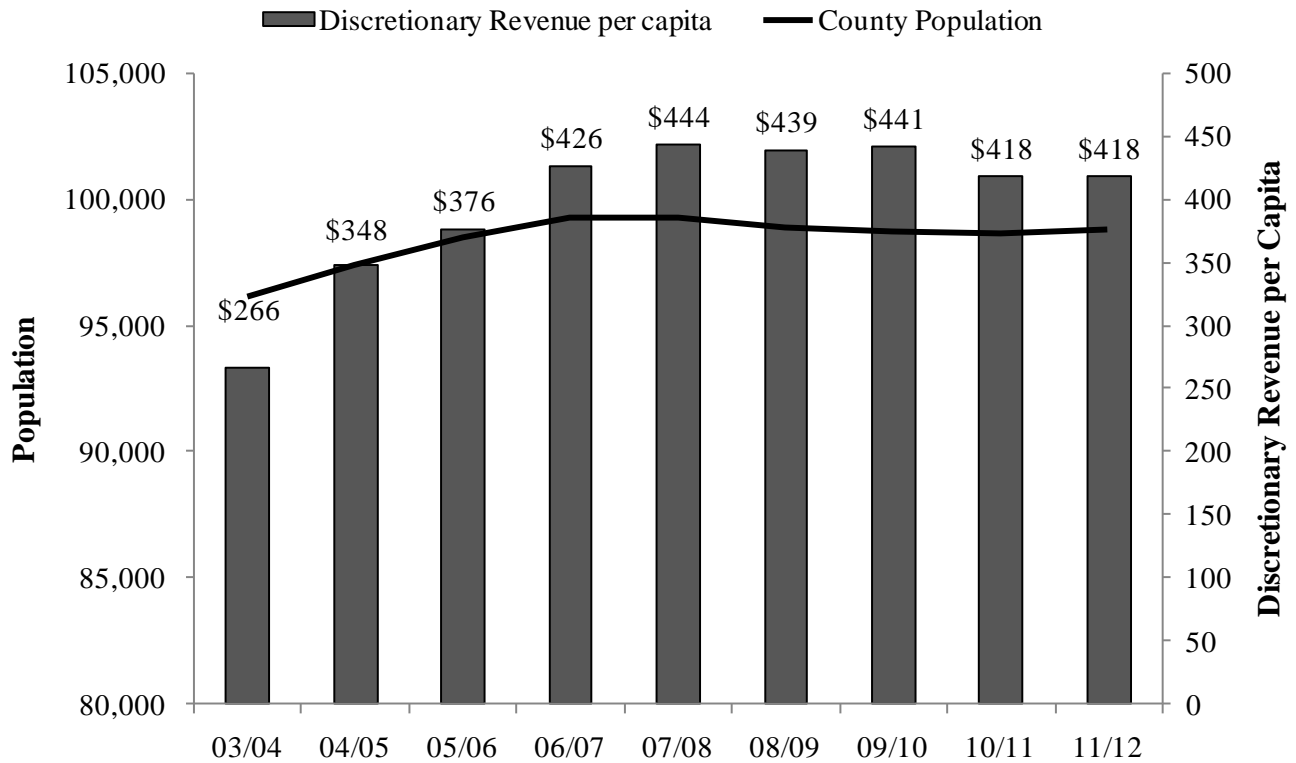
(Expressed in millions)

Note: Increases in Taxes and reduction in Motor Vehicle In-lieu in 04/05 are due in part to State of California MVLFF/Property Tax swap.



Discretionary Revenue Per Capita

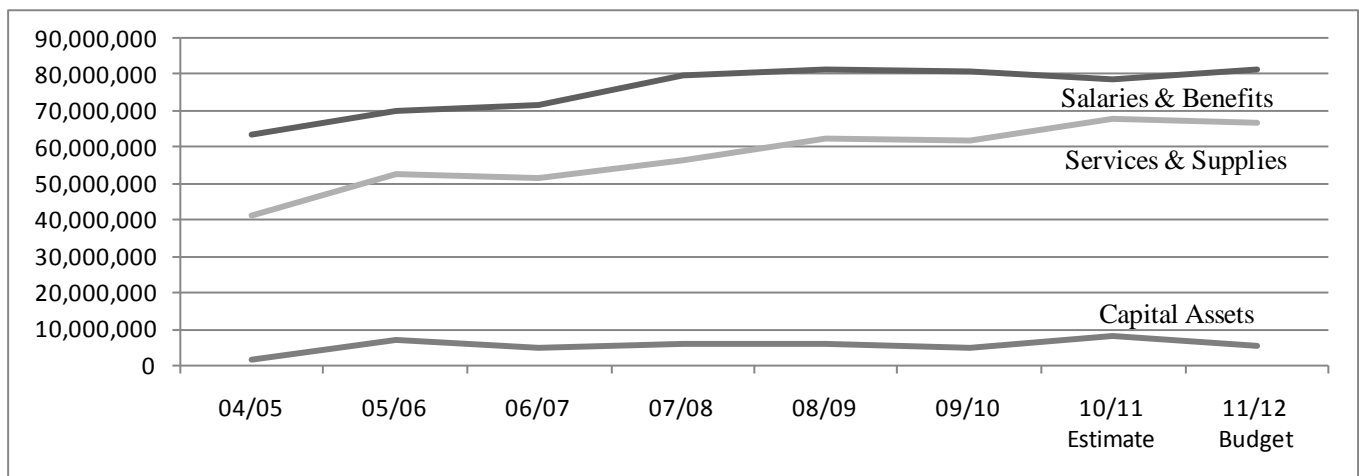
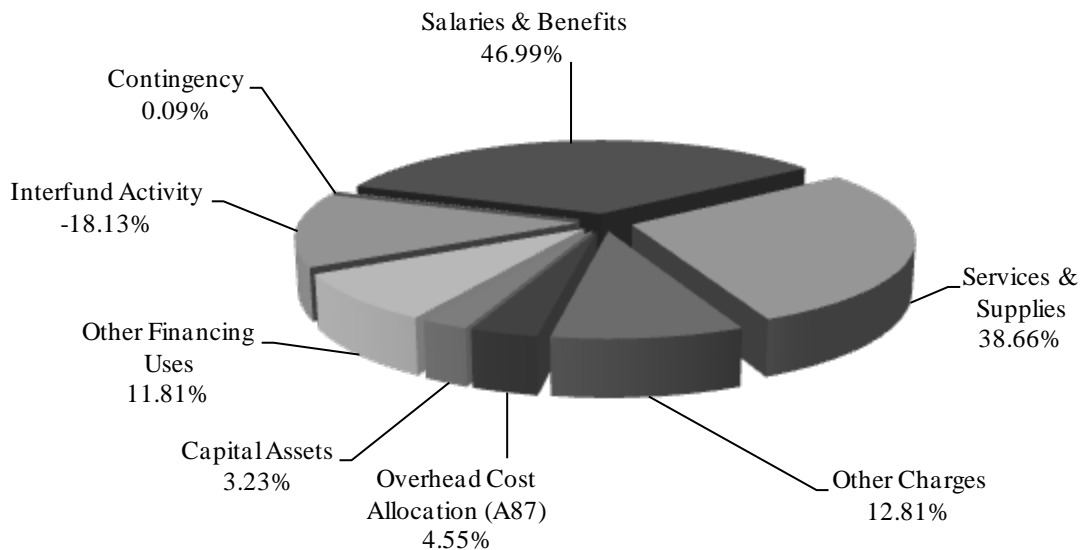
The trend in County Discretionary Revenue per Capita increased from 03-04 to 04-05 reflecting the State of California MVLF/Property Tax Swap. From 04-05 to 07-08 the trend increased due in large part to property tax growth. Property Taxes are projected to be flat in 11-12.



Expenditures by Cost Category

2011/2012 Budget Summary

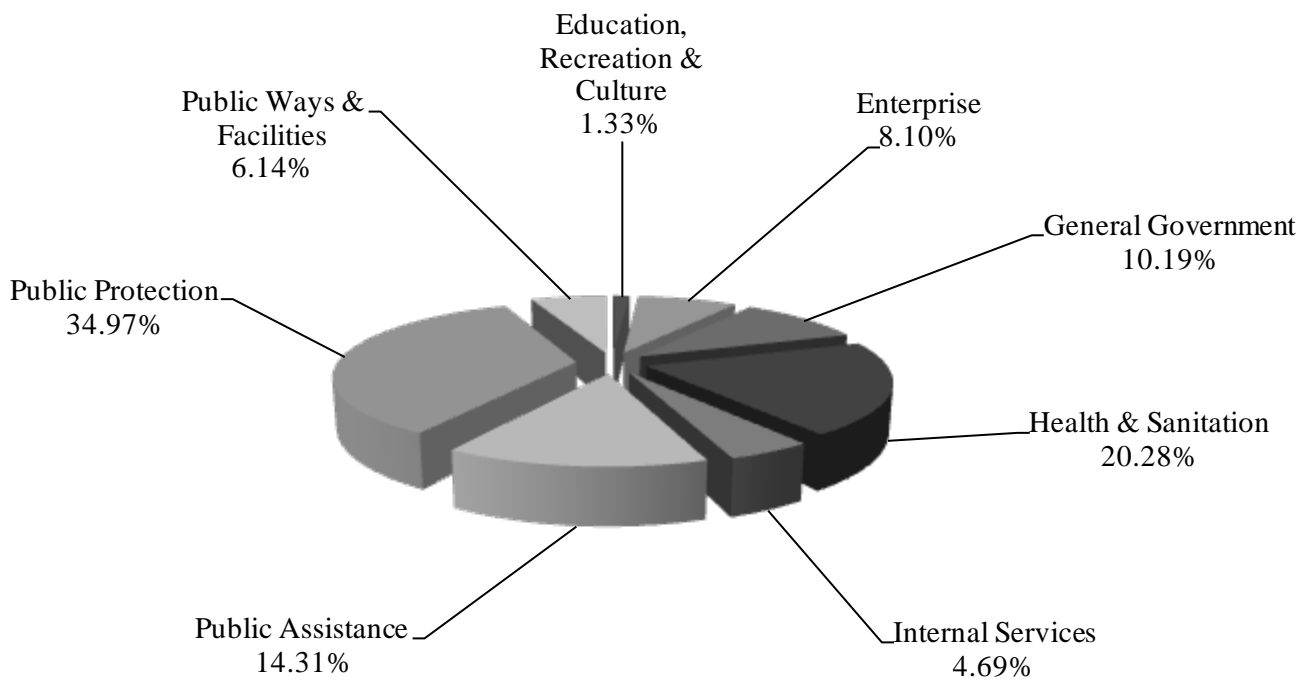
<i>Expenses</i>	<u>09/10</u> <u>Actual</u>	<u>10/11</u> <u>Adopted</u>	<u>10/11</u> <u>Estimated</u>	<u>11/12</u> <u>Proposed</u>	<u>11/12</u> <u>Adopted</u>
Salaries & Benefits	80,665,406	82,764,991	78,634,091	81,216,528	81,216,528
Services & Supplies	62,265,954	66,166,936	67,986,325	66,821,216	66,821,216
Other Charges	22,645,243	25,655,186	21,454,940	22,138,273	22,138,273
Overhead Cost Allocation (A87)	8,483,840	8,923,823	8,924,148	7,869,061	7,869,061
Capital Assets	5,260,247	7,374,255	8,277,104	5,579,593	5,579,593
Other Financing Uses	18,932,000	20,480,450	21,699,503	20,418,690	20,418,690
Interfund Activity	(25,762,029)	(29,523,488)	(29,590,721)	(31,343,019)	(31,343,019)
Contingency	-	150,000	-	150,000	150,000
Total Expenses	172,490,661	181,992,153	177,385,390	172,850,342	172,850,342



Expenditures by Function

2011/12 Budget Summary

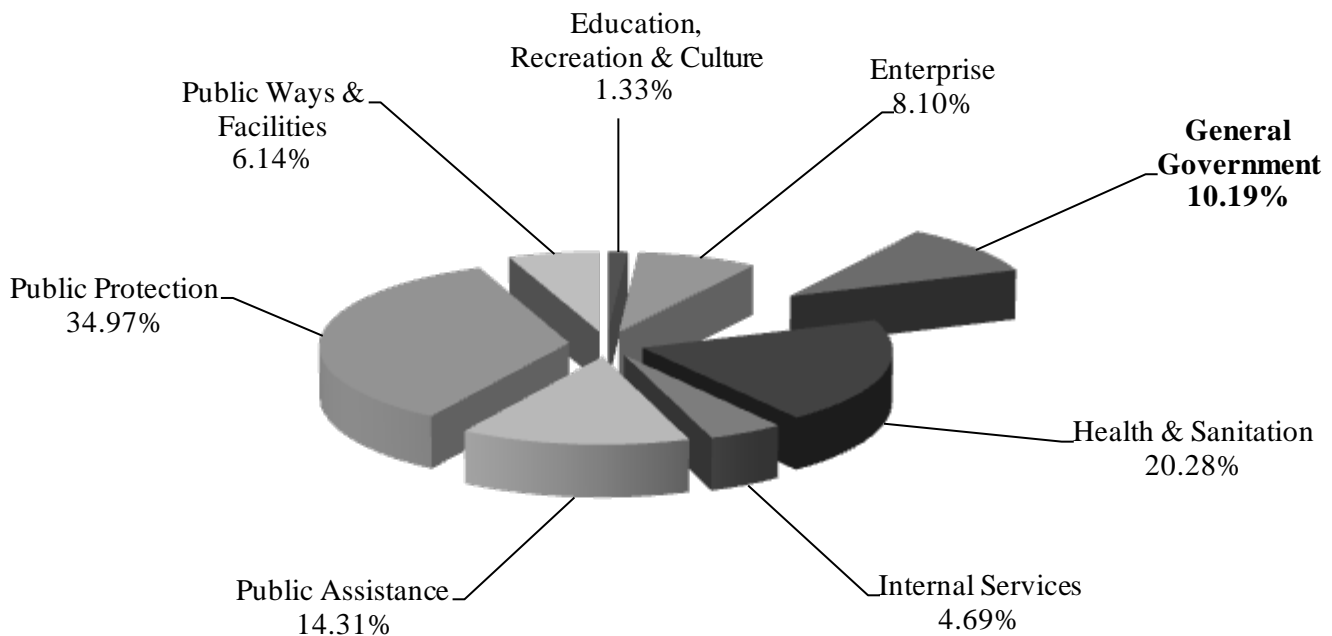
General Government	17,609,097
Public Protection	60,453,369
Public Ways and Facilities	10,608,202
Health & Sanitation	35,060,961
Public Assistance	24,728,448
Education, Recreation & Culture	2,290,635
Enterprises	14,000,871
Internal Services	8,098,759
	<u>172,850,342</u>



General Government

Functional 2011/12 Budget

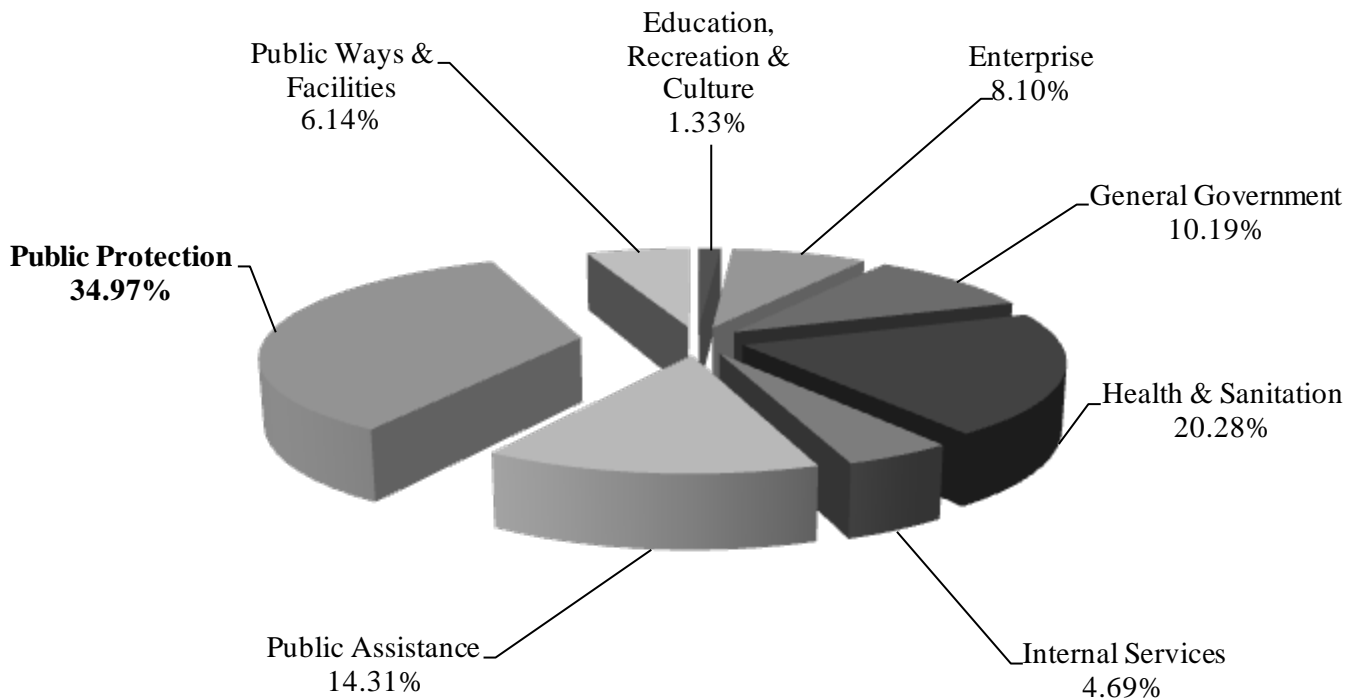
Clerk of the Board	10101	1,060,258	Facilities Management	10702	2,338,829
Annual Audit Services	10102	28,654	Capital Facilities Projects	10801	44,187
County Executive Office	10103	1,131,929	Crim. Just.Temp Fac. Constr.	10803	154,568
Assessment & Valuation	10201	2,561,108	Courthouse Constr. Fund	10804	-
Accounting, Audit & Tax	10202	1,446,802	Economic Development	10902	341,300
Tax Collection & Treasury	10203	1,057,715	Assessment Appeals Board	11001	1,079
Purchasing	10204	299,280	Info. & General Svcs Admin	11003	19,582
Collections	10205	180,364	Ins.-Property & Casualty	11004	76,193
Other Fin. Sources & Uses	10206	(2,038,118)	Risk Management Admin.	11005	-
Trial Court Funding	10207	1,433,572	Historical Landmarks	11006	217
WWE Escrow	10209	3,060	Information Systems	11007	1,235,386
Community Facilities Dist	10210	109	Geographic Info. Systems	11008	418,497
Provision for Contingency	10212	150,000	Surveying	11009	61,356
MVLF License Fees	10213	-	Cable TV Services	11010	126,866
Building Debt Financing	10214	1,883,056	Probation Fire Insurance Clm	11011	98,412
Legal Counsel	10301	780,704	Transit Self-Insurance	11012	27,662
Personnel Services	10401	858,148	Insurance - Worker's Comp.	11015	417,307
Elections	10501	1,173,738	Other Debt Financing	11016	237,277
					17,609,097



Public Protection

Functional 2011/12 Budget

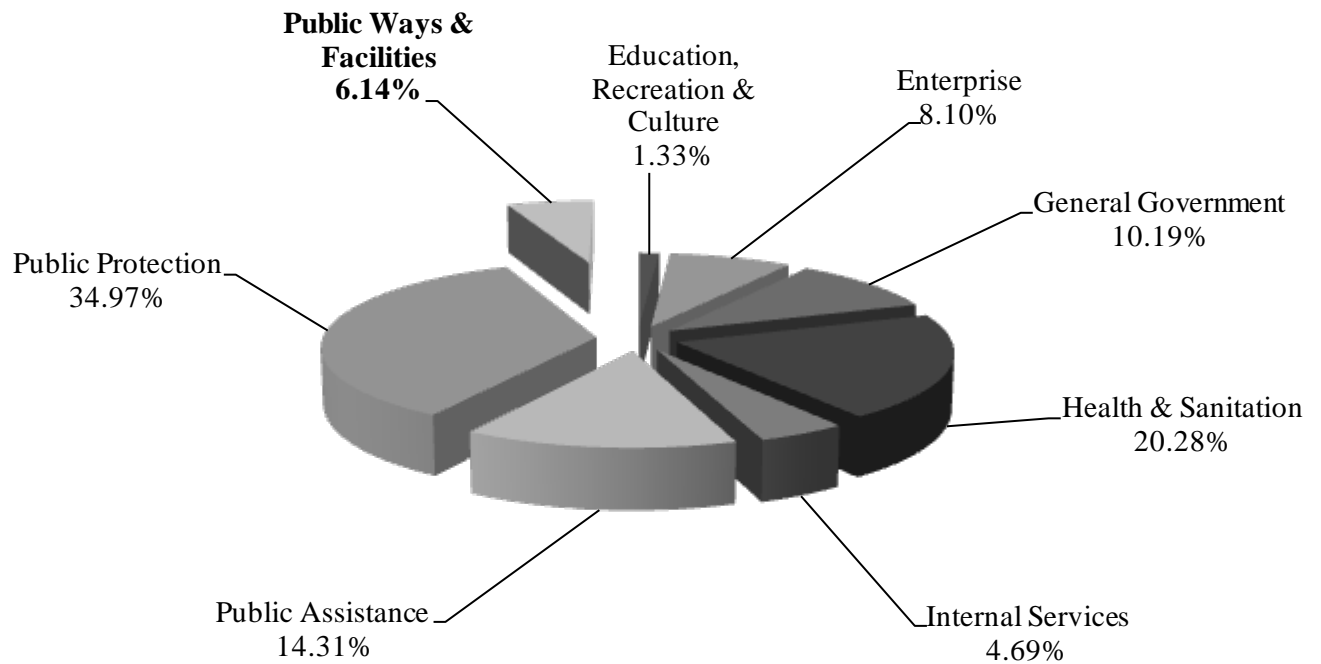
Court Security	20101	860,114	Agriculture Services	20601	577,089
Grand Jury	20102	111,428	Building Inspection	20602	1,089,354
District Attorney	20103	3,561,992	Weights & Measures	20603	130,443
Public Defender	20107	1,944,107	Recorder	20701	1,067,795
Child Support Services	20109	4,371,597	Emergency Management	20702	562,995
Conflict Indigent Defense	20111	489,203	Animal Control	20704	1,198,854
Dispute Resolution	20112	40,000	Fish & Game	20705	4,612
Sheriff Services	20201	15,139,450	CDA Administration	20707	(13,853)
Corrections	20301	9,716,424	Planning	20708	2,259,807
Inmate Medical Services	20302	1,806,338	Code Compliance	20709	772,917
Truckee Operations	20304	2,440,114	Public Safety Augment.	20710	5,061,529
Juvenile Hall	20310	2,622,631			60,453,369
Probation	20320	4,638,429			



Public Ways & Facilities

Functional 2011/12 Budget

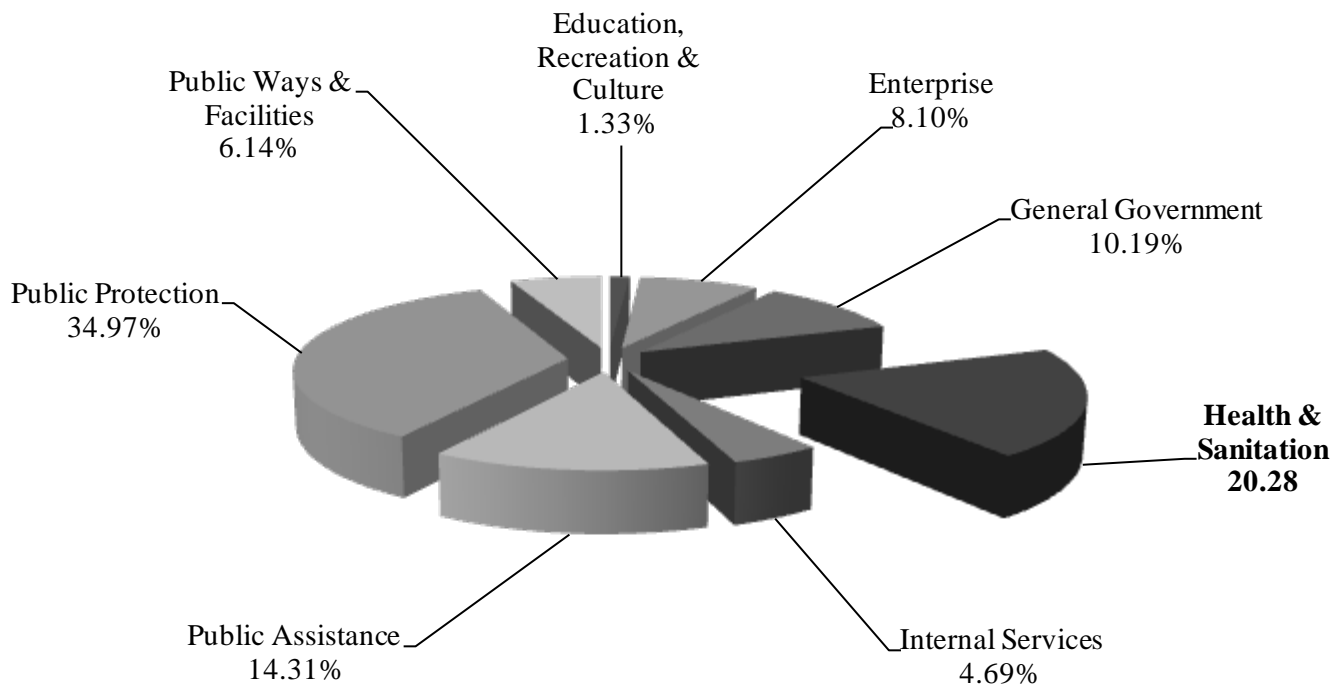
Dept. of Public Works Admin	30100	-
Roads-Administration	30101	318,450
Mitigation Funds	30102	217,601
CSA/PRD	30103	448,313
Engineering-Roads	30104	631,155
Maintenance-Roads	30107	7,020,000
Elect Svc Avail-Mitigation	30120	21,729
Road Capital Improvements	30154	1,950,954
		10,608,202



Health & Sanitation

Functional 2011/12 Budget

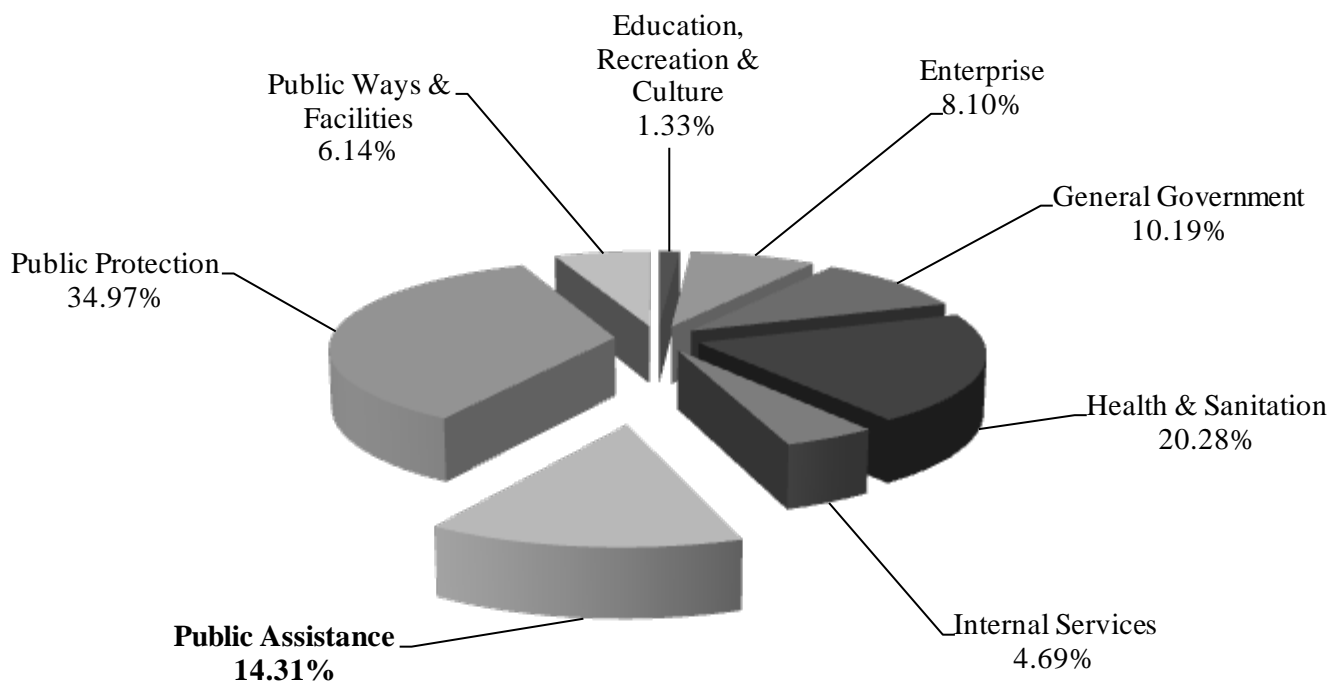
Community Health Admin.	40101	753,943	Public Health Nursing	40113	289,985
Health & Wellness	40102	273,440	Social Services Rlgn.	40118	3,073,267
Behavioral Health Admin.	40103	1,833,518	Behavioral Health Rlgn.	40119	2,038,298
Children's Behavioral Health	40104	7,502,806	Environmental Health Rlgn.	40120	280,554
Alcohol & Drug Programs	40105	1,568,923	Community Health Rlgn.	40121	780,886
Emergency Medical & Prep.	40107	461,863	Juvenile Hall Realignment	40122	281,201
Environmental Health	40108	2,350,773	Vector Control	40123	200,545
County Medical Services Pgm	40109	1,877,882	Health CCS Realignment	40129	211,777
Adult Behavioral Health	40110	8,585,072	SB 163 Wraparound Program	40140	247,579
Maternal & Child Health	40111	1,855,918	Solid Waste - Oil	40401	36,045
Clinical Services	40112	556,686			<u>35,060,961</u>



Public Assistance

Functional 2011/12 Budget

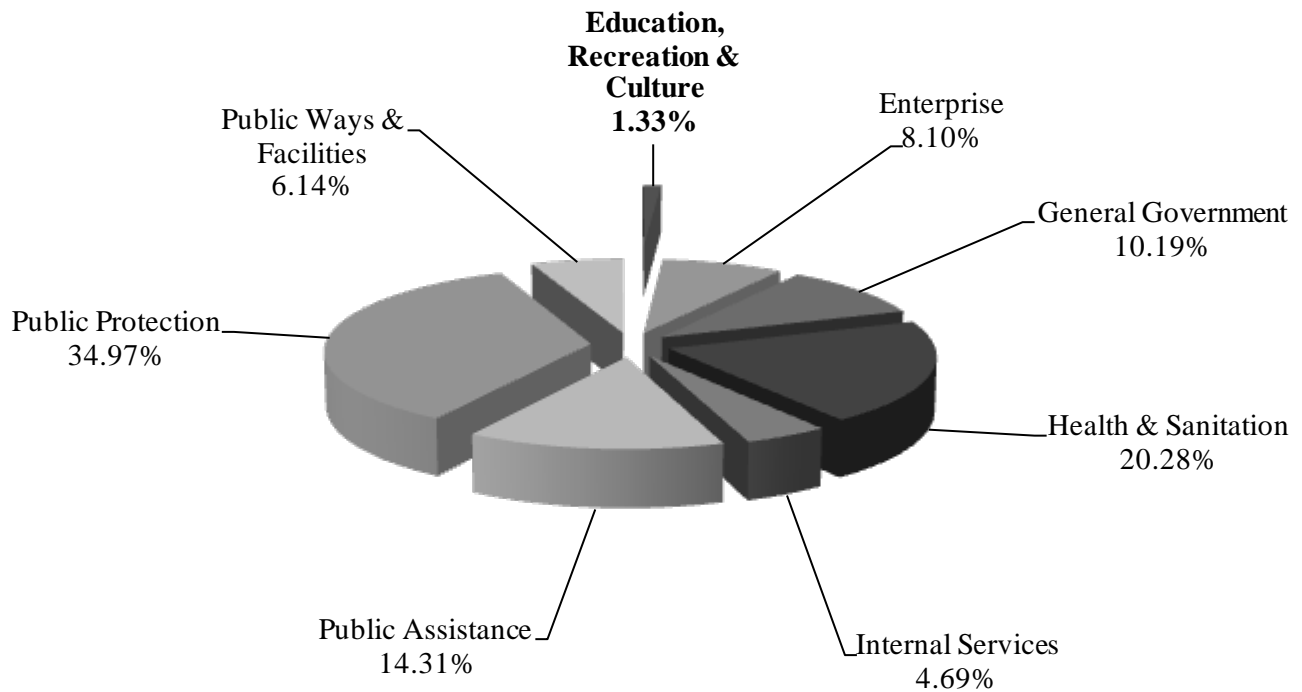
Human Services Administration	50101	122,000	Veterans Services	50501	165,638
Adult & Family Serv. Admin.	50102	500	Social Services Admin	50601	56,080
Adult Services Administration	50103	1,897,910	Community Services	50602	148,974
Child Welfare Services Admin.	50104	2,747,523	Energy Assistance	50603	485,400
Eligibility Services Admin.	50105	8,003,886	Homebuyer Assistance	50604	60,000
Child Welfare Serv. Assistance	50204	3,575,738	Housing Dev/Rehabilitation	50605	186,100
Eligibility Services Assistance	50205	4,703,471	Victim/Witness	50608	282,619
In-Home Supportive Services	50206	2,292,609			<u>24,728,448</u>



Education, Recreation & Culture

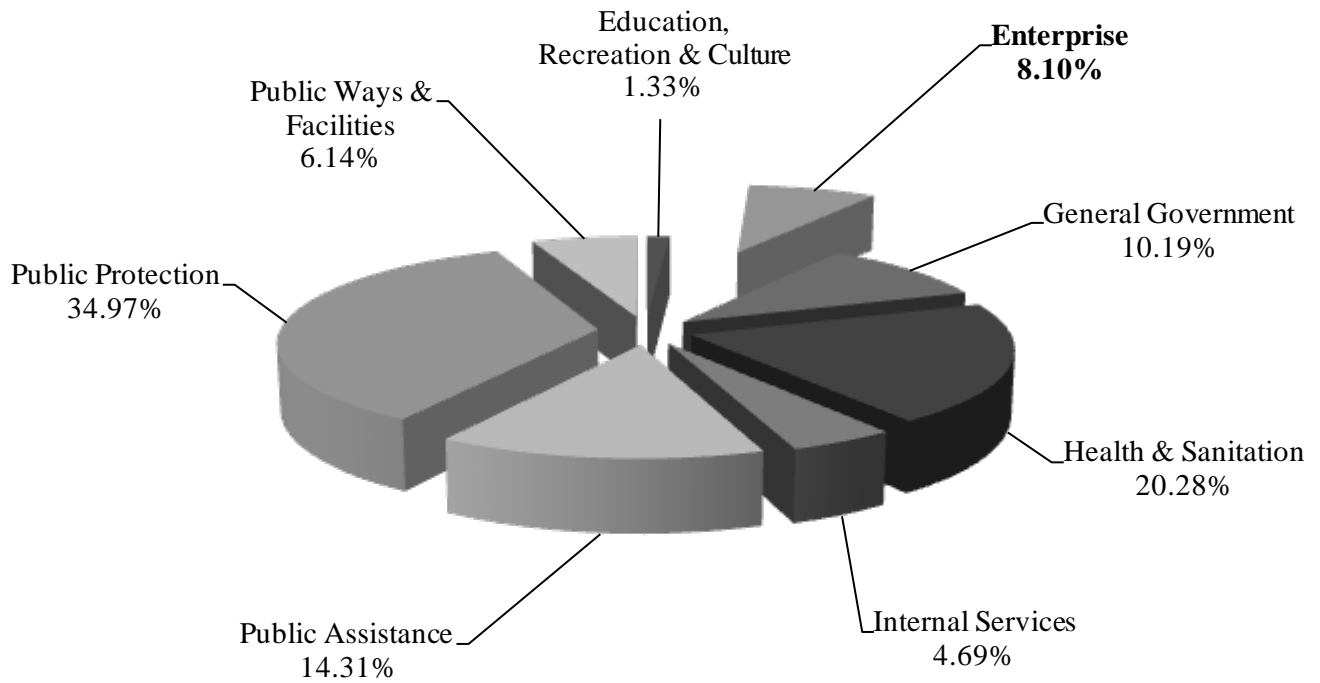
Functional 2011/12 Budget

Library Services	60201	2,216,583
Farm Advisor	60301	43,873
Forest Reserve	60401	30,179
Recreation Funding	70101	-
Dryden Wilson	70104	-
		2,290,635



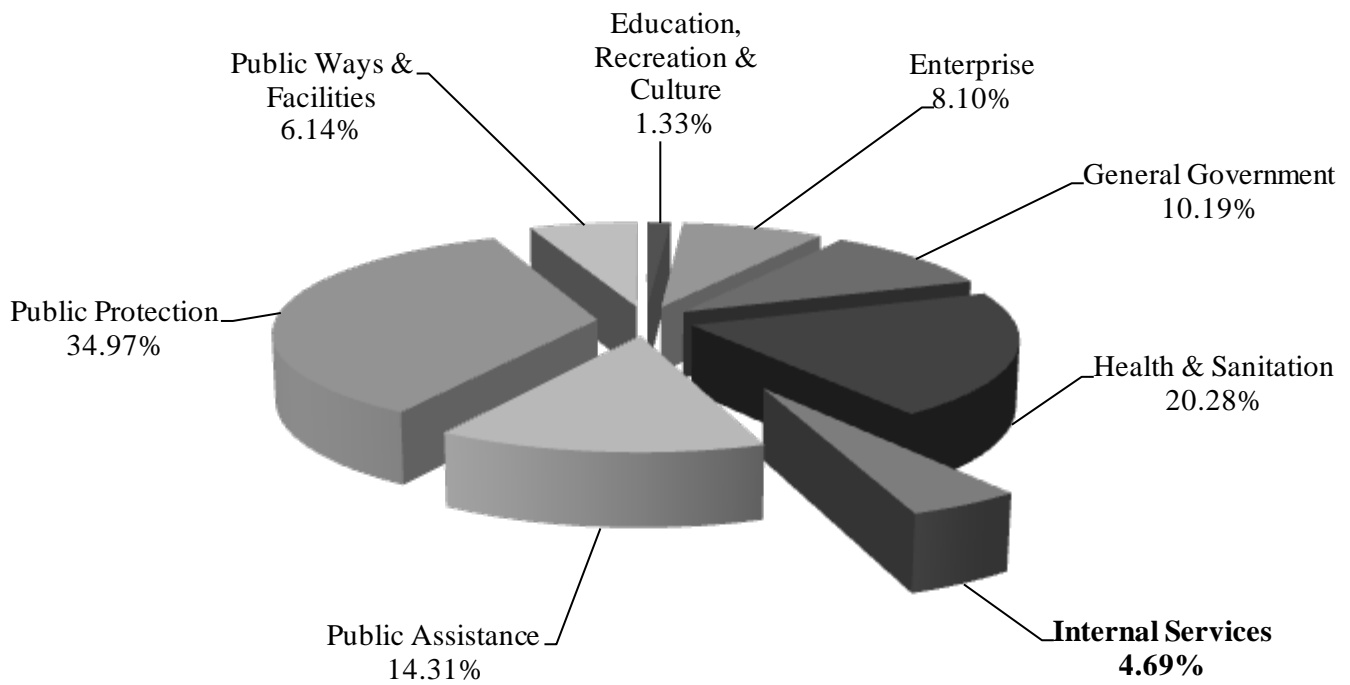
Enterprises

Solid Waste -Western	91001	7,235,685
Solid Waste -Eastern	91002	182,195
Transit Services	91003	3,418,033
Airport	91004	3,164,958
		<u>14,000,871</u>

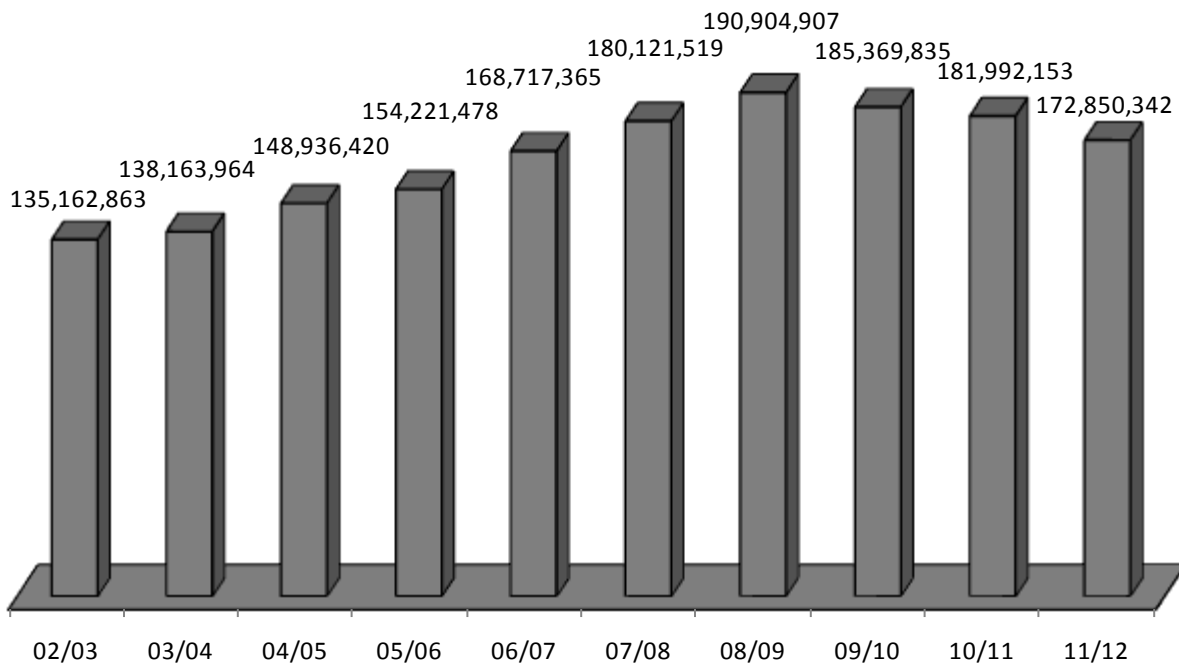


Internal Services

Fleet Management	92001	1,417,201
Insurance - General Liability	92002	1,848,729
Insurance - Benefits	92003	1,789,548
Central Services	92004	627,919
Fleet Services	92005	2,415,362
		<u>8,098,759</u>



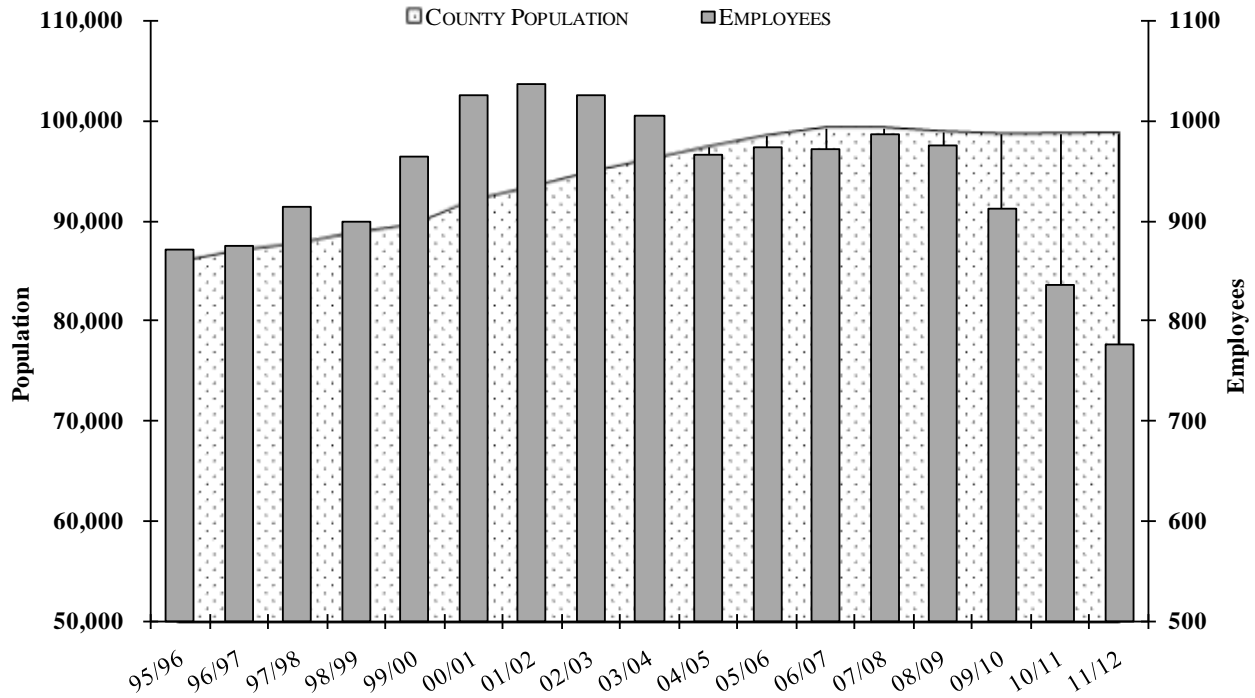
The proposed final budget for 2011/12 totals \$172,850,342. The following graph presents the historical trend in the County's budget. It should be noted that in Fiscal Year 2002/03 GASB 34 required many additional funds to be budgeted, which were not budgeted in prior years. This increase was approximately \$13,600,000. Again in 2004/05 Funds were added totaling approximately \$5,600,000.



Total Staffing

09/10 Actual	10/11 Adopted	10/11 Estimated	11/12 Proposed
860	836	796	777

Includes Sanitation District and Housing Authority



Budget Summary by Fund

2011/12 Budget

		June 30, 2011				June 30, 2012
		Projected	FY 11/12	FY 11/12	FY 11/12	Projected
		Fund Balance	Revenue	Expense	Net Change	Fund Balance
General Fund	0101	19,429,000	59,474,436	61,614,436	(2,140,000)	17,289,000
Fish and Game Admin	1113	35,557	4,132	4,612	(480)	35,077
Roads Fund	1114	6,152,280	9,809,149	9,920,559	(111,410)	6,040,870
Prop Main/Nuisance Abatement	1119	194,217	71,700	178,549	(106,849)	87,368
Capital Facilities Mitigation	1120	83,132	374	-	374	83,506
CDA Admin	1123	(5,394)	10,000	(13,853)	23,853	18,459
CDA Building	1123	274,925	1,089,354	1,089,354	-	274,925
CDA Environmental Health	1123	18,670	2,280,023	2,280,023	-	18,670
CDA Planning	1123	324,490	1,434,219	1,459,838	(25,619)	298,871
CDA-Code Enforcement	1123	65,113	564,978	594,368	(29,390)	35,723
Environmental Health Penalties	1124	99,668	8,000	53,500	(45,500)	54,168
Child Support Services	1125	375,791	4,371,597	4,371,597	-	375,791
Vector Control	1123	10,478	190,530	200,545	(10,015)	463
Forest Reserves	1130	14,836	15,343	30,179	(14,836)	-
Recycled Oil Block Grant	1131	38,029	103	36,045	(35,942)	2,087
Dryden Wilson Bequest	1135	57,408	220	-	220	57,628
Prop 36 SACPA	1136	81,493	1,000	75,636	(74,636)	6,857
Probation Fire Insurance Claim	1137	98,012	400	98,412	(98,012)	-
WWE Escrow Account	1139	316	3,062	3,060	2	318
Automated Warrants	1141	69,806	350	-	350	70,156
Nevada Co. Council on Alcohol	1144	142,279	22,841	22,000	841	143,120
Drug Education Trust	1145	11,751	1,773	-	1,773	13,524
Alcohol Education Program	1146	84,874	22,226	31,122	(8,896)	75,978
Emergency Medical Srvcs Assmt	1147	108,641	215,079	219,935	(4,856)	103,785
Bioterrorism Grant	1150	9,994	208,690	208,690	-	9,994
CDC PHER	1152	15,901	-	-	-	15,901
Domestic Violence Program	1153	268	13,750	13,750	-	268
Micrographic Admin	1154	127,591	39,237	88,658	(49,421)	78,170
Truncation	1155	94,089	39,314	1,562	37,752	131,841
Children's Trust	1156	19,434	10,000	10,000	-	19,434
Automation Admin	1157	199,028	157,154	267,060	(109,906)	89,122
Public Library	1165	483,491	2,133,092	2,216,583	(83,491)	400,000
Civil Process	1168	73,113	16,200	776	15,424	88,537
Attachment Assessment	1169	90,412	18,500	9,000	9,500	99,912
Rural & Small County J.A.P.	1171	804,395	1,000	301,931	(300,931)	503,464
Comm. Fac. Dist. #1990-1 Wildwood	1186	1,075,424	4,979	109	4,870	1,080,294
Cable Inet & Peg	1190	107,284	98,860	88,025	10,835	118,119
WWW Mello-Roos	1268	43,234	160	-	160	43,394
Criminal Justice Temp	1304	19,431	183,350	154,568	28,782	48,213
SB 678 Fund	1322	98,049	390,405	327,914	62,491	160,540
Correctional Training	1323	-	26,225	26,225	-	-
Correctional Training	1324	-	40,000	40,000	-	-
Local Detention Facility Fund	1333	-	65,000	65,000	-	-
Vital Records	1335	8,073	9,300	2,700	6,600	14,673
Recorder - VRIP	1336	33,756	4,125	16,735	(12,610)	21,146
Inmate Welfare Fund	1339	34,524	116,720	113,860	2,860	37,384



Budget Summary by Fund

2011/12 Budget

		June 30, 2011			June 30, 2012	
		Projected	FY 11/12	FY 11/12	FY 11/12	Projected
		Fund Balance	Revenue	Expense	Net Change	Fund Balance
Workers Compensation	1350	450,227	57,815	417,307	(359,492)	90,735
Animal Health Care	1357	27,772	-	27,772	(27,772)	-
Spay and Neuter	1358	12,256	2,940	1,000	1,940	14,196
Ward Welfare Fund	1359	7,187	5,420	5,420	-	7,187
DUI Lab Fees	1369	9,488	22,000	30,500	(8,500)	988
Courthouse Construction Fund	1398	-	-	-	-	-
CDBG-RE-USE Admin	1435	61,222	10,350	10,000	350	61,572
Federal Asset Forfeiture	1450	378,541	51,500	118,095	(66,595)	311,946
Probation Asset Forfeiture	1452	1,447	7	-	7	1,454
Fingerprint Identification	1453	200,809	45,200	17,212	27,988	228,797
DA Asset Forfeiture	1454	12,162	6,065	-	6,065	18,227
DA Environmental Enforcement	1457	20,750	65	-	65	20,815
Public Safety Augmentation	1468	-	5,061,529	5,061,529	-	-
Health & Welfare Local Trust: CCS	1480	456,050	166,622	211,777	(45,155)	410,895
Health & Welfare Local Trust: PH	1480	329,162	726,531	780,886	(54,355)	274,807
Health & Welfare Local Trust: DSS	1480	1,849,842	2,908,700	3,073,267	(164,567)	1,685,275
Health & Welfare Local Trust: BH	1480	1,871,116	1,601,376	2,038,298	(436,922)	1,434,194
Health & Welfare Local Trust	1480	202,302	213,767	281,201	(67,434)	134,868
Health & Welfare Local Trust : EH	1480	43,105	235,614	280,554	(44,940)	(1,835)
Dispute Resolution	1486	27,939	24,240	40,000	(15,760)	12,179
Mental Health Services Act	1512	5,016,180	3,303,453	4,261,952	(958,499)	4,057,681
Health & Human Services Agency	1589	1,101,497	44,220,521	44,015,171	205,350	1,306,847
Tobacco Education Fund	1603	24,016	150,250	153,358	(3,108)	20,908
Housing & Community Services	1607	1,891	59,070	56,080	2,990	4,881
CALHOME Program Income	1608	99,651	16,350	56,000	(39,650)	60,001
USDA HPG	1610	(51)	21,600	21,600	-	(51)
Home Program Income	1611	7,045	60,000	60,000	-	7,045
CalHOME	1614	46,972	53,650	53,500	150	47,122
09C-1826 ARRA DOE/WAP	1618	(33,847)	470,000	485,400	(15,400)	(49,247)
08-HOME-4691	1621	(104,972)	-	-	-	(104,972)
Managed Care	1623	37,293	316,426	316,326	100	37,393
Nevada City Recreation Mitigation	1626	418,340	4,774	-	4,774	423,114
Grass Valley Recreation Mitigation	1627	98,400	5,252	-	5,252	103,652
Twin Ridges Recreation Mitigation	1628	89,532	1,141	-	1,141	90,673
ESA Mitigation Fund	1629	154	21,976	21,729	247	401
Darkhorse Improvements	1630	1,179,557	8,000	799,969	(791,969)	387,588
Youth Offender Block Grant	1639	212,917	258,372	328,344	(69,972)	142,945
Law Enforcement Svcs - JJCPA	1640	67,894	400	55,156	(54,756)	13,138
LEA Assistance Environ Hlth	1641	4,752	17,250	17,250	-	4,752
Law Enforcement Services	1642	185,897	700	104,869	(104,169)	81,728
CDBG Rhehab Rev Loan Admin	1645	80,967	24,400	45,000	(20,600)	60,367
Motor Vehicle License Fee	1649	-	-	-	-	-
CDBG ED Rev Loan	1650	79,365	28,900	-	28,900	108,265
09B-5526 LIHEAP	1653	27,946	-	-	-	27,946
State DNA Act	1675	311,650	57,400	-	57,400	369,050



Budget Summary by Fund

2011/12 Budget

		June 30, 2011			June 30, 2012	
		Projected	FY 11/12	FY 11/12	FY 11/12	Projected
		Fund Balance	Revenue	Expense	Net Change	Fund Balance
Anti-Drug Abuse/Gang Div	1679	41,487	430	-	430	41,917
State Asset Forfeiture	1680	6,668	530	-	530	7,198
06EDBG/07 EDEF	1684	11,715	185,325	185,300	25	11,740
CDBG 03-STBG-1842 Rehab	1700	(22,415)	-	-	-	(22,415)
08 CSBG 08F-4930	1711	46,143	133,974	133,974	-	46,143
CDBG Gen PTA	1712	42	-	-	-	42
CDBG -ED-PTA	1713	-	31,000	31,000	-	-
Transit Self-Insurance	1785	76,762	27,662	27,662	-	76,762
Government Debt Service	3150	-	237,277	237,277	-	-
Airport	4116	152,467	3,170,127	3,164,958	5,169	157,636
Solid Waste - Western	4117	(6,501,658)	6,724,748	7,235,685	(510,937)	(7,012,595)
Solid Waste - Eastern	4118	132,848	169,352	182,195	(12,843)	120,005
Transit Services	4281	(117,492)	3,418,033	3,418,033	-	(117,492)
Fleet Management	4290	1,437,256	1,461,855	1,417,201	44,654	1,481,910
Fleet Services	4291	122,644	2,415,362	2,415,362	-	122,644
Central Services	4332	11,178	627,919	627,919	-	11,178
Vision Internal Service	4352	40,536	186,940	186,234	706	41,242
Unemployment Internal Service	4355	(219,482)	738,800	737,933	867	(218,615)
General Liability	4356	3,733	1,844,996	1,848,729	(3,733)	-
Dental Internal Service	4498	167,384	814,981	865,381	(50,400)	116,984
Mitigation Funds	Various	2,205,809	294,702	217,601	77,101	2,282,910
CSA's/PRD's	Various	1,398,941	475,766	448,313	27,453	1,426,394
	Fund Total		166,366,355	172,850,342	(6,483,987)	
	Indep. Authority Fund Total		12,396,913	13,762,073	(1,365,160)	



Changes in General Fund Balance (000 Omitted)

2011/12 Budget

	Audited 6/30/10 Balance	Adopted Budget Changes 10/11	Additional Changes 10/11	Projected 6/30/11 Balance	Proposed 11/12 Changes	6/30/12 Estimated Balance
Fund Balance Changes:						
Fund Balance Carryover			(*) 279			
Addition/(Use) of Fund Balance		360			(330)	
Additional Commitments & Assignments		(360)	(650)		(860)	
Assigned for Future Purposes	3,004	0	(371)	2,633	(1,190)	1,443
Committed by Encumbrances	236			236		236
<u>Other Commitments</u>						
General Purpose	5,277			5,277	(1,310)	3,967
<u>Other Assignments</u>						
State Realignment	300			300		300
COP Payments	43			43		43
Accumulated Leave Liability	1,650			1,650		1,650
Information Systems Infrastructure	995	250	(95)	1,150	250	1,400
Facilities Planning	6,170			6,170		6,170
Pension Contribution	1,000			1,000		1,000
Civil Litigation	60	10		70	10	80
General Plan Update Costs	800	100		900	100	1,000
Total Other Commitments & Assignments	16,295	360	(95)	16,560	(950)	15,610
Total Fund Balance	19,535	360	(466)	19,429	(2,140)	17,289

(*) Loan Proceeds for Energy Retrofit expended in 09/10

General Fund Summary					
6/30/11 Projected Balance	FY 10/11 Carryover	11/12 Revenue	11/12 Expense	11/12 Net Change	6/30/12 Projected Balance
19,429	0	59,474	61,614	(2,140)	17,289



