

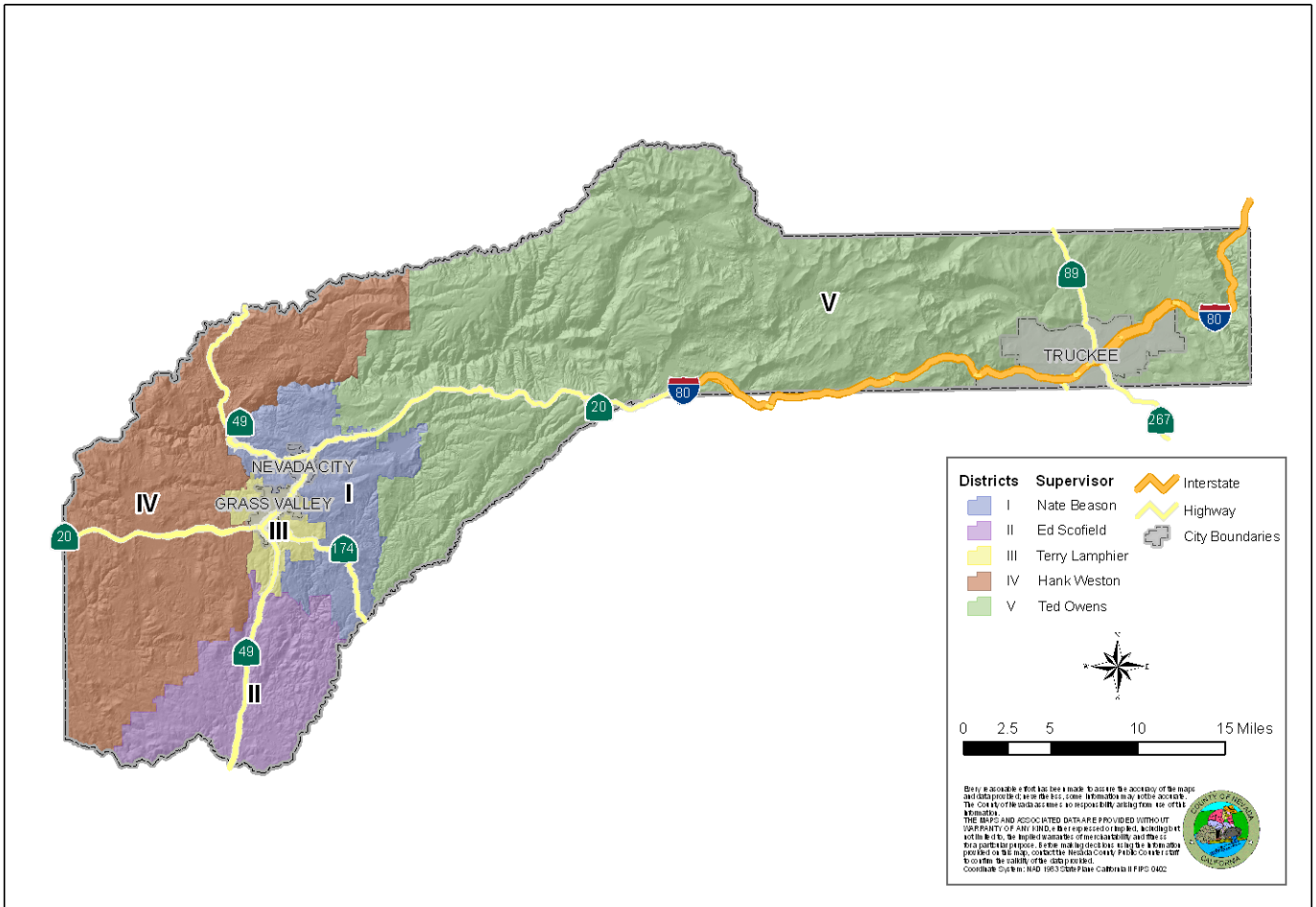


Nevada County

Final Budget Fiscal Year 2011-12



NEVADA COUNTY, CALIFORNIA SUPERVISORIAL DISTRICTS



District 1
Nate Beason

District 2
Ed Scofield
Chair

District 3
Terry Lamphier

District 4
Hank Weston

District 5
Ted Owens

Table of Contents

READER'S GUIDE	Page
Reader's Guide.....	IX

SECTION 1 - EXECUTIVE SUMMARY

Message from the County Executive Officer.....	1-1
Key Accomplishments for 2010-2011	1-5
County Vision, Mission, Values, Goals	1-9
Demographics & County Community Profile	1-10
County Organizational Chart	1-14
Revenues by Source.....	1-15
General Fund Discretionary Revenues	1-16
Discretionary Revenues Per Capita.....	1-17
Expenditures by Cost Category	1-10
Expenditures by Function	1-19
General Government.....	1-20
Public Protection.....	1-21
Public Ways & Facilities	1-22
Health & Sanitation	1-23
Public Assistance	1-24
Education, Recreation & Culture.....	1-25
Enterprises	1-26
Internal Services	1-27
Historical Budget Trend	1-28
County Staffing Relative to Population Growth	1-29
Budget Summary by Fund	1-30
Changes in General Fund Balance & Reserves	1-33

SECTION 2 – BUDGET SUMMARIES BY OFFICE /AGENCY/DEPARTMENT **Service Budget Unit**

AIRPORT	91004.....	2-1
ASSESSOR	10201.....	2-9
AUDITOR/CONTROLLER	10202.....	2-15
BOARD OF SUPERVISORS		2-23
□ Clerk of the Board	10101.....	2-26
□ Assessment Appeals Board	11001.....	2-30
CHILD SUPPORT SERVICES		2-33
□ Child Support Services	20109.....	2-36
□ Collections	10205.....	2-40
CLERK-RECORDER		2-45
□ Recorder	20701.....	2-48
□ Elections	10501.....	2-50
COMMUNITY DEVELOPMENT AGENCY		2-55
□ CDA Administration	20707.....	2-61
AGRICULTURAL COMMISSIONER		2-65
□ Agriculture Services	20601.....	2-68
□ Weights & Measure	20603.....	2-72
□ Fish & Wildlife	20705.....	2-74
FARM ADVISOR	60301.....	2-77



Table of Contents

BUILDING INSPECTION	2-85
□ Building Inspection	20602.....2-88
□ Electric Service Availability	30120.....2-90
ENVIRONMENTAL HEALTH	2-93
□ Environmental Health	40108.....2-96
□ Environmental Health Realignment	40120.....2-100
□ Vector Control	40123.....2-102
PLANNING	2-107
□ Planning	20708.....2-112
□ Recreation Mitigation Fees	70101.....2-116
□ Code Compliance	20709.....2-118
□ Housing Services Administration	50601.....2-122
□ Community Services	50602.....2-126
□ Energy Assistance	50603.....2-128
□ Homebuyer Assistance	50604.....2-132
□ Housing Development & Rehab	50605.....2-134
□ Economic Development	10902.....2-138
PUBLIC WORKS	2-143
□ DPW Administration	30100.....2-146
□ Roads Administration	30101.....2-148
□ Roads – Engineering	30104.....2-150
□ Roads – Capital Improvements	30154.....2-154
□ Roads – Maintenance	30107.....2-158
□ Surveyor	11009.....2-160
□ Mitigation Funds	30102.....2-162
□ CSA / PRD	30103.....2-164
□ Fleet Management	92001.....2-166
□ Fleet Services	92005.....2-168
□ Transit Services	91003.....2-170
□ Transit Self-Insurance	11012.....2-174
□ Solid Waste-Western	91001.....2-176
□ Solid Waste –Eastern	91002.....2-180
□ Solid Waste - Oil	40401.....2-182
COUNTY COUNSEL	10301.....2-185
COUNTY EXECUTIVE OFFICE	10103.....2-193
DISTRICT ATTORNEY	2-201
□ District Attorney	20103.....2-204
□ Victim/Witness Assistance	50608.....2-208
GRAND JURY	20102.....2-211
HUMAN RESOURCES	2-217
□ Personnel Services	10401.....2-220
□ Insurance – Benefits	92003.....2-224
HEALTH & HUMAN SERVICES AGENCY	2-227
□ Health & Human Services Admin	50101.....2-232
□ SB 163 California Wraparound	40140.....2-236
DEPT. OF SOCIAL SERVICES	2-239
□ Social Services Admin	50102.....2-242
□ Adult Services Admin	50103.....2-246
□ In-Home Supportive Services	50206.....2-250
□ Child Welfare Services Admin	50104.....2-254
□ Child Welfare Services Assist	50204.....2-259



Table of Contents

□ Eligibility Services Admin	50105	2-260
□ Eligibility Services Asst	50205	2-265
□ Veterans Services	50501	2-266
□ Social Services Realignment	40118	2-270
BEHAVIORAL HEALTH		2-273
□ Behavioral Health Administration	40103	2-276
□ Children’s Behavioral Health	40104	2-280
□ Alcohol & Drug Programs	40105	2-284
□ Adult Behavioral Health	40110	2-288
□ Behavioral Health Realignment	40119	2-292
PUBLIC HEALTH		2-295
□ Public Health Administration	40101	2-298
□ Health & Wellness	40102	2-302
□ Emergency Medical & Preparedness	40107	2-306
□ County Medical Services Program	40109	2-310
□ Maternal & Child Health	40111	2-312
□ Clinical Services	40112	2-316
□ Public Health Nursing	40113	2-320
□ Public Health Realignment	40121	2-324
□ Health CCS Realignment	40129	2-326
INFORMATION & GENERAL SERVICES		2-329
□ IGS Administration	11003	2-332
□ Information Systems	11007	2-334
□ Geographic Information Systems	11008	2-338
□ Cable TV Services	11010	2-340
□ Purchasing	10204	2-342
□ Central Services	92004	2-344
□ Emergency Management	20702	2-346
□ Facilities Management	10702	2-350
□ Capital Facilities Projects	10801	2-352
LIBRARY	60201	2-355
NON-DEPARTMENTAL SERVICES		2-363
□ Annual Audit Service	10102	2-366
□ Other Financing Sources & Uses	10206	2-368
□ Trial Court Funding	10207	2-370
□ WWE Escrow Account	10209	2-372
□ Comm Fac Dist No. 1990-1 WWE	10210	2-374
□ Provision for Contingency	10212	2-376
□ MVLFF License Fees	10213	2-378
□ Building Debt Financing	10214	2-380
□ Criminal Justice Temp Fac Const	10803	2-382
□ Courthouse Construction Fund	10804	2-384
□ Historical Landmarks	11006	2-386
□ Other Debt Financing	11016	2-388
□ Conflict Indigent Defense	20111	2-390
□ Dispute Resolution Fund	20112	2-392
□ Public Safety Augmentation	20710	2-394
□ Conservation	60401	2-396
□ Dryden Wilson Bequest	70104	2-398
□ Risk Management Administration	11005	2-400
□ Insurance-Property & Casualty	11004	2-402



Table of Contents

□ Insurance-Workers' Compensation	11015	2-404
□ Insurance-General Liability	92002	2-406
□ Insurance-Probation Fire Insurance	11011	2-408
PROBATION		2-411
□ Probation	20320	2-414
□ Juvenile Hall	20310	2-418
□ Juvenile Hall Realignment	40122	2-422
PUBLIC DEFENDER	20107	2-425
SHERIFF		2-433
□ Sheriff Services	20201	2-436
□ Truckee Operations	20304	2-440
□ Court Security	20101	2-442
□ Corrections	20301	2-444
□ Inmate Medical Services	20302	2-448
□ Animal Control	20704	2-450
TREASURER/TAX COLLECTOR	10203	2-453

SECTION 3- INDEPENDENT COUNTY AUTHORITIES

Housing Authority	93001	3-1
Finance Authority	93010	3-7
Sanitation District No. 1		3-13
□ Sewage Collection & Disposal	91005	3-18
□ Sewer Assessment	91006	3-20

SECTION 4 – COUNTY RESOURCES

Staffing Changes		4-1
Capital Asset Expenditures		4-8
History of General Fund Balance and Reserves		4-10
Schedule of All Reserves		4-11
Schedule of Long Term Debt		4-12

SECTION 5 – FINAL RESOLUTIONS

Introduction		5-1
Resolution Adjusting Reserves for FY 2010/11		5-3
Resolution Adopting Final Budget Reserves for FY 2011/12		5-5
Resolution Adopting Final Budget for FY 2011/12		5-7
Resolution Adopting Final Housing Authority Budget for FY 2011/12		5-9
Resolution Adopting Final Budget for Sanitation District 1		5-10
Resolution Confirming Agreement for Allocation of Proposition 172 Revenues		5-12
Resolution Authorizing Personnel Salaries for FY 2011/12		5-15
Resolution Authorizing Personnel Staffing for FY 2011/12		5-86
Resolution Adopting the Nevada County Appropriations Limitation For FY 2011/12		5-102
Resolution Approving Transfer of Mental Health Realignment Revenues		5-103



Table of Contents

SECTION 6 – APPENDICES

Budget Development Process	6-1
Schedule of Revenue & Expenditure Budget Detail by Service Budget Unit & Fund....	6-2
Glossary of Budget Terms	6-9



Table of Contents

ALPHABETICAL LISTING BY SERVICE BUDGET UNIT

SERVICE	SERVICE BUDGET UNIT	PAGE NO.
Agricultural Services	20601	2-68
Adult Behavioral Health	40110	2-288
Adult Services Admin & Assistance	50103	2-246
Airport	91004	2-1
Alcohol & Drug Programs	40105	2-284
Animal Control	20704	2-450
Annual Audit Services	10102	2-366
Assessment Appeals Board	11001	2-30
Assessor	10201	2-9
Auditor/Controller	10202	2-15
Behavioral Health Administration	40103	2-276
Behavioral Health Realignment	40119	2-292
Building Debt Financing	10214	2-380
Building Inspection	20602	2-88
Cable TV Services	11010	2-340
Capital Facilities Projects	10801	2-352
Central Services	92004	2-344
Child Support Services	20109	2-36
Child Welfare Services	50104/50204	2-254
Children's Behavioral Health	40104	2-280
Clerk of the Board	10101	2-26
Clinical Services	40112	2-316
Code Compliance	20709	2-118
Collections	10205	2-40
Comm Fac Dist No. 1990-1 WWE	10210	2-374
Community Develop Agency Administration	20707	2-61
Community Services	50602	2-126
Conflict Indigent Defense	20111	2-390
Conservation	60401	2-396
Corrections	20301	2-444
County Counsel	10301	2-185
County Executive Office	10103	2-193
County Medical Services Program	40109	2-310
Court Security	20101	2-442
Courthouse Construction Fund	10804	2-384
Criminal Justice Temp Fac Const	10803	2-382
CSA / PRD	30103	2-164



Table of Contents

Dispute Resolution Fund	20112	2-392
District Attorney	20103	2-204
DPW Administration	30100	2-146
Dryden Wilson Bequest	70104	2-398
Economic Development	10902	2-138
Elections	10501	2-50
Electrical Service Availability	30120	2-90
Eligibility Services	50105/50205	2-260
Emergency Management	20702	2-346
Emergency Medical & Preparedness	40107	2-306
Energy Assistance	50603	2-128
Environmental Health	40108	2-96
Environmental Health Realignment	40120	2-100
Facilities Management	10702	2-350
Farm Advisor	60301	2-77
Finance Authority	93010	3-9
Fish & Wildlife	20705	2-74
Fleet Management	92001	2-166
Fleet Services	92005	2-168
Geographic Information Systems	11008	2-338
Grand Jury	20102	2-211
Health CCS Realignment	40129	2-326
Health & Wellness	40102	2-302
Historical Landmarks	11006	2-386
Homebuyer Assistance	50604	2-132
Housing Authority	93001	3-1
Housing Development & Rehabilitation	50605	2-134
Housing Services Administration	50601	2-122
Human Services Agency Administration	50101	2-232
IGS Administration	11003	2-332
Information Systems	11007	2-334
In-Home Supportive Services	50206	2-250
Inmate Medical Services	20302	2-448
Insurance – Benefits	92003	2-224
Insurance-General Liability	92002	2-406
Insurance-Probation Fire Claim	11011	2-408
Insurance-Property & Casualty	11004	2-402
Insurance-Worker’s Compensation	11015	2-404
Juvenile Hall	20310	2-418
Juvenile Hall Realignment	40122	2-422
Library	60201	2-355
Maternal & Child Health	40111	2-312
Mitigation Funds	30102	2-162
MVLF License Fees	10213	2-378



Table of Contents

Other Debt Financing	11016	2-388
Other Financing Sources & Uses	10206	2-368
Personnel Services	10401	2-220
Planning	20708	2-112
Probation	20320	2-411
Provision for Contingency	10212	2-376
Public Defender	20107	2-425
Public Health Administration	40101	2-298
Public Health Nursing	40113	2-320
Public Health Realignment	40121	2-324
Public Safety Augmentation	20710	2-394
Purchasing	10204	2-342
Recorder	20701	2-48
Recreation Mitigation Fees	70101	2-116
Risk Management Administration	11005	2-400
Roads Administration	30101	2-148
Roads – Capital Improvements	30154	2-154
Roads - Engineering	30104	2-150
Roads - Maintenance	30107	2-158
SB 163 California Wraparound Program	40140	2-236
Sewage Collection & Disposal	91005	3-18
Sewer Assessment	91006	3-20
Sheriff Services	20201	2-436
Social Services Administration	50102	2-242
Social Services Realignment	40118	2-270
Solid Waste –Eastern	91002	2-180
Solid Waste - Oil	40401	2-182
Solid Waste-Western	91001	2-176
Surveyor	11009	2-160
Transit Self-Insurance	11012	2-174
Transit Services	91003	2-170
Treasurer/Tax Collector	10203	2-453
Trial Court Funding	10207	2-370
Truckee Operations	20304	2-440
Vector Control	40123	2-102
Veterans Services	50501	2-266
Victim/Witness	50608	2-208
Weights & Measure	20603	2-72
WWE Escrow Account	10209	2-372

