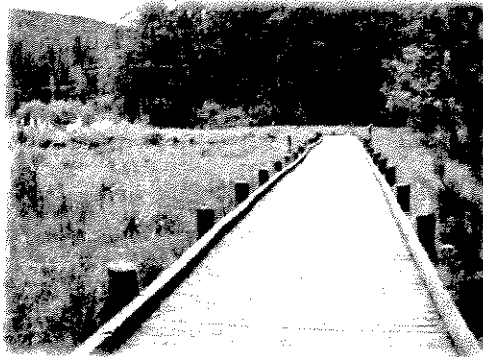
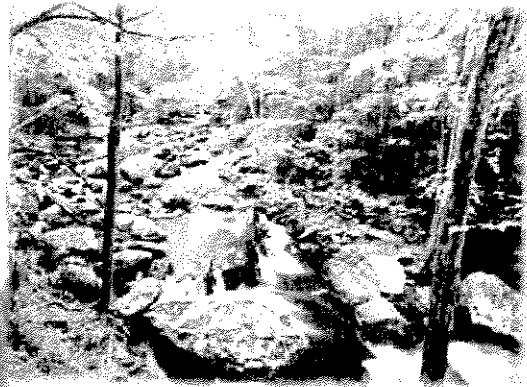
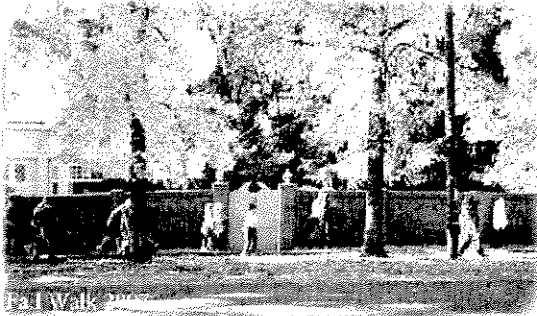


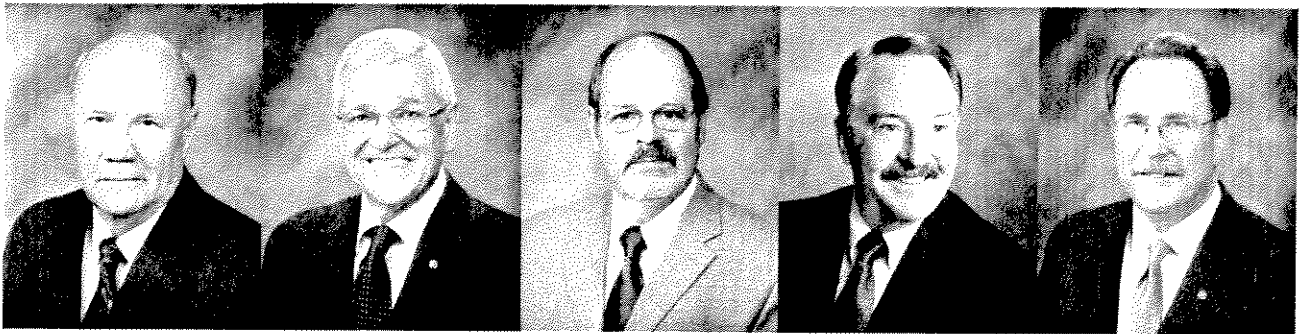
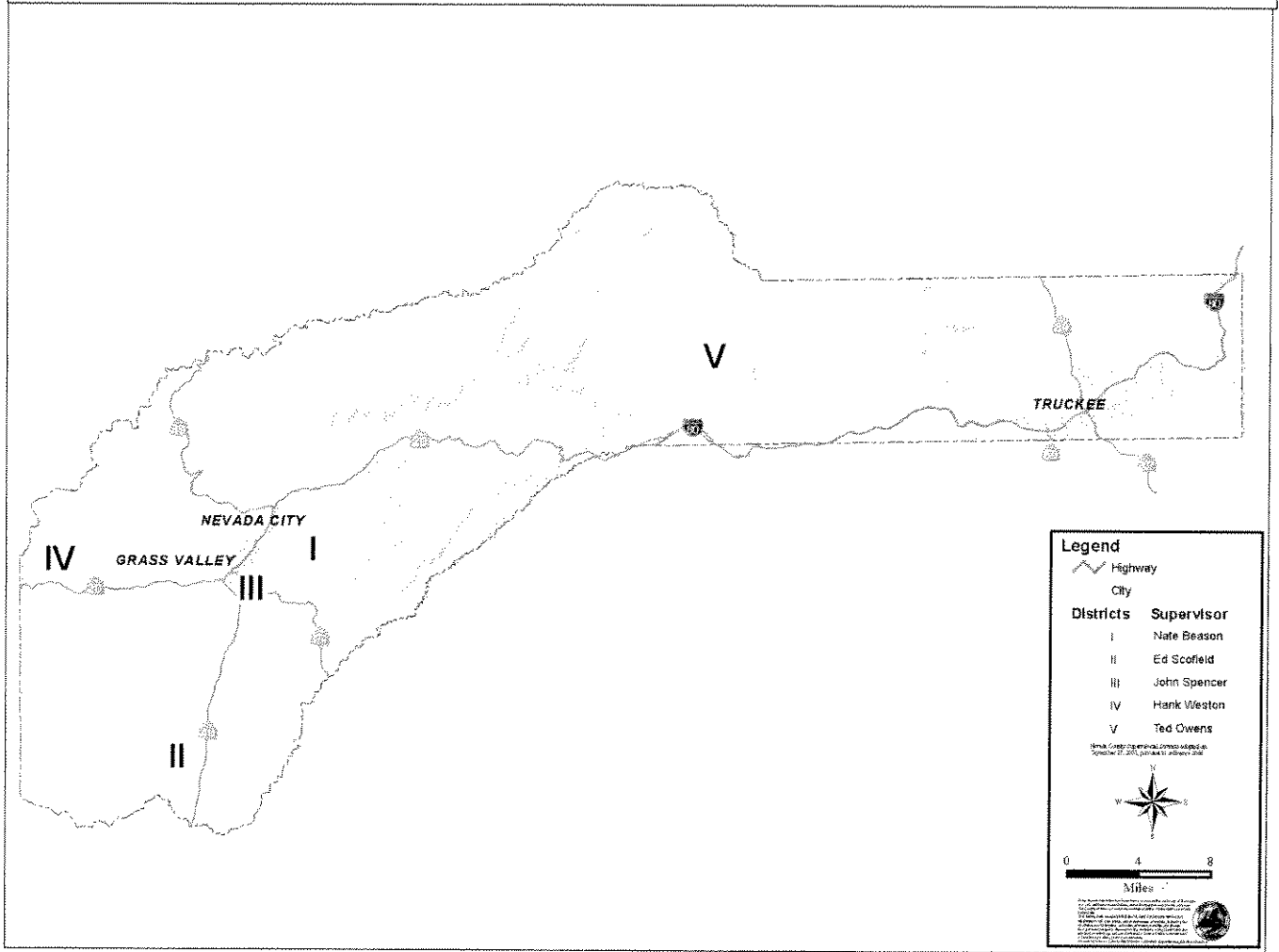
Nevada County

Final Budget Fiscal Year 2009-10



*Prepared by Nevada County
Executive Office*

NEVADA COUNTY, CALIFORNIA SUPERVISORIAL DISTRICTS



District 1
Nate Beason

District 2
Ed Scofield

District 3
John Spencer

District 4
Hank Weston
Chair

District 5
Ted Owens

Table of Contents

READER'S GUIDE	Page
Reader's Guide	I

SECTION 1 - EXECUTIVE SUMMARY

Message from the County Executive Officer	1-1
Key Accomplishments for 2008-2009	1-5
County Vision, Mission, Values, Goals	1-9
Demographics & County Community Profile	1-10
County Organizational Chart	1-14
Revenues by Source	1-15
General Fund Discretionary Revenues	1-16
Discretionary Revenues Per Capita	1-17
Expenditures by Cost Category	1-18
Expenditures by Function	1-19
General Government	1-20
Public Protection	1-21
Public Ways & Facilities	1-22
Health & Sanitation	1-23
Public Assistance	1-24
Education, Recreation & Culture	1-25
Enterprises	1-26
Internal Services	1-27
Historical Budget Trend	1-28
County Staffing Relative to Population Growth	1-29
Budget Summary by Fund	1-30
Changes in General Fund Balance & Reserves	1-33

SECTION 2 – BUDGET SUMMARIES BY OFFICE /AGENCY/DEPARTMENT **Service Budget Unit**

AIRPORT	91004	2-1
ASSESSOR	10201	2-9
AUDITOR/CONTROLLER	10202	2-15
BOARD OF SUPERVISORS	2-23
□ Clerk of the Board	10101	2-26
□ Assessment Appeals Board	11001	2-30
CHILD SUPPORT SERVICES	2-33
□ Child Support Services	20109	2-36
□ Collections	10205	2-42
CLERK-RECORDER	2-45
□ Recorder	20701	2-48
□ Elections	10501	2-50
COMMUNITY DEVELOPMENT AGENCY	2-53
□ CDA Administration	20707	2-59
AGRICULTURAL COMMISSIONER	2-63
□ Agriculture Services	20601	2-66
□ Weights & Measure	20603	2-70
□ Fish & Wildlife	20705	2-74
FARM ADVISOR	60301	2-77



Table of Contents

BUILDING INSPECTION	2-85
□ Building Inspection	20602 2-88
ENVIRONMENTAL HEALTH	2-91
□ Environmental Health	40108 2-94
□ Environmental Health Realignment	40120 2-98
□ Vector Control	40123 2-100
PLANNING	2-105
□ Planning	20708 2-110
□ Recreation Mitigation Fees	70101 2-114
□ Electrical Service Availability	30120 2-116
□ Code Compliance	20709 2-118
□ Surveying	11009 2-122
□ Housing Services Administration	50601 2-124
□ Community Services	50602 2-128
□ Energy Assistance	50603 2-130
□ Homebuyer Assistance	50604 2-134
□ Housing Development & Rehab	50605 2-138
□ Economic Development	10902 2-142
PUBLIC WORKS	2-147
□ Roads Administration	30101 2-152
□ Roads – Engineering	30104 2-156
□ Roads – Capital Improvements	30154 2-160
□ Roads – Maintenance	30107 2-164
□ Mitigation Funds	30102 2-168
□ CSA / PRD	30103 2-170
□ Fleet Management	92001 2-172
□ Fleet Services	92005 2-174
□ Transit Services	91003 2-176
□ Transit Self-Insurance	11012 2-178
SOLID WASTE	2-181
□ Solid Waste-Western	91001 2-184
□ Solid Waste –Eastern	91002 2-188
□ Recycled Oil Block Grant	40401 2-190
COUNTY COUNSEL	10301 2-193
COUNTY EXECUTIVE OFFICE	10103 2-201
DISTRICT ATTORNEY	20103 2-209
GRAND JURY	20102 2-217
HUMAN RESOURCES	2-223
□ Personnel Services	10401 2-226
□ Insurance – Benefits	92003 2-230
□ Insurance-Property & Casualty	11004 2-232
□ Insurance-Probation Fire Claim	11011 2-234
□ Insurance-Worker’s Compensation	11015 2-236
□ Insurance-General Liability	92002 2-240
HEALTH & HUMAN SERVICES AGENCY	2-243
□ Human Services Administration	50101 2-248
DEPT. OF SOCIAL SERVICES	2-253
□ Social Services Admin	50102 2-256
□ Adult Services Admin	50103 2-260
□ In-Home Supportive Services	50206 2-264
□ Child Welfare Services Admin	50104 2-268



Table of Contents

□ Child Welfare Services Assist	50204	2-273
□ Eligibility Services Admin	50105	2-274
□ Eligibility Services Asst	50205	2-279
□ Veterans Services	50501	2-280
□ Social Services Realignment	40118	2-282
BEHAVIORAL HEALTH		2-285
□ Behavioral Health Administration	40103	2-288
□ Children's Behavioral Health	40104	2-292
□ Alcohol & Drug Programs	40105	2-296
□ Adult Behavioral Health	40110	2-300
□ Behavioral Health Realignment	40119	2-304
PUBLIC HEALTH		2-307
□ Public Health Administration	40101	2-310
□ Health Education	40102	2-314
□ Emergency Medical & Preparedness	40107	2-318
□ County Medical Services Program	40109	2-322
□ Maternal & Child Health	40111	2-324
□ Clinical Services	40112	2-328
□ Public Health Nursing	40113	2-332
□ Public Health Realignment	40121	2-336
□ Health CCS Realignment	40129	2-338
INFORMATION & GENERAL SERVICES		2-341
□ Information Systems	11007	2-344
□ Geographic Information Systems	11008	2-348
□ Cable TV Services	11010	2-350
□ Purchasing	10204	2-352
□ Central Services	92004	2-356
□ Emergency Management	20702	2-358
□ Facilities Management	10702	2-362
□ Capital Facilities Projects	10801	2-364
LIBRARY	60201	2-367
NON-DEPARTMENTAL SERVICES		2-375
□ Annual Audit Service	10102	2-378
□ Other Financing Sources & Uses	10206	2-380
□ Trial Court Funding	10207	2-382
□ WWE Escrow Account	10209	2-384
□ Comm Fac Dist No. 1990-1 WWE	10210	2-386
□ Provision for Contingency	10212	2-388
□ MVLFF License Fees	10213	2-390
□ Building Debt Financing	10214	2-392
□ Criminal Justice Temp Fac Const	10803	2-394
□ Courthouse Construction Fund	10804	2-396
□ Historical Landmarks	11006	2-398
□ Other Debt Financing	11016	2-400
□ Conflict Indigent Defense	20111	2-402
□ Dispute Resolution Fund	20112	2-404
□ Public Safety Augmentation	20710	2-406



Table of Contents

□ Conservation	60401	2-408
□ Dryden Wilson Bequest	70104	2-410
PROBATION		2-413
□ Probation	20320	2-416
□ Juvenile Hall	20310	2-420
□ Victim/Witness	50608	2-422
□ Juvenile Hall Realignment	40122	2-426
PUBLIC DEFENDER	20107	2-429
SHERIFF		2-437
□ Sheriff Services	20201	2-440
□ Truckee Operations	20304	2-444
□ Corrections	20301	2-446
□ Court Security	20101	2-450
□ Inmate Medical Services	20302	2-454
□ Animal Control	20704	2-456
TREASURER/TAX COLLECTOR	10203	2-461

SECTION 3- INDEPENDENT COUNTY AUTHORITIES

Housing Authority	93001	3-1
Finance Authority	93010	3-9
Sanitation District No. 1		3-15
□ Sewage Collection & Disposal	91005	3-18
□ Sewer Assessment	91006	3-22

SECTION 4 – COUNTY RESOURCES

Staffing Changes	4-1
Capital Asset Expenditures	4-9
History of General Fund Balance and Reserves	4-11
Schedule of All Reserves	4-12
Schedule of Long Term Debt	4-13

SECTION 5 – FINAL RESOLUTIONS

Introduction	5-1
Resolution Adjusting Reserves for FY 2008/09	5-3
Resolution Adopting Final Budget Reserves for FY 2009/10	5-5
Resolution Adopting Final Budget for FY 2009/10	5-7
Resolution Adopting Final Housing Authority Budget for FY 2009/10	5-9
Resolution Confirming Agreement for Allocation of Proposition 172 Revenues	5-10
Resolution Authorizing Personnel Salaries for FY 2009/10	5-13
Resolution Authorizing Personnel Staffing for FY 2009/10	5-54
Resolution Adopting the Nevada County Appropriations Limitation For FY 2009/10	5-70
Resolution Approving Transfer of Mental Health Realignment Revenues	5-71
Resolution to Close Property Tax Administration Grant Fund #1140	5-73



Table of Contents

SECTION 6 – APPENDICES

Budget Development Process	6-1
Schedule of Revenue & Expenditure Budget Detail by Service Budget Unit & Fund ...	6-2
Glossary of Budget Terms	6-9



Table of Contents

ALPHABETICAL LISTING BY SERVICE BUDGET UNIT

SERVICE	SERVICE BUDGET UNIT	PAGE NO.
Agricultural Services	20601	2-63
Adult Behavioral Health	40110	2-300
Adult Services Admin & Assistance	50103	2-260
Airport	91004	2-1
Alcohol & Drug Programs	40105	2-296
Animal Control	20704	2-456
Annual Audit Services	10102	2-378
Assessment Appeals Board	11001	2-30
Assessor	10201	2-9
Auditor/Controller	10202	2-15
Behavioral Health Administration	40103	2-288
Behavioral Health Realignment	40119	2-304
Building Debt Financing	10214	2-392
Building Inspection	20602	2-85
Cable TV Services	11010	2-350
Capital Facilities Projects	10801	2-364
Central Services	92004	2-356
Child Support Services	20109	2-33
Child Welfare Services	50104/50204	2-268
Children's Behavioral Health	40104	2-292
Clerk of the Board	10101	2-26
Clinical Services	40112	2-328
Code Compliance	20709	2-118
Comm Fac Dist No. 1990-1 WWE	10210	2-386
Community Develop Agency Administration	20707	2-59
Community Services	50602	2-128
Conflict Indigent Defense	20111	2-402
Conservation	60401	2-408
Corrections	20301	2-446
County Counsel	10301	2-193
County Executive Office	10103	2-201
County Medical Services Program	40109	2-322
Court Security	20101	2-450
Courthouse Construction Fund	10804	2-396
Criminal Justice Temp Fac Const	10803	2-394
CSA / PRD	30103	2-170
Dispute Resolution Fund	20112	2-404



Table of Contents

District Attorney	20103	2-209
Dryden Wilson Bequest	70104	2-410
Economic Development	10902	2-142
Elections	10501	2-50
Eligibility Services	50105/50205	2-274
Emergency Management	20702	2-358
Emergency Medical & Preparedness	40107	2-318
Energy Assistance	50603	2-130
Environmental Health	40108	2-94
Environmental Health Realignment	40120	2-98
Facilities Management	10702	2-362
Farm Advisor	60301	2-77
Finance Authority	93010	3-9
Fish & Wildlife	20705	2-74
Fleet Management	92001	2-172
Fleet Services	92005	2-174
Geographic Information Systems	11008	2-348
Grand Jury	20102	2-217
Health CCS Realignment	40129	2-338
Health Education	40102	2-314
Historical Landmarks	11006	2-398
Homebuyer Assistance	50604	2-134
Housing Authority	93001	3-1
Housing Development & Rehabilitation	50605	2-138
Housing Services Administration	50601	2-124
Human Services Agency Administration	50101	2-248
Information Systems	11007	2-344
In-Home Supportive Services	50206	2-264
Inmate Medical Services	20302	2-454
Insurance – Benefits	92003	2-230
Insurance-General Liability	92002	2-240
Insurance-Probation Fire Claim	11011	2-234
Insurance-Property & Casualty	11004	2-232
Insurance-Worker’s Compensation	11015	2-236
Juvenile Hall	20310	2-420
Juvenile Hall Realignment	40122	2-426
Library	60201	2-367
Maternal & Child Health	40111	2-324
Mitigation Funds	30102	2-168
MVLF License Fees	10213	2-390
Other Debt Financing	11016	2-400
Other Financing Sources & Uses	10206	2-380
Personnel Services	10401	2-226
Planning	20708	2-110



Table of Contents

Probation	20320	2-416
Provision for Contingency	10212	2-388
Public Defender	20107	2-429
Public Health Administration	40101	2-310
Public Health Nursing	40113	2-332
Public Health Realignment	40121	2-336
Public Safety Augmentation	20710	2-406
Purchasing	10204	2-352
Recorder	20701	2-48
Recreation Mitigation Fees	70101	2-114
Recycled Oil Block Grant	40401	2-190
Roads Administration	30101	2-152
Roads – Capital Improvements	30154	2-160
Roads - Engineering	30104	2-156
Roads - Maintenance	30107	2-164
Sewage Collection & Disposal	91005	3-18
Sewer Assessment	91006	3-22
Sheriff Services	20201	2-440
Social Services Administration	50102	2-256
Social Services Realignment	40118	2-282
Solid Waste –Eastern	91002	2-188
Solid Waste-Western	91001	2-184
Surveying	11009	2-122
Transit Self-Insurance	11012	2-178
Transit Services	91003	2-176
Treasurer/Tax Collector	10203	2-461
Trial Court Funding	10207	2-382
Truckee Operations	20304	2-444
Vector Control	40123	2-100
Veterans Services	50501	2-280
Victim/Witness	50608	2-422
Weights & Measure	20603	2-70
WWE Escrow Account	10209	2-384

