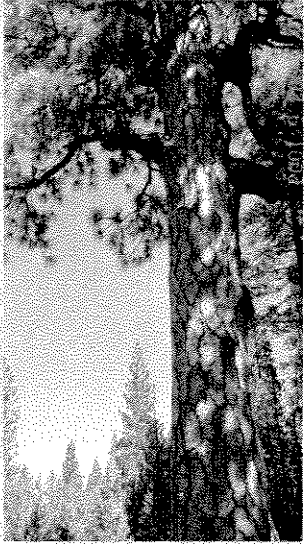
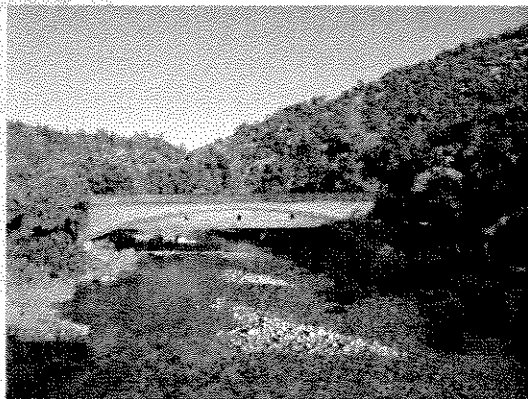


County of Nevada



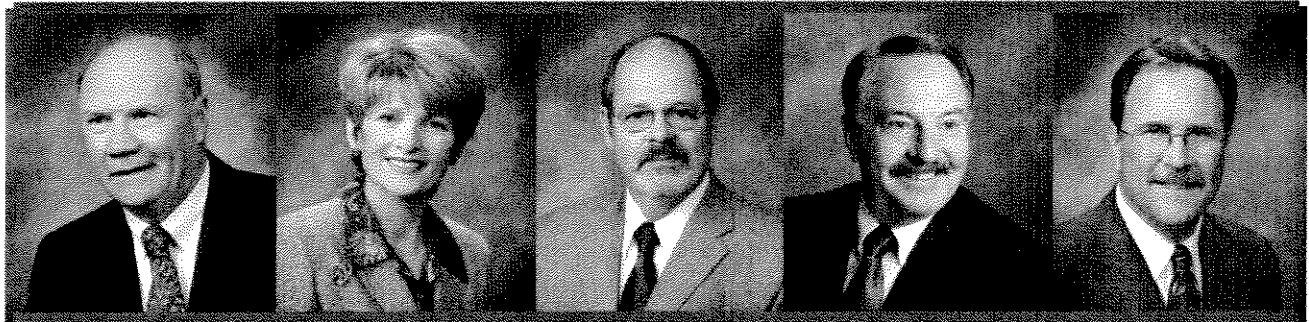
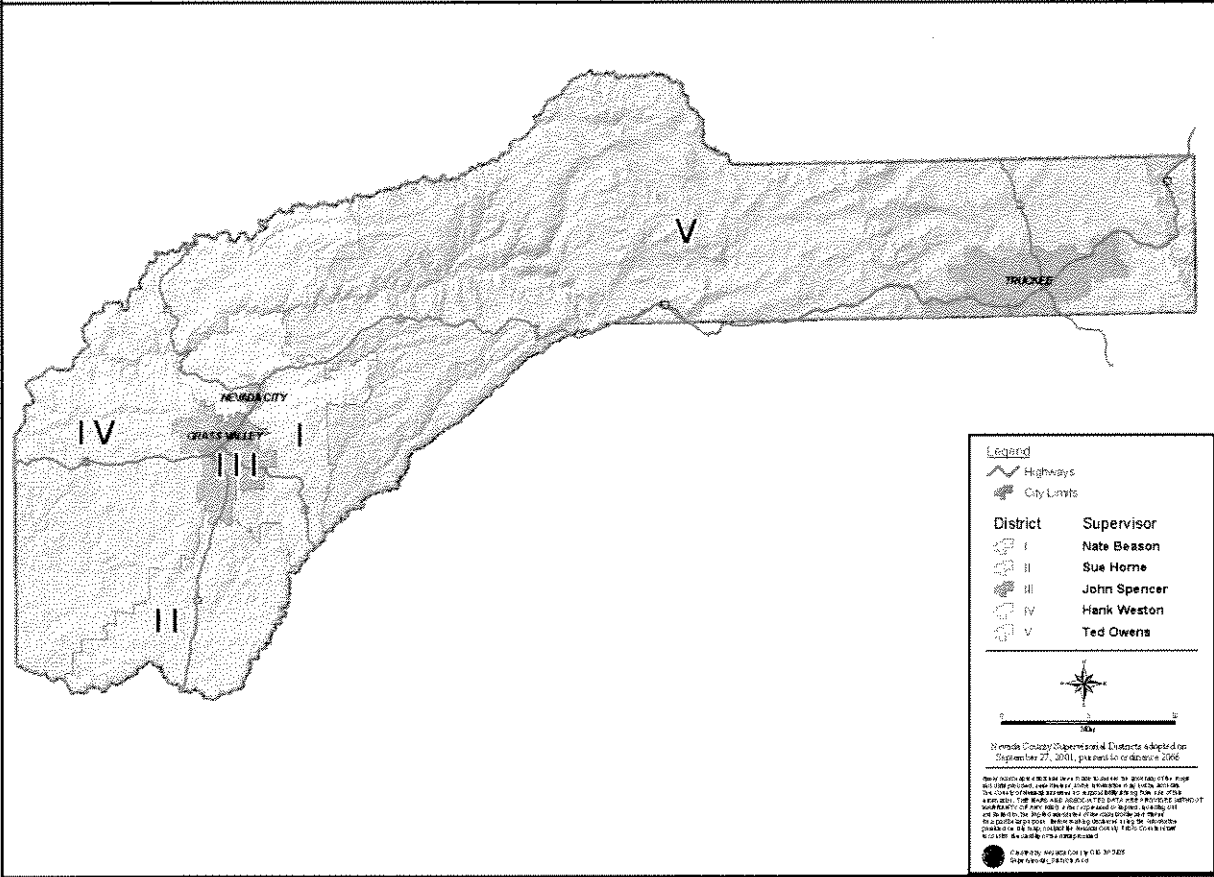
FINAL BUDGET

*Fiscal Year
2008/2009*



Prepared by Nevada County Executive Office

Nevada County, CA - Supervisorial Districts



District I
Nate Beason

District II
Sue Horne

District III
*John
Spencer*

District IV
Hank Weston

District V
*Ted Owens
Chair*

Table of Contents

READER'S GUIDE	Page
Reader's Guide	I

SECTION 1 - EXECUTIVE SUMMARY

Message from the County Executive Officer	1-1
Key Accomplishments for 2007-2008	1-4
County Vision, Mission, Values, Goals	1-7
Demographics & County Community Profile.....	1-8
County Organizational Chart	1-12
Revenues by Source	1-13
General Fund Discretionary Revenues.....	1-14
Discretionary Revenues Per Capita.....	1-15
Expenditures by Cost Category.....	1-16
Expenditures by Function.....	1-17
General Government	1-18
Public Protection	1-19
Public Ways & Facilities.....	1-20
Health & Sanitation.....	1-21
Public Assistance	1-22
Education.....	1-23
Recreation & Culture	1-24
Enterprises.....	1-25
Internal Services.....	1-26
Historical Budget Trend	1-27
County Staffing Relative to Population Growth	1-28
Budget Summary by Fund	1-29
Changes in General Fund Balance & Reserves.....	1-32

SECTION 2 – BUDGET SUMMARIES BY OFFICE /AGENCY/DEPARTMENT **Service Budget Unit**

AIRPORT	91004	2-1
ASSESSOR	10201	2-9
AUDITOR/CONTROLLER	10202	2-15
BOARD OF SUPERVISORS	2-23
□ Clerk of the Board	10101	2-26
□ Assessment Appeals Board	11001	2-30
CHILD SUPPORT SERVICES	2-33
□ Child Support Services	20109	2-36
□ Collections	10205	2-40
CLERK-RECORDER	2-43
□ Recorder	20701	2-46
□ Elections	10501	2-48
COMMUNITY DEVELOPMENT AGENCY	2-51
□ CDA Administration	20707	2-58
AGRICULTURAL COMMISSIONER	2-61
□ Agriculture Services	20601	2-64
□ Weights & Measure	20603	2-68
□ Fish & Wildlife	20705	2-70



Table of Contents

BUILDING INSPECTION	2-73
□ Building Inspection	206022-76
ENVIRONMENTAL HEALTH2-79
□ Environmental Health	401082-82
□ Environmental Health Realignment	401202-86
□ Vector Control	401232-88
PLANNING2-91
□ Planning	207082-96
□ Recreation Mitigation Fees	701012-100
□ Code Compliance	207092-102
□ Surveying	110092-106
□ Housing Services Administration	506012-108
□ Community Services	506022-112
□ Energy Assistance	506032-114
□ Homebuyer Assistance	506042-118
□ Housing Development & Rehab	506052-120
□ Economic Development	109022-124
PUBLIC WORKS2-129
□ Roads Administration	301012-134
□ Roads – Engineering	301042-136
□ Roads – Capital Improvements	301542-140
□ Roads – Non County	301062-144
□ Roads – Maintenance	301072-146
□ Mitigation Funds	301022-148
□ CSA / PRD	301032-150
□ Fleet Management	920012-152
□ Fleet Services	920052-154
□ Transit Services	910032-156
□ Transit Self-Insurance	110122-158
SOLID WASTE2-161
□ Solid Waste-Western	910012-164
□ Solid Waste –Eastern	910022-168
□ Recycled Oil Block Grant	404012-170
COUNTY COUNSEL	103012-173
COUNTY EXECUTIVE OFFICE	101032-181
DISTRICT ATTORNEY	201032-189
FARM ADVISOR	603012-197
GRAND JURY	201022-205
HUMAN RESOURCES2-211
□ Personnel Services	104012-214
□ Insurance – Benefits	920032-218
□ Insurance-Property & Casualty	110042-220
□ Insurance-Probation Fire Claim	110112-222
□ Insurance-Worker’s Compensation	110152-224
□ Insurance-General Liability	920022-228
HEALTH & HUMAN SERVICES AGENCY2-231
□ Human Services Administration	501012-236
DEPT. OF SOCIAL SERVICES2-241
□ Social Services Admin	501022-244
□ Adult Services Admin	501032-248



Table of Contents

□ In-Home Supportive Services	50206	2-252
□ Child Welfare Services Admin	50104	2-256
□ Child Welfare Services Assist	50204	2-261
□ Eligibility Services Admin	50105	2-262
□ Eligibility Services Asst	50205	2-267
□ Veterans Services	50501	2-268
□ Social Services Realignment	40118	2-272
BEHAVIORAL HEALTH		2-275
□ Behavioral Health Administration	40103	2-278
□ Children's Behavioral Health	40104	2-282
□ Alcohol & Drug Programs	40105	2-286
□ Adult Behavioral Health	40110	2-290
□ Behavioral Health Realignment	40119	2-294
PUBLIC HEALTH		2-297
□ Public Health Administration	40101	2-300
□ Health Education	40102	2-304
□ Emergency Medical & Preparedness	40107	2-308
□ County Medical Services Program	40109	2-312
□ Maternal & Child Health	40111	2-314
□ Clinical Services	40112	2-318
□ Public Health Nursing	40113	2-322
□ Public Health Realignment	40121	2-326
□ Health CCS Realignment	40129	2-328
INFORMATION & GENERAL SERVICES		2-331
□ Information Systems	11007	2-334
□ Geographic Information Systems	11008	2-338
□ Cable TV Services	11010	2-342
□ Purchasing	10204	2-344
□ Central Services	92004	2-348
□ Emergency Management	20702	2-350
□ Facilities Management	10702	2-354
□ Capital Facilities Projects	10801	2-356
LIBRARY	60201	2-359
NON-DEPARTMENTAL SERVICES		2-367
□ Annual Audit Service	10102	2-370
□ Other Financing Sources & Uses	10206	2-372
□ Trial Court Funding	10207	2-374
□ WWE Escrow Account	10209	2-376
□ Comm Fac Dist No. 1990-1 WWE	10210	2-378
□ Provision for Contingency	10212	2-380
□ MVLFF License Fees	10213	2-382
□ Building Debt Financing	10214	2-384
□ Criminal Justice Temp Fac Const	10803	2-386
□ Courthouse Construction Fund	10804	2-388
□ Historical Landmarks	11006	2-390
□ Other Debt Financing	11016	2-392
□ Conflict Indigent Defense	20111	2-394
□ Dispute Resolution Fund	20112	2-396
□ Public Safety Augmentation	20710	2-398
□ Conservation	60401	2-400
□ Dryden Wilson Bequest	70104	2-402



Table of Contents

PROBATION	2-405
▫ Probation	20320 2-408
▫ Juvenile Hall	20310 2-412
▫ Victim/Witness	50608 2-414
▫ Juvenile Hall Realignment	40122 2-418
PUBLIC DEFENDER	20107 2-421
SHERIFF 2-429
▫ Sheriff Services	20201 2-432
▫ Truckee Operations	20304 2-436
▫ Corrections	20301 2-438
▫ Court Security	20101 2-442
▫ Inmate Medical Services	20302 2-446
▫ Animal Control	20704 2-448
TREASURER/TAX COLLECTOR	10203 2-451

SECTION 3- INDEPENDENT COUNTY AUTHORITIES

Housing Authority	93001 3-1
Finance Authority	93010 3-9
Sanitation District No. 1 3-15
▫ Sewage Collection & Disposal	91005 3-18
▫ Sewer Assessment	91006 3-22

SECTION 4 – COUNTY RESOURCES

Staffing Changes 4-1
Capital Asset Expenditures 4-9
History of General Fund Balance and Reserves 4-11
Schedule of All Reserves 4-12
Schedule of Long Term Debt 4-13

SECTION 5 – FINAL RESOLUTIONS

Introduction 5-1
Resolution Adjusting Reserves for FY 2007/08 5-3
Resolution Adopting Final Budget Reserves for FY 2008/09 5-5
Resolution Adopting Final Budget for FY 2008/09 5-7
Resolution Adopting Final Housing Authority Budget for FY 2008/09 5-9
Resolution Confirming Agreement for Allocation of Proposition 172 Revenues 5-10
Resolution Authorizing Personnel Salaries for FY 2008/09 5-13
Resolution Authorizing Personnel Staffing for FY 2008/09 5-56
Resolution Adopting the Nevada County Appropriations Limitation For FY 2008/09 5-74
Resolution Approving Transfer of Social Services Realignment Revenues 5-75
Resolution Creating Special Revenue Fund for the CDA Agency Administration 5-77
Resolution to Close Local Law Enforcement Block Grant Fund #1646 5-78



Table of Contents

SECTION 6 – APPENDICES

Budget Development Process	6-1
Schedule of Revenue & Expenditure Budget Detail by Service Budget Unit & Fund	6-2
Glossary of Budget Terms	6-8



Table of Contents

ALPHABETICAL LISTING BY SERVICE BUDGET UNIT

SERVICE	SERVICE BUDGET UNIT	PAGE NO.
Agricultural Services	20601	2-64
Adult Behavioral Health	40110	2-290
Adult Services Admin & Assistance	50103	2-248
Airport	91004	2-1
Alcohol & Drug Programs	40105	2-286
Animal Control	20704	2-448
Annual Audit Services	10102	2-370
Assessment Appeals Board	11001	2-30
Assessor	10201	2-9
Auditor/Controller	10202	2-15
Behavioral Health Administration	40103	2-278
Behavioral Health Realignment	40119	2-294
Building Debt Financing	10214	2-384
Building Inspection	20602	2-76
Cable TV Services	11010	2-342
Capital Facilities Projects	10801	2-356
Central Services	92004	2-348
Child Support Services	20109	2-36
Child Welfare Services	50104/50204	2-256
Children's Behavioral Health	40104	2-282
Clerk of the Board	10101	2-26
Clinical Services	40112	2-318
Code Compliance	20709	2-102
Comm Fac Dist No. 1990-1 W	10210	2-378
Community Develop Agency Administration	20707	2-58
Community Services	50602	2-112
Conflict Indigent Defense	20111	2-394
Conservation	60401	2-400
Corrections	20301	2-438
County Counsel	10301	2-173
County Executive Office	10103	2-181
County Medical Services Program	40109	2-312
Court Security	20101	2-442
Courthouse Construction Fund	10804	2-388
Criminal Justice Temp Fac Const	10803	2-386



Table of Contents

CSA / PRD	30103	2-150
Dispute Resolution Fund	20112	2-396
District Attorney	20103	2-189
Dryden Wilson Bequest	70104	2-402
Economic Development	10902	2-124
Elections	10501	2-48
Eligibility Services	50105/50205	2-262
Emergency Management	20702	2-350
Emergency Medical & Preparedness	40107	2-308
Energy Assistance	50603	2-114
Environmental Health	40108	2-79
Environmental Health Realignment	40120	2-82
Facilities Management	10702	2-86
Farm Advisor	60301	2-354
Finance Authority	93010	3-9
Fish & Wildlife	20705	2-70
Fleet Management	92001	2-152
Fleet Services	92005	2-154
Geographic Information Systems	11008	2-338
Grand Jury	20102	2-205
Health CCS Realignment	40129	2-328
Health Education	40102	2-304
Historical Landmarks	11006	2-390
Homebuyer Assistance	50604	2-118
Housing Authority	93001	3-1
Housing Development & Rehabilitation	50605	2-120
Housing Services Administration	50601	2-108
Human Services Agency Administration	50101	2-236
Information Systems	11007	2-334
In-Home Supportive Services	50206	2-252
Inmate Medical Services	20302	2-446
Insurance – Benefits	92003	2-218
Insurance-General Liability	92002	2-228
Insurance-Probation Fire Claim	11011	2-222
Insurance-Property & Casualty	11004	2-220
Insurance-Worker’s Compensation	11015	2-224
Juvenile Hall	20310	2-412
Juvenile Hall Realignment	40122	2-418
Library	60201	2-359
Maternal & Child Health	40111	2-314
Mitigation Funds	30102	2-148
MVLF License Fees	10213	2-382
Other Debt Financing	11016	2-392
Other Financing Sources & Uses	10206	2-372



Table of Contents

Personnel Services	10401	2-214
Planning	20708	2-96
Probation	20320	2-408
Provision for Contingency	10212	2-380
Public Defender	20107	2-421
Public Health Administration	40101	2-300
Public Health Nursing	40113	2-322
Public Health Realignment	40121	2-326
Public Safety Augmentation	20710	2-398
Purchasing	10204	2-344
Recorder	20701	2-46
Recreation Mitigation Fees	70101	2-100
Recycled Oil Block Grant	40401	2-170
Roads Administration	30101	2-134
Roads – Capital Improvements	30154	2-140
Roads - Engineering	30104	2-136
Roads - Maintenance	30107	2-146
Roads – Non County	30106	2-144
Sewage Collection & Disposal	91005	3-18
Sewer Assessment	91006	3-22
Sheriff Services	20201	2-432
Social Services Administration	50102	2-244
Social Services Realignment	40118	2-272
Solid Waste –Eastern	91002	2-168
Solid Waste-Western	91001	2-164
Surveying	11009	2-106
Transit Self-Insurance	11012	2-158
Transit Services	91003	2-156
Treasurer/Tax Collector	10203	2-451
Trial Court Funding	10207	2-374
Truckee Operations	20304	2-436
Vector Control	40123	2-88
Veterans Services	50501	2-268
Victim/Witness	50608	2-414
Weights & Measure	20603	2-68
WWE Escrow Account	10209	2-376

