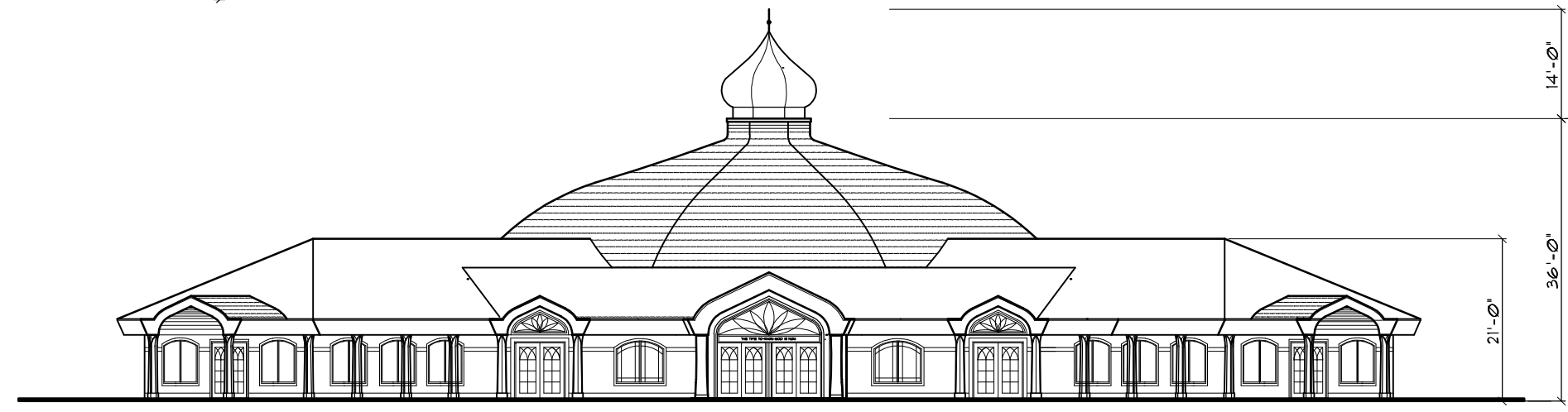
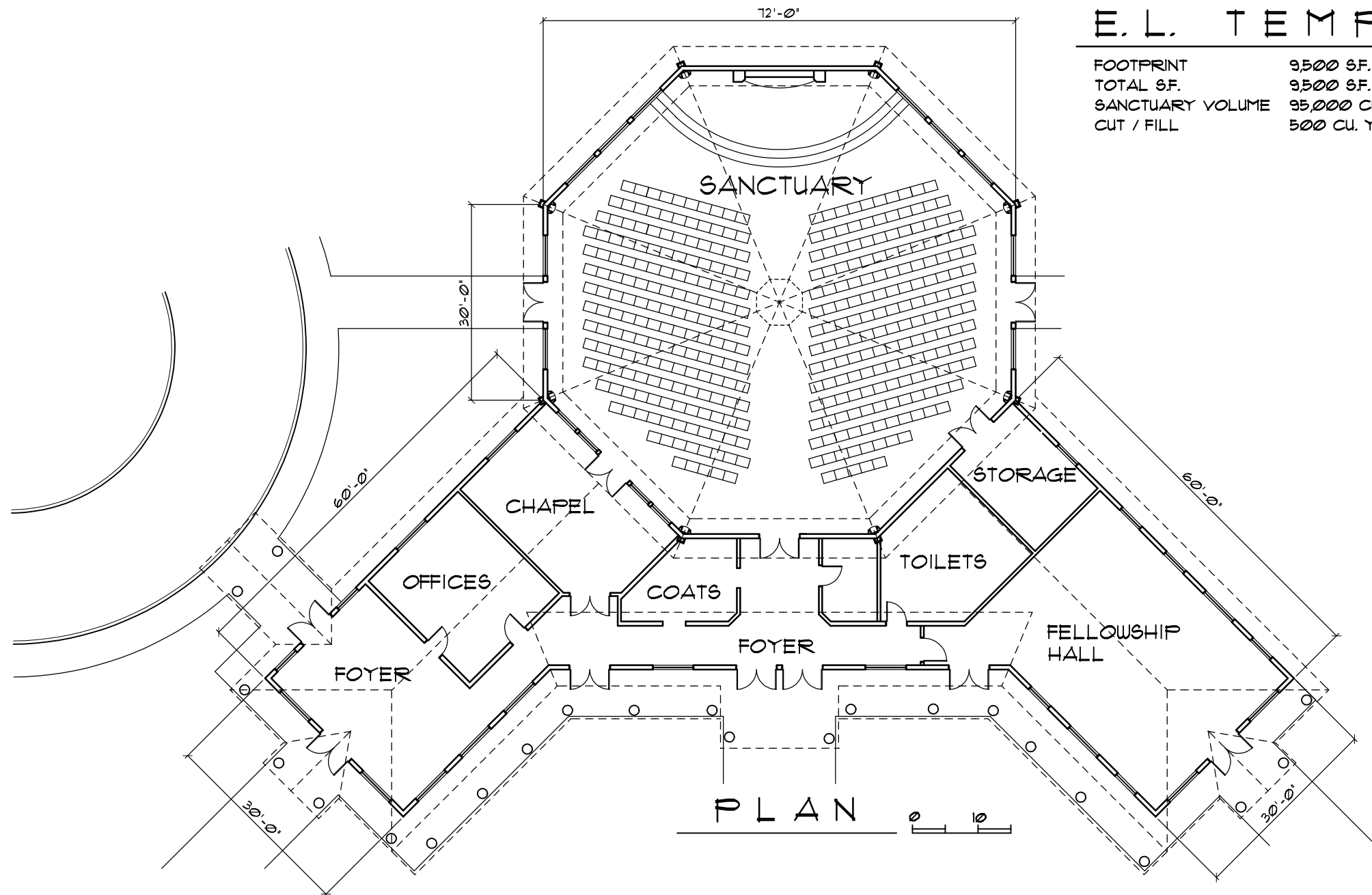


E. L. TEMPLE OF LIGHT

FOOTPRINT 9500 SF.
TOTAL SF. 9500 SF.
SANCTUARY VOLUME 95,000 CU. FT.
CUT / FILL 500 CU. YDS.

CONCEPTUAL DESIGN ONLY.
ALL FUTURE BUILDINGS TO COMPLY
WITH THE CODES AND ORDINANCES
OF NEVADA COUNTY, CALIFORNIA.

J.T. HEATER.....ARCHITECT
14618 TYLER FOOTE RD. NEVADA CITY, CA 95959
PHONE: 1-530-478-7740
JT@JTHEATER.COM



TEMPLE OF LIGHT ELEVATION

EXPANDING LIGHT TEMPLE OF LIGHT
ANANDA VILLAGE COMPREHENSIVE MASTER PLAN UPDATE
14618 TYLER FOOTE ROAD NEVADA CITY, CA 95959
JANUARY 2015

DATE: JAN 2015
SHEET 4 OF 5

UPA-1

E.L. TEMPLE
OF LIGHT