

ENGINEER'S QUANTITIES (NOT FOR BID):

EXISTING CONCRETE REMOVAL:
 4" THICK
 AREA = 6,437 SF
 APPROX. VOLUME = 3,425 CU. FT. = 126 CY
 EXISTING 4,000 PSI CONCRETE = 20 CY
TOTAL = 98 CY

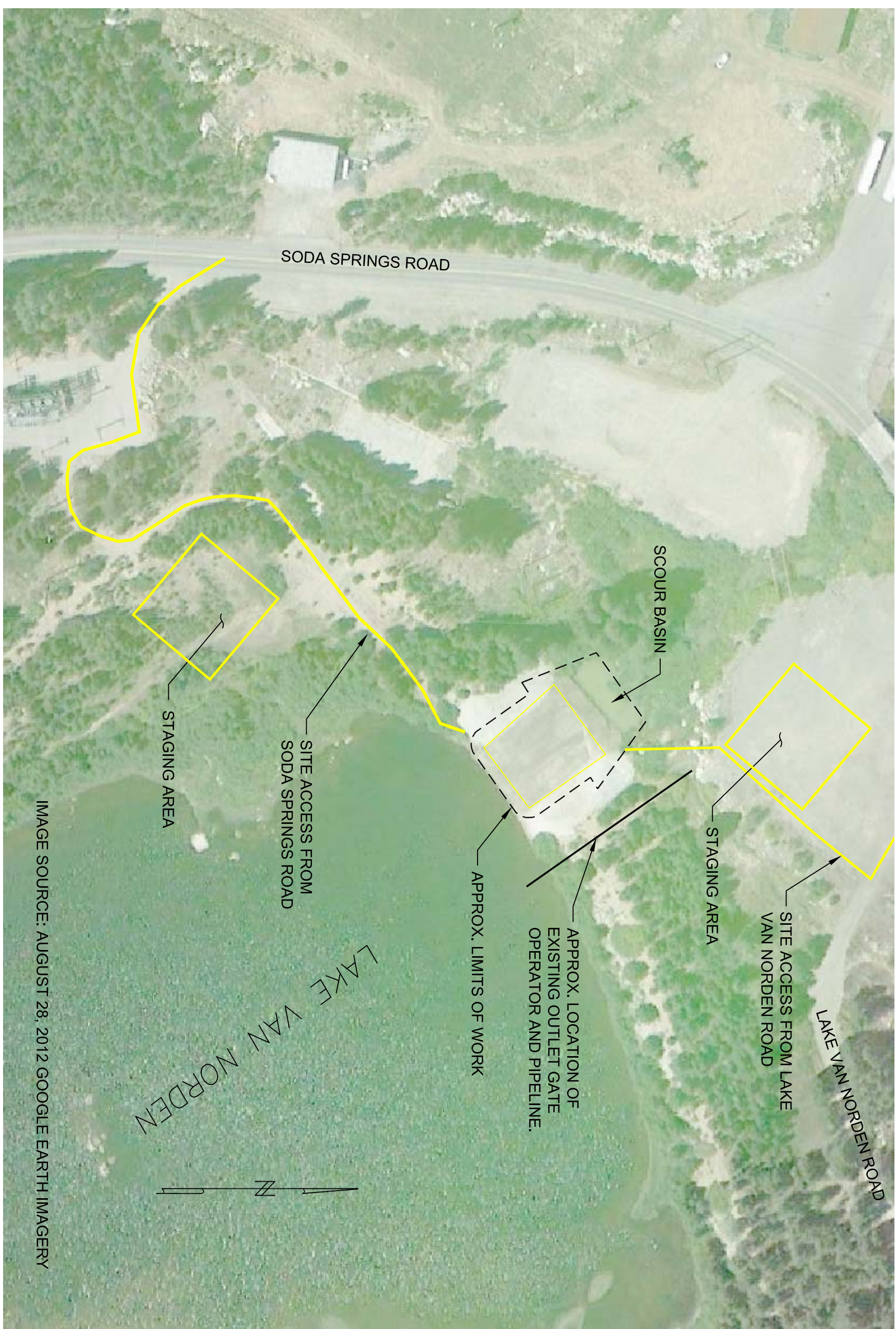
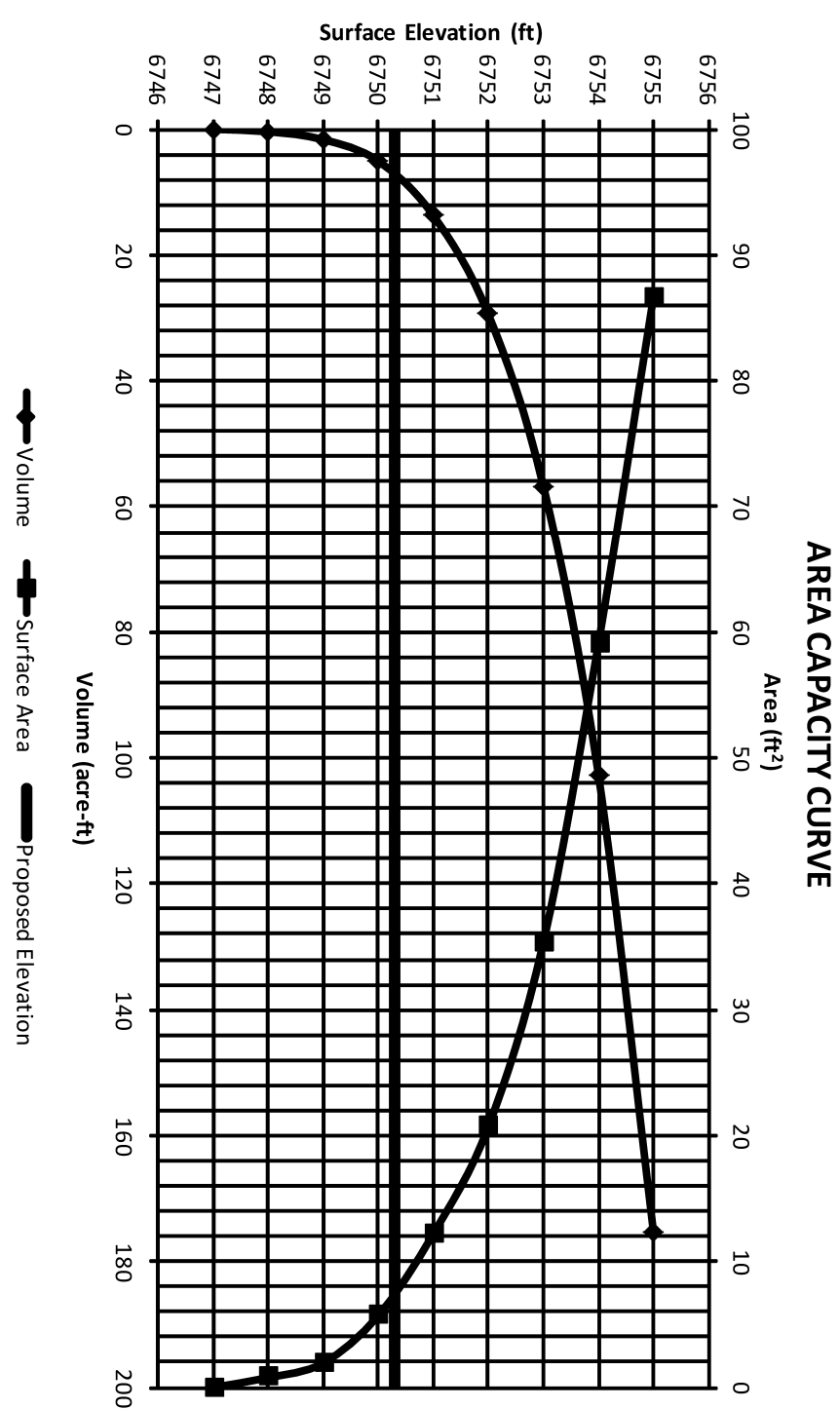
SPOIL:
 V1 (BOTTOM):
 APPROX. AREA = 95.4 FT X 48 FT = 4,579 SF
 EXCAVATION DEPTH = 4.5 FT.
 V1 = 20,606 CU. FT. = 783 CY

V2 (2xSIDE SLOPES):
 APPROX. AREA = 2 X 24.6 SF = 49.2 SF
 LENGTH = 95.4 FT
 V2 = 4,693 CU. FT. = 174 CY

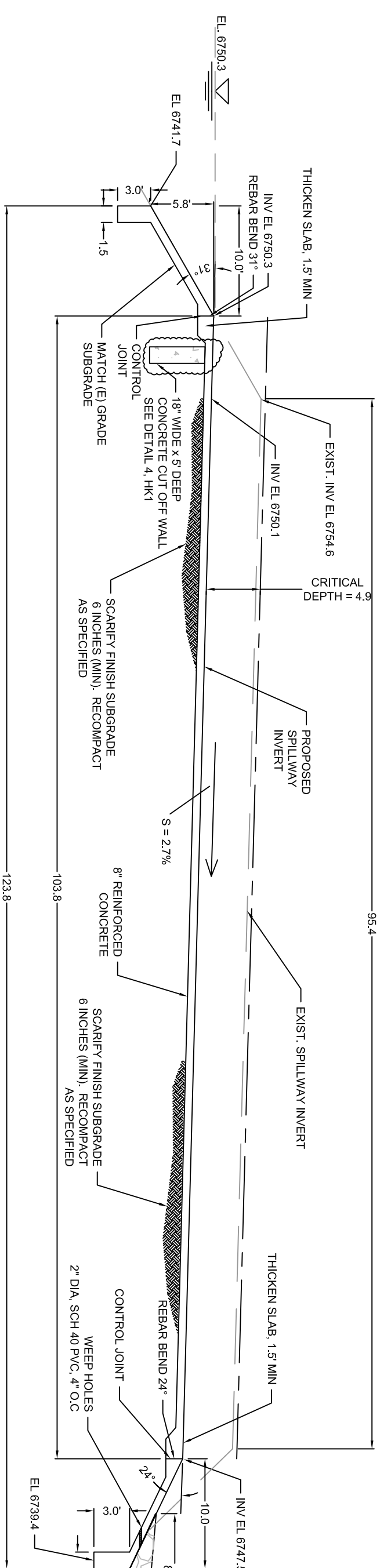
V3 (2xAPPROX):
 APPROX. AREA = 17 SF + 15.7 SF = 32.7 SF
 LENGTH = 48 FT
 V3 = 1,570 CU. FT. = 58 CY
TOTAL SPOIL VOLUME = 995 CY

CONCRETE:
 2 X APPROX: 2(11.5 FT. X 48 FT. X .67 FT. THICK) + 2(1.5 FT. X 3 FT. X 48 FT.) = 1,172 CU. FT.
 2 X SIDE SLOPES: 2(11 FT. X 103.8 FT. X 0.67 FT. THICK) = 1,530 CU. FT.
 BOTTOM: 4,944 SQ. FT. X 0.67" THICK = 3,312 CU. FT.
TOTAL = 6014 CU. FT. = 223 CY

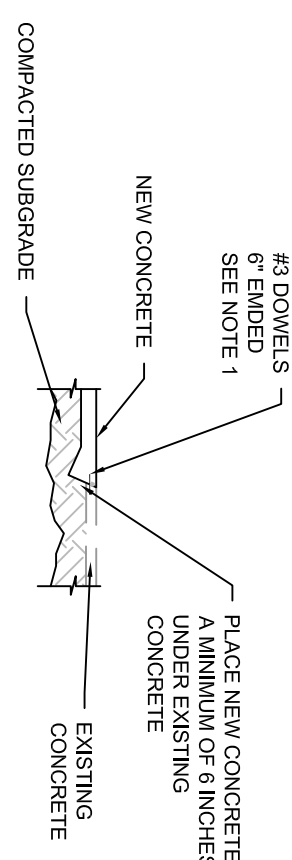
RIPRAP:
 2,915 SF(3.5') = 10,202 CU. FT. = 377 CY
 ASSUME 160 PCF
 (10,207 CU. FT. X 160 PCF)/2000 LB = **816 TONS TOTAL**



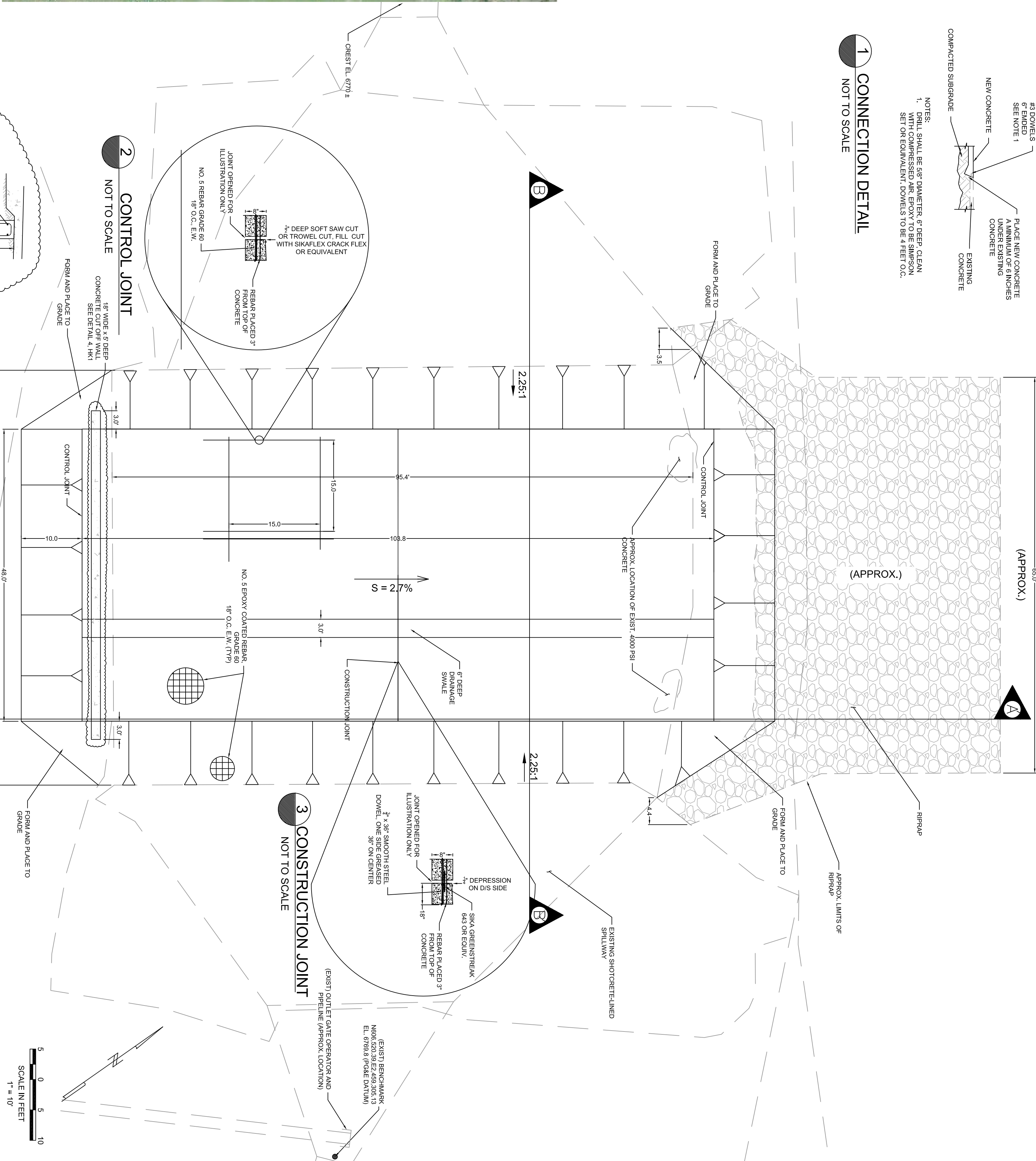
SITE ACCESS AND STAGING
 NOT TO SCALE



A PROFILE
 SCALE: 1" = 10'-0"

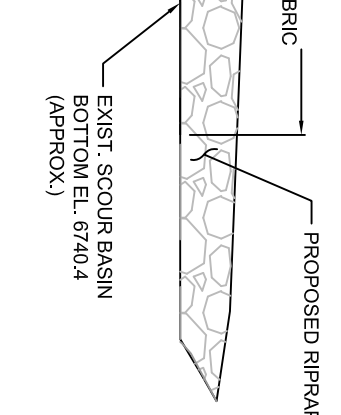


1 CONNECTION DETAIL
 NOT TO SCALE

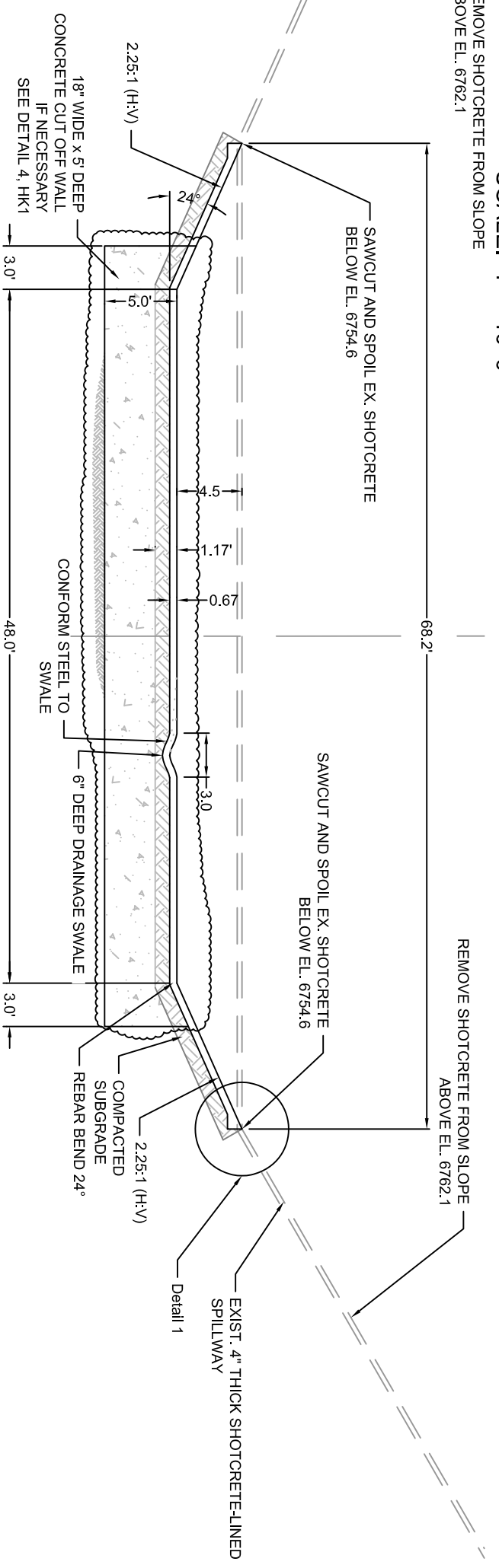


2 CONTROL JOINT
 NOT TO SCALE

4 CUT OFF WALL COLLAR
 SCALE: 1" = 5'-0"



B CROSS SECTION
 SCALE: 1" = 10'-0"



NO.	REVISIONS	DATE	DESIGNED BY:	CRK
1	CONCRETE COLLAR	02/05/16	DRAWN BY:	HJC/MED
2	SHOTCRETE REMOVAL	02/18/16	DATE:	FEBRUARY 2016
			DRAWING NAME:	SPILLWAY DESIGN
			PROJECT No.:	4003A-01