

**NEVADA COUNTY
TAHOE/TRUCKEE NEEDS
ASSESSMENT OVERVIEW**

**OCT 25,
2019**

NEVADA COUNTY NEEDS ASSESSMENT OVERVIEW

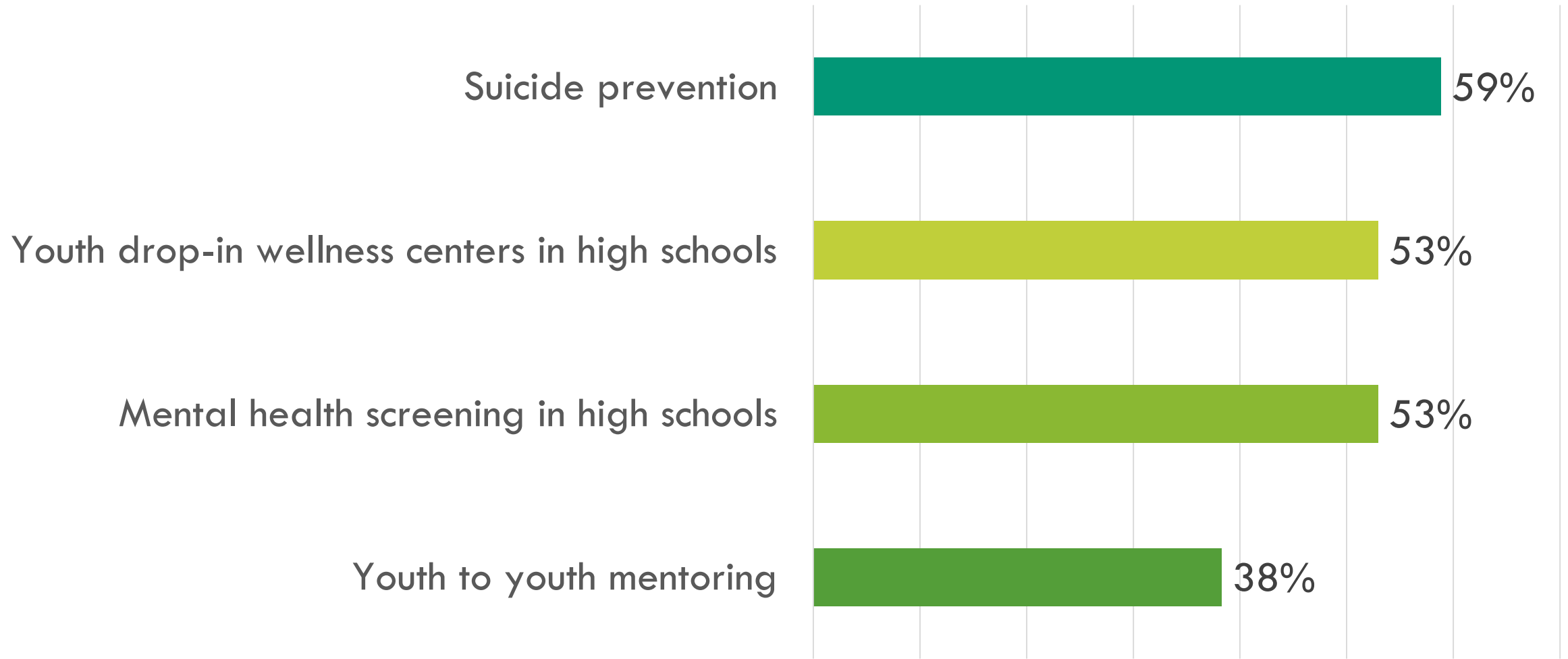
- ❖ Mental Health Needs Assessment Survey:
 - 428 total survey responses, 34 responses who identified living in Truckee (9%)
 - 29% identified as mental health consumer/client
 - 27% identified as family member of mental health consumer/client
 - 7% identified as Hispanic or Latino

NEVADA COUNTY NEEDS ASSESSMENT OVERVIEW

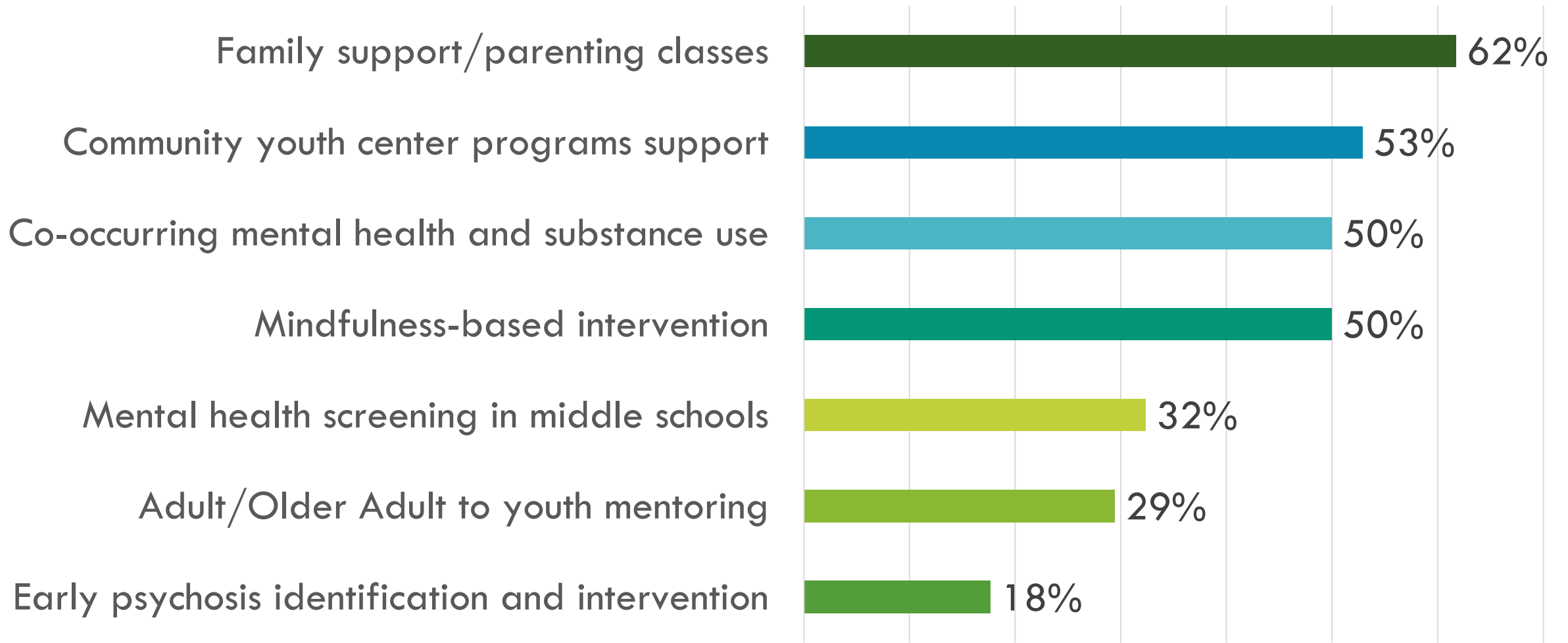
- ❖ Focus Groups and Key Informant Interviews:
 - Conducted 10 focus groups and key informant interviews
 - Tahoe/Truckee focus group of 13 participants comprising of providers and stakeholders
 - Upcoming Promotoras focus group to specifically gather input from Latino community in Tahoe/Truckee
- ❖ Input from today's meeting

**KEY SURVEY RESULTS (TAHOE/TRUCKEE
RESPONSES ONLY)**

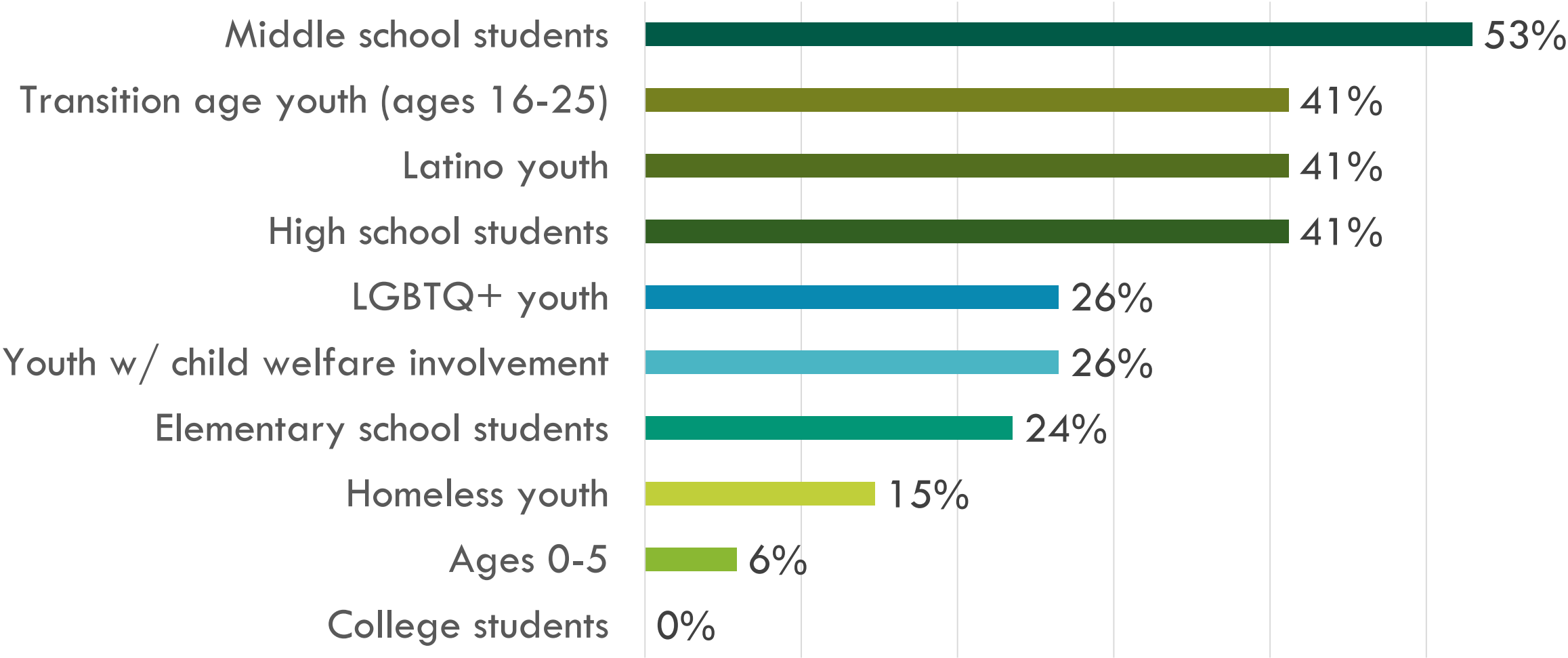
Existing PEI Services for Children/Youth



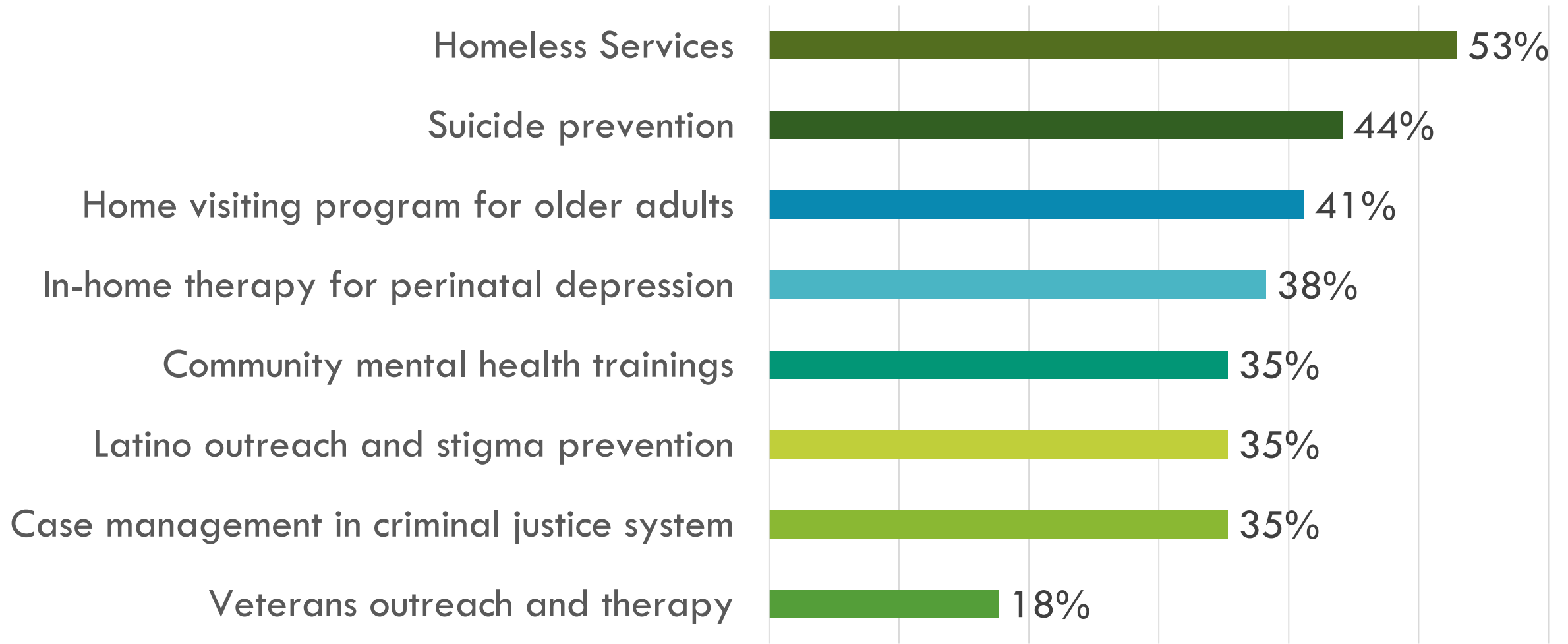
Additional PEI Services for Children/Youth



Youth Populations in Need of PEI Services



Adult Populations in Need of PEI Services



KEY TAHOE/TRUCKEE FOCUS GROUP FINDINGS

WHAT'S WORKING WELL:

- ❖ Bilingual therapist at NCBH
- ❖ School-based services such as wellness center
- ❖ Relationship with Truckee PD
- ❖ Great collaboration and communication across partners
- ❖ Flexible and responsive programs

GAPS IN TAHOE/TRUCKEE:

- ❖ Psychiatric services in the region
- ❖ Full Service Partnership/Intensive Services for adults and youth, including supportive housing
- ❖ Pre-crisis services like respite center
- ❖ Limited resources and transportation
- ❖ 0-5 and TAY services
- ❖ Not enough bilingual providers

NEXT STEPS |

PEI – CURRENT NEVADA COUNTY TAHOE/TRUCKEE DISTRIBUTION

Program	Current Annual Funding	Percent of Total
Homeless Outreach, Case Management, and Therapy	\$194,198	16%
Tahoe/Truckee-Specific Programs	\$154,988	13%
Homeless Outreach	\$23,363	2%
Suicide Prevention	\$25,000	2%
Latino Outreach	\$28,875	2%
High School Wellness Center	\$57,750	5%
Second Step	\$20,000	2%
PEI Administration	\$124,583	11%
High School Depression/Suicide Screening	\$111,458	9%
Suicide Prevention & Postvention	\$108,000	9%
Criminal Justice Case Management	\$81,500	7%
Senior Outreach	\$78,600	7%
PEI Evaluation	\$60,000	5%
Children's Early Intervention	\$50,000	4%
Bilingual Therapy	\$50,000	4%
Latino Outreach	\$46,200	4%
Perinatal Depression Program	\$30,000	3%
Mental Health First Aid Training	\$25,000	2%
Youth Mentoring/Youth Programs	\$21,630	2%
Veterans' Outreach	\$20,000	2%
Resource Hub (2-1-1)	\$18,565	2%
LGBTQ+ Support	\$10,000	1%
Total	\$1,184,722	

THANKS!



Priya Kannall

Mental Health Services Act (MHSA) Coordinator, Nevada County

Priya.Kannall@co.nevada.ca.us

(530) 265-1790