



# COUNTY OF NEVADA COMMUNITY DEVELOPMENT AGENCY

Building Department

950 MAIDU AVENUE, SUITE 170, NEVADA CITY, CA 95959-8617  
(530) 265-1222 FAX (530) 265-8794 <http://mynevadacounty.com>

Craig Griesbach, Building Director

## METAL ROOF REQUIREMENTS

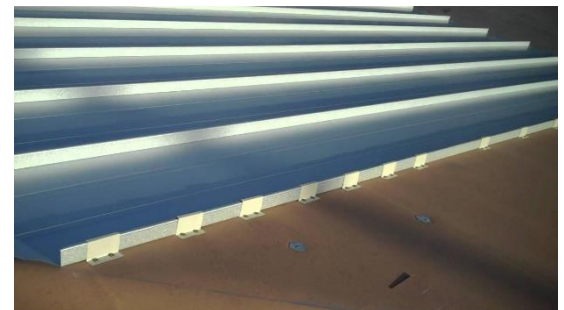


**In Nevada County, all roofing assemblies must meet Class A fire rating and listing requirements due to the local high fire severity zones. In the case of a metal roof installation, this can be documented in three ways:**

1. Select a Class A fire-rated roof assembly from the attached Metal Sales ESR report (ESR-2385) as shown on the back of this handout. Metal Sales distributes the majority of metal roof panels in the area.
2. Submit an ESR report for a specific metal roofing product showing compliance with Class A listing standards.
3. Use of Polystick XFR underlayment over a combustible deck with a minimum 26 gauge listed metal panel.

**The assembly underlayment and roofing product will be included in the permit description and confirmed during the inspection process.**

**It is important to provide a method of confirming the specific roofing materials at the time of inspection. Confirmation of the specific roofing materials can be achieved by providing either the specification sheets for the materials or the purchasing invoice for the materials.**



**In the case of new construction, the same information is required as part of the plan submittal and during the inspection process.**

Please contact the Nevada County Building Department with any questions regarding this policy at 530-265-1222, select option 1 or via email at [BuildingDept@co.nevada.ca.us](mailto:BuildingDept@co.nevada.ca.us).

TABLE 5—FIRE CLASSIFICATION ASSEMBLIES

ROOF CLASS	SUBSTRATE <sup>1</sup>	MAX. ROOF SLOPE	ASSEMBLY DETAIL <sup>2</sup>	
A	Noncombustible	Unlimited	Panels:	20, 22, & 24 gauge, 16" Magna-Loc 20, 22, & 24 gauge, 18" Magna-Loc 22 & 24 gauge, 16" Magna-Loc 180 22 & 24 gauge, 18" Magna-Loc 180 22, 24 & 26 gauge, Clip-Loc 24 & 26 gauge, IC72-Panel (All panels are steel)
A	Combustible	Unlimited	Underlayment:	One Layer of VersaShield® Fire-Resistant Roof Deck Protection
			Panels:	24 gauge, 16" Magna-Loc 24 & 26 gauge, 16" Vertical Seam 24 gauge, 18" Vertical Seam 26 gauge, 16" Image II 26 gauge, 7/8" Corrugated 29 gauge, Classic Rib 26 gauge, 2.5" Corrugated 26 gauge, U-Panel/PBU Panel 26 gauge, R-Panel/PBR Panel (All panels are steel)
A	Combustible	Unlimited	Underlayment:	Two Layers of VersaShield® Fire-Resistant Roof Deck Protection
			Panels:	0.032" thick, 16" Vertical Seam 0.032" thick, 16" Image II 0.032" thick, Classic Rib (All panels are aluminum)
B	Combustible	Unlimited	Underlayment:	One Layer of VersaShield® Fire-Resistant Roof Deck Protection
			Panels:	0.032" thick, 16" Vertical Seam 0.032" thick, 16" Image II 0.032" thick, Classic Rib (All panels are aluminum)

<sup>1</sup>Wood deck must be a minimum of 15/32-inch-thick (11.9 mm) plywood.

<sup>2</sup>GAF's VersaShield® Fire-Resistant Roof Deck Protection is recognized in ICC-ES evaluation report ESR-2053 and must be installed in accordance with that report.