



# Nevada County 2021 Redistricting Process

July 29, 2021

# Redistricting Timeline Part I

<b>Date</b>	<b>Event</b>
February 9	Board of Supervisors selects and implements redistricting County Staff Advisory Commission
July 29	First Official workshop to receive public input on communities of interest and other community mapping priorities
August 12	Census Bureau releases 2020 Census data
August 24 (Truckee)	Second Official Board Hearing to receive public input on communities of interest and other community mapping priorities
Mid-late September	Official California Redistricting Data Released

# Redistricting Timeline Part II

Date	Event
October 22	Deadline for initial draft maps from the public for Nov. 9 presentation
November 9	Third Official Board Hearing on Redistricting
November 16	Fourth Official Board Hearing on Redistricting
December 14	Adopt Redistricting Ordinance
December 15	Statutory deadline to adopt map

# Redistricting Rules and Goals

## 1. Federal Laws

- Equal Population
- Federal Voting Rights Act
- No Racial Gerrymandering

## 2. California Criteria for Counties

1. **Geographically contiguous**
2. **Undivided neighborhoods and “communities of interest”**  
(Socio-economic geographic areas that should be kept together)
3. **Cities and CDP’s**
4. **Easily identifiable boundaries**
5. **Compact**  
(Do not bypass one group of people to get to a more distant group of people)

### Prohibited Considerations:

“Shall not favor or discriminate against a political party.”

## 3. Other Traditional Redistricting Principles

- Minimize voters shifted to different election years
- Respect voters’ choices / continuity in office
- Future population growth
- Preserving the core of existing districts



# Defining Neighborhoods

**1<sup>st</sup> Question: what is your neighborhood?**

**2<sup>nd</sup> Question: what are its geographic boundaries?**

**Examples of physical features defining a neighborhood boundary:**

- Natural neighborhood dividing lines, such as highway or major roads, rivers, canals and/or hills
- Areas around parks or schools
- Other neighborhood landmarks

**In the absence of public testimony, planning records and other similar documents may provide definition.**



# Beyond Neighborhoods: Defining Communities of Interest

## **1<sup>st</sup> Question: what defines your community?**

- Geographic Area, plus
- Shared issue or characteristic
  - Shared social or economic interest
  - Impacted by county policies
- Tell us “your community’s story”

## **2<sup>nd</sup> Question:**

**Would this community benefit from being “included within a single district for purposes of its effective and fair representation”?**

- Or would it benefit more from having multiple representatives?

Definitions of Communities of Interest may not include relationships with political parties, incumbents, or political candidates.

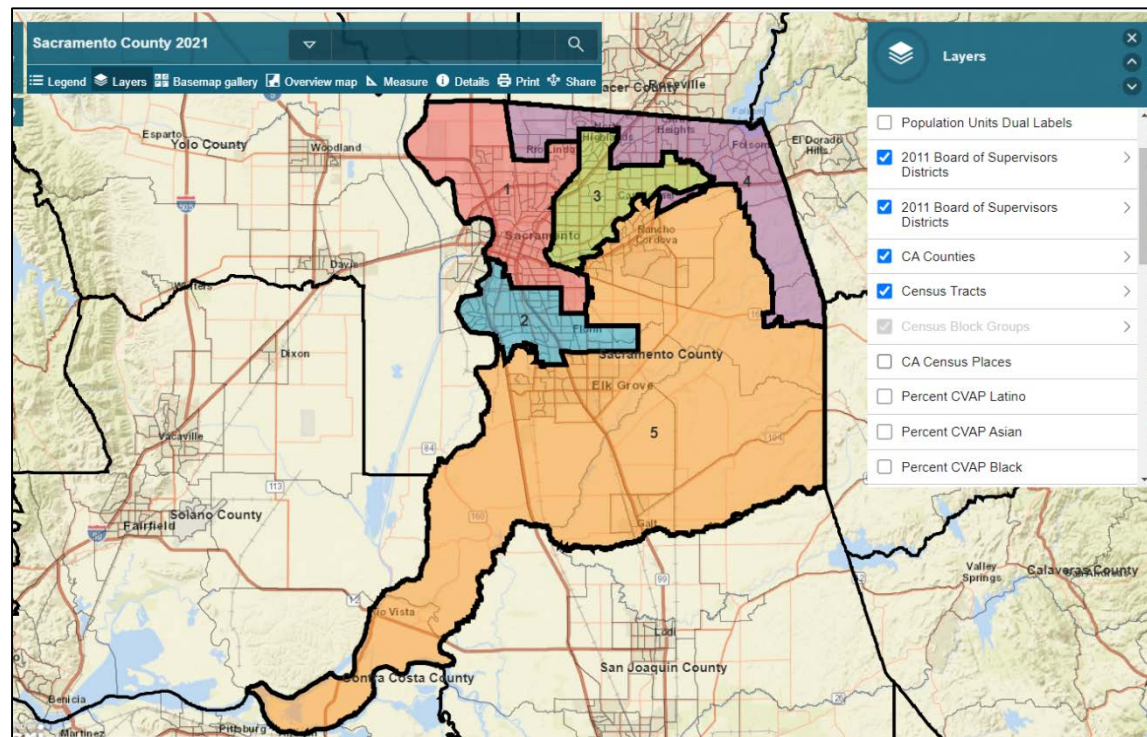
# Public Mapping and Map Review Tools

- **Different tools for different purposes**
- **Different tools for different levels of technical skill and interest**
  - Simple “review draft maps” tool
  - Easy-to-use “Draw your neighborhood” tool

# Simple Map Review Tool

## □ Online Interactive Review Map

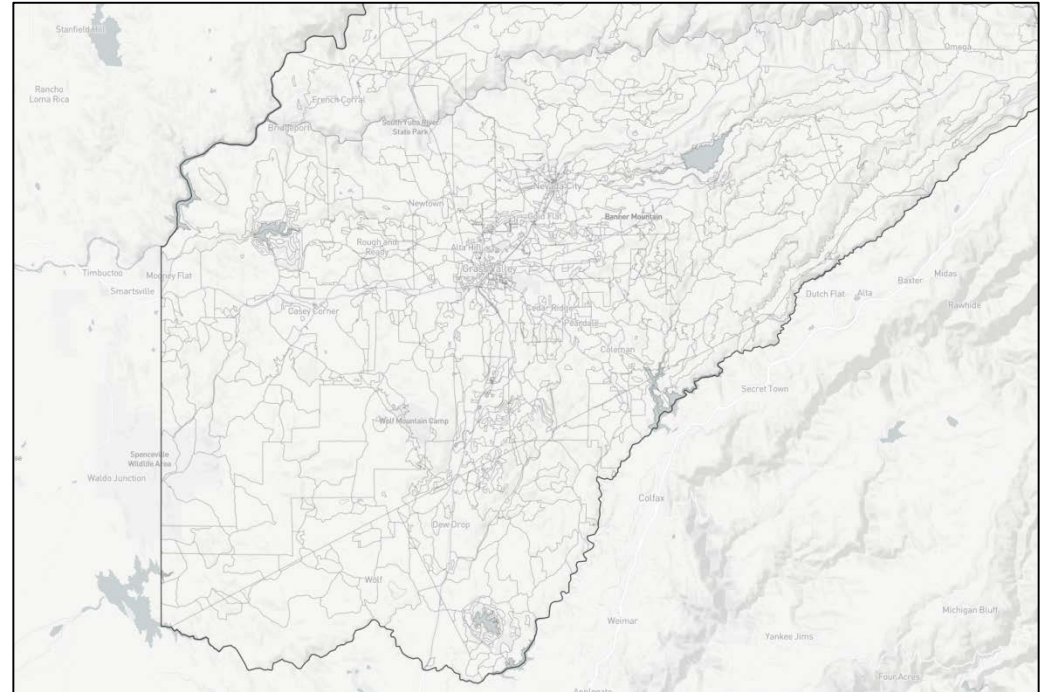
- ESRI's "ArcGIS Online" – similar to Google Maps in ease of use
- Used to review, analyze and compare maps, not to create them





# DistrictR

- **“Draw Your Community of Interest” focus**
  - ▣ Also includes simple district-mapping tool
  - ▣ <https://districtr.org/tag/NevadaCo>



# Share Your Thoughts

<https://mynevadacounty.com/3196/REDISTRICTING-2021>

For questions call: (530) 470-2540

Email: [redistricting@co.nevada.ca.us](mailto:redistricting@co.nevada.ca.us)