

# Redistricting Public Hearing

11/09/2021





# Process Review

## Today's Goal:

- **Public and Board input on current map scenarios**

## Next Steps:

- **Updated Map scenarios (2) posted by Nov. 11<sup>th</sup>**
- **Public Hearing on November 16<sup>th</sup>**
- **Final map creation, posted by December 9<sup>th</sup>**
- **Board map adoption December 14<sup>th</sup>**



# Top District Map Guidelines

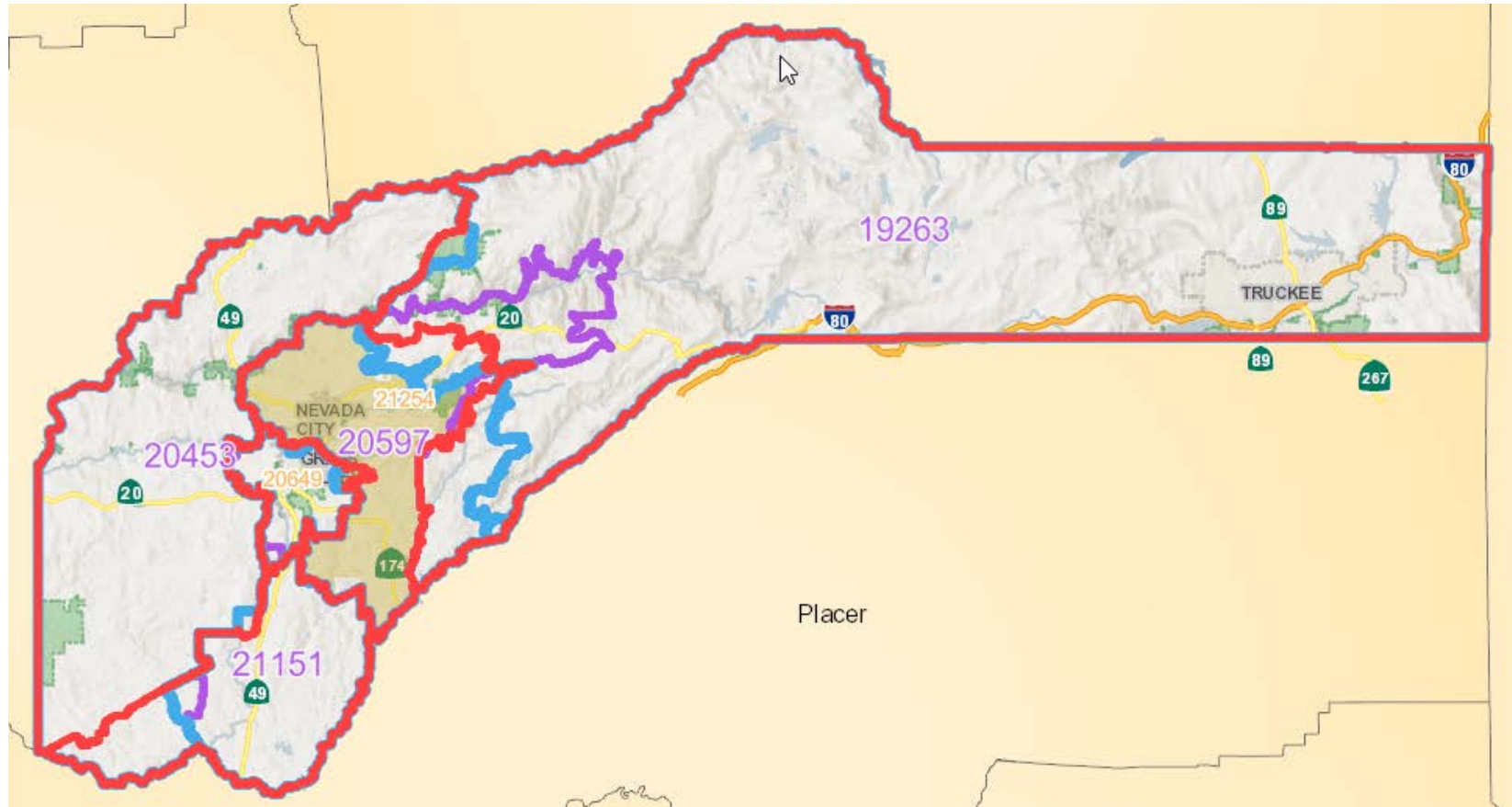
## 1. No more than 10% total deviation from lowest to highest population district.

- e.g. low district of -4% and high District of 3% would total to 7%
- Ideally no more than 2% deviation for a district
- 1% deviation = 205 residents in Nevada County

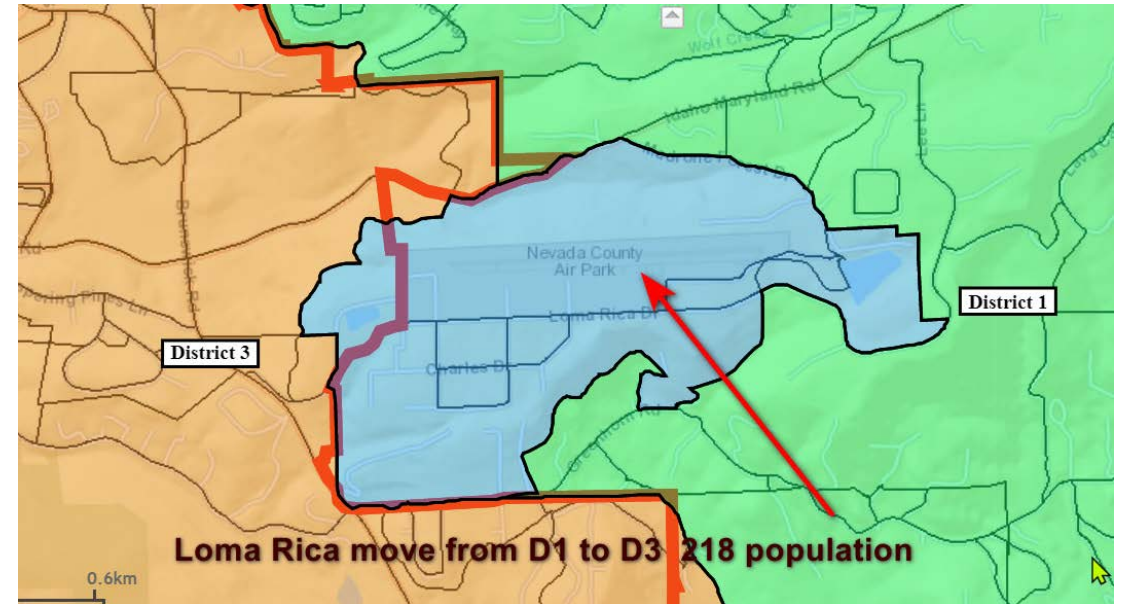
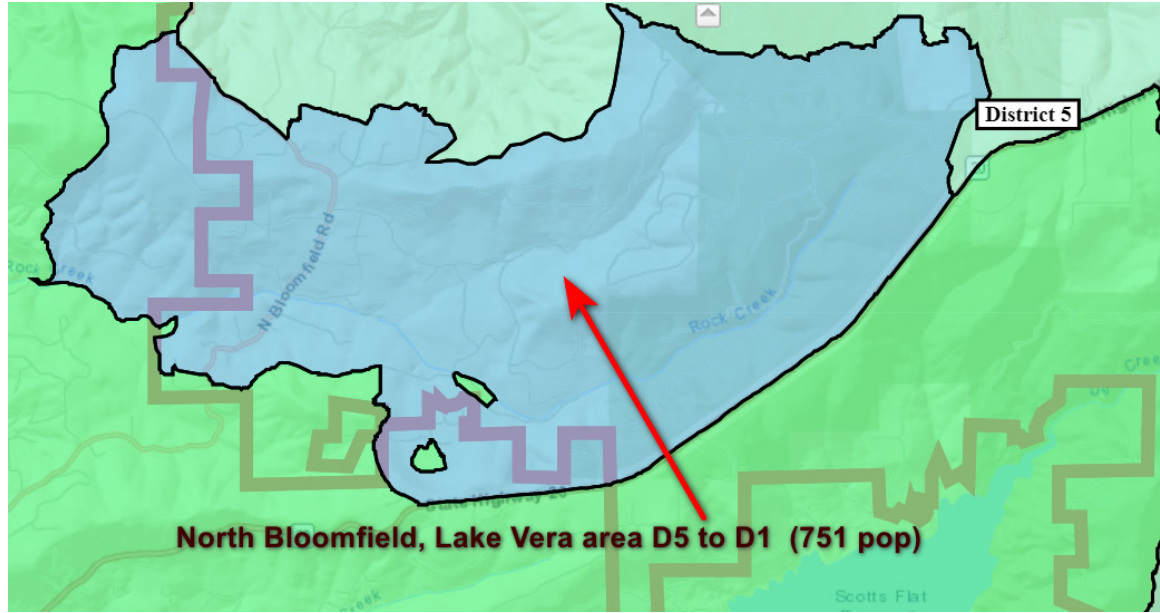
## 2. Keep Communities of Interests whole



# Draft Map Scenario Objectives



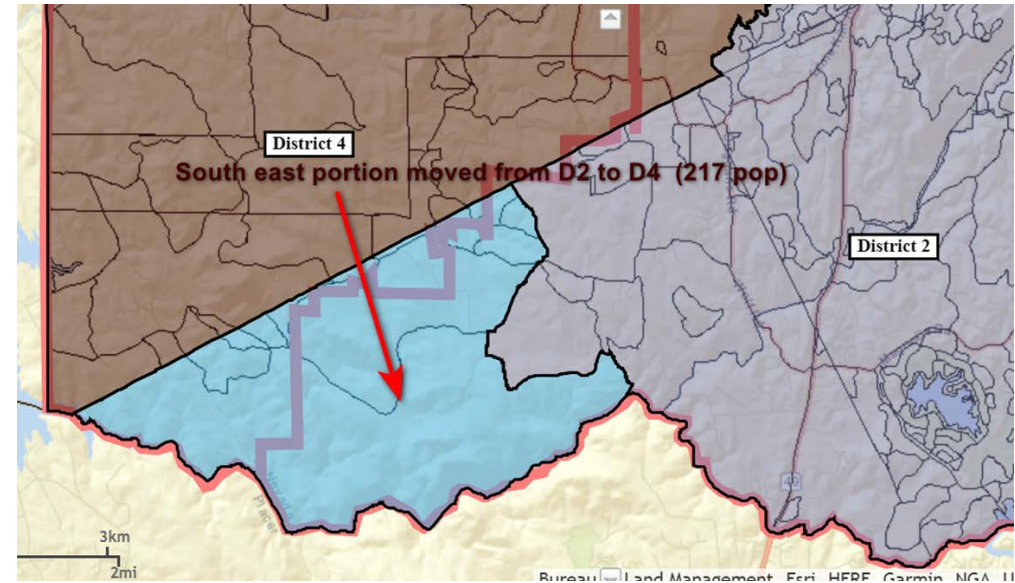
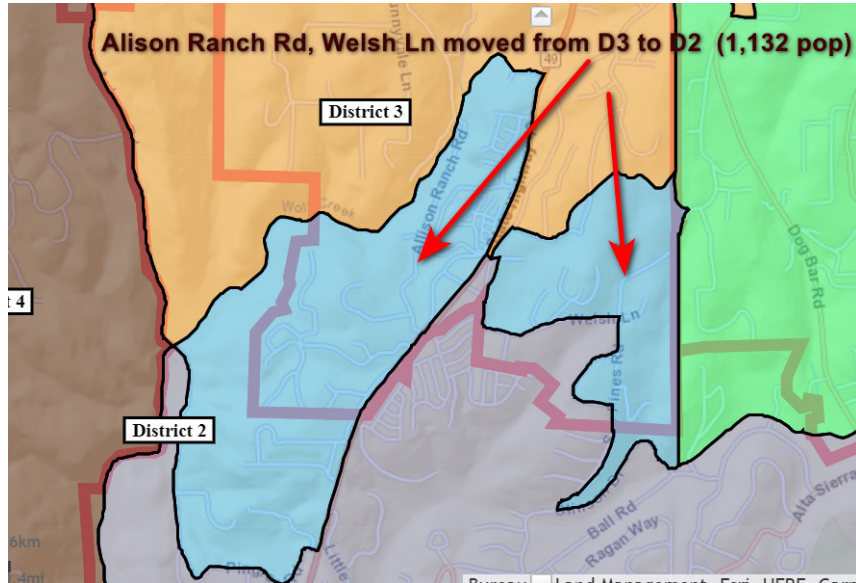
# North Bloomfield, Lake Vera – 751 population



# Loma Rica – 218 population



# Alison Ranch Rd, Welsh Ln 1,132 population



Southeast District 2 – 217 population



# Map Options Public Hearing

- **Option 1**
- **Option 2**
- **Option 3**
- **Option 4**



# Airport / Loma Rica







# Process Review

## Today's Goal:

- **Public and Board input on current map scenarios**

## Next Steps:

- **Updated Map scenarios (2) posted by Nov. 11<sup>th</sup>**
- **Public Hearing on November 16<sup>th</sup>**
- **Final map creation, posted by December 9<sup>th</sup>**
- **Board map adoption December 14<sup>th</sup>**

